



Installation Guide

This page is intentionally left blank.

*IBM Rational System Architect
and
IBM Rational System Architect XT
Installation Guide
Release 11.3.1.3*

Before using this information, read the “Notices” in the Appendix, on page 105.

This edition applies to IBM® Rational® System Architect®, version 11.3.1.3 and to all subsequent releases and modifications until otherwise indicated in new editions.

© Copyright IBM Corporation 1986, 2010

US Government Users Restricted Rights—Use, duplication or disclosure restricted by GSA ADP Schedule Contract with IBM Corp.

Table of Contents

Installing Rational System Architect	1
Introduction	1
Installation overview	2
Installation scenarios	2
License management	2
Enabling localized user interface	3
Upgrading and patches	3
System requirements for Rational System Architect	5
Operating system requirements	5
Additional products used or installed	6
Internet browsers	7
Hardware requirements	7
Installation prerequisites	7
Ports and protocols for SQL Server and Oracle	8
Rational System Architect installation scenarios	9
Installing Rational System Architect	10
Running the Rational System Architect Startup Wizard	10
I. Installations to SQL Server environments	12
Minimum Access Rights for SQL Server 2005, including SQL Express	12
Assigning 'sysadmin' permissions for SQL Server or SQL Express in Windows Vista	13
Connecting to SQL Server Express from a client machine	14
Install Rational System Architect to the local machine of each User	14
Have users begin work	14
II. Installations to SQL Express environments	16
Install Rational System Architect and SQL Express to network machine	16
Install Rational System Architect to each user's local machine	16
Have users begin work	16
III. Installations to Oracle environments	18
Make sure all Rational System Architect users have proper access rights to Oracle	18
Character Set for Oracle	19
Install Rational System Architect to the local machine of each User	20
Have users begin work	21
Roaming User Profiles	22
Upgrading to 11.3.1.2 and later	23
Modifying, repairing, or removing Rational System Architect	24
Summary of conversion instructions	24
Rational System Architect addon products	24

Installing Rational System Architect addon products	25
Installing Addon products with Command Line Interface.....	25
Silent installation overview.....	27
Silent installation requirements	27
Command line options	28
Custom silent installation	29
Command line for 11.3, 11.3.01, and 11.3.02 (no UI mode).....	30
Command line for 11.3.1.2 (no UI mode).....	30
Silent installation requirements for SA DOORS Integration	31
Rational System Architect Integrations.....	32

Installing Rational System Architect XT 33

Introduction	34
SA XT installation overview.....	35
Rational System Architect XT installation	35
Requirements for the Rational System Architect XT installer	37
System requirements for Rational System Architect XT.....	38
Operating system requirements	38
Internet browsers.....	38
Additional products used or installed	39
Hardware requirements.....	39
SA XT and SA integration	40
SA XT and SA Catalog Manager integration	40
Accessing encyclopedias with Rational System Architect XT.....	40
Server Roles and Permissions	41
License requirements for SA XT and SA XT Web Service.....	42
Automated Rational System Architect XT installation tasks.....	43
Preparing to install the Rational System Architect XT software.....	43
Checking that Internet Information Services is installed.....	44
Installing Rational System Architect XT.....	45
Verifying SA XT website properties in IIS.....	49
1 – Checking and configuring ASP.NET mapping.....	49
2 – Setting directory security manually	50
3 - Setting the default page for SA XT website manually.....	51
4 - Verifying that the .SVG MIME type is present.....	52
Editing the web.config file	53
IIS 6.0 only – set IIS to use NTLM authentication.....	53
Adding Oracle authentication for SA XT and SA XT Web Service.....	54
Folder permissions for the SA XT Domain Account	55

Rational System Architect temporary folders.....	55
Rational System Architect XT temporary folders.....	55
Folders and file(s) that require the Full Control permission.....	56
Granting Full Control to required folders manually.....	56
Testing the Rational System Architect XT website.....	57
Checking that SA XT starts on the IIS server.....	57
Adding DCOM Rights to Impersonation account and INTERACTIVE Group.....	58
Checking that SA XT can access encyclopedias on a server.....	59
Windows Desktop Heap allocation	60
Adding encrypted security to the Impersonation Account.....	62
1 - Updating the Windows registry	62
2 – Updating the web.config file	63
3 - Granting permission to the Aspnet_wp.exe process.....	63
Adding encrypted security to Oracle authentication.....	64
Encrypting Oracle Authentication with Machine-Level Key:.....	64
Decrypting Oracle Authentication with Machine-Level Key :	65
Registering the .NET Framework.....	66
Enabling Rational System Architect XT Web Service add-on product.....	68
Configuring the SA XT Web Service.....	68
Verifying the SA XT Web Service properties.....	69
Checking and configuring ASP.NET mapping.....	69
Setting directory security.....	69
Editing the SA XT Web Service web.config file.....	70
Checking folder permissions for the SA XT Web Service Domain Account	70
Testing the SA XT Web Service feature.....	71
Accessing Help for Rational System Architect XT and the Web Service	71
Uninstalling Rational System Architect XT.....	72

Installing SA Catalog Manager 73

Introduction	73
Overview of Access Control with SA Catalog Manager	74
Enterprise Catalogs.....	74
Overall Steps for implementing Access Control via SA Catalog Manager.....	75
1 - Acquire a server dedicated to Rational System Architect Encyclopedias.....	76
Server Requirements.....	76
Important server recommendation	76
2 - Install Rational System Architect and SA Catalog Manager	77
A. Install Rational System Architect	77
B. Install SA Catalog Manager as part of Rational System Architect Install	77

Where to install SA Catalog Manager.....	77
Installing SA Catalog Manager	78
3 - Set up User rights to Encyclopedias.....	79
A. Set up User Rights to Encyclopedias for SQL Server	79
1. Grant Server Rights to create Encyclopedias (DBCcreator).....	80
2. Create a Catalog on a SQL Server	80
3. Grant Database Rights	81
Rights for 'SA User' Group	81
Rights for 'SA Admin' Group – Users who can create Encyclopedias	83
B. Set up User Rights to Encyclopedias for Oracle.....	85
1. Grant Access Rights for Oracle	85
2. Create a Catalog on the Oracle Server.....	86
4 - Grant 'SA Permissions' to Users within an Encyclopedia	86
Overall steps to create a Catalog and implement Access Control.....	86
A. Attach Encyclopedias to an Enterprise Catalog.....	87
B. Create new Users	88
C. Assign Users to Encyclopedias	88
D. Assign Roles to Users.....	89
E. Open Catalogued Encyclopedia in Rational System Architect	89

Installing Rational SA and SA XT on same machine 91

Introduction	91
Overview.....	91
Installation Requirements.....	92
Installing Rational System Architect XT over Rational System Architect	92
Running Rational System Architect when Rational System Architect XT is also installed	93
Uninstalling Rational System Architect XT	93

Installing the IBM Rational System Architect Cognos Bridge 95

Installation Overview	95
Operating System Requirements.....	95
Database supported.....	95
Hardware Requirement.....	96
Supported IBM Cognos packages.....	96
Installing IBM Rational System Architect Cognos Bridge	96
Silent Installation overview	97
Silent Installation requirement.....	97
Enabling localized User Interface	98
Known install and uninstall issues	98

IBM Support	101
Contacting IBM Rational Software Support.....	101
Prerequisites	101
Other information	102
Submitting Problems.....	102
Appendix	105
Notices	105
Trademarks.....	108
Index	109

This page intentionally left blank.

Installing Rational System Architect

1

Introduction

This chapter instructs you how to install IBM® Rational® System Architect® and related products. The chapter is partitioned into sections that cover different scenarios of installing the product.

- Installation overview
- Installation scenarios
- System requirements for Rational System Architect
- Hardware requirements
- Ports and Protocols Used for SQL Server
- Rational System Architect installation scenarios
- Installing Rational System Architect
- Roaming User Profiles
- Upgrading to 11.3.1.3 and later
- Summary of conversion instruction
- Rational System Architect addon products
- Silent installation overview
- Custom silent installation
- Rational System Architect integrations

Installation overview

IBM provides full Rational System Architect installations only. This means that you need to uninstall an old Rational System Architect version before you install a new Rational System Architect version. Periodically, service packs, patches, or hot fixes are made available on the IBM Rational support site (<http://www-01.ibm.com/software/awdtools/systemarchitect/support/>) that will update your existing version. You do not need to uninstall Rational System Architect when you install a service pack, patch or hot fix, unless otherwise instructed on the support site.

Installation scenarios

Rational System Architect 11.3.1.3 encyclopedias are created on Microsoft® SQL Server 2008, Microsoft® SQL Server Express 2008, Microsoft SQL Server 2005®, Microsoft SQL Server 2005 Express® (SQL Express), and Oracle® 10g Database. This creates a number of installation scenarios – a user may opt to use SQL Express, SQL Server 2008, SQL Server 2005, or Oracle 10g as their repository engines. Rational System Architect’s Startup wizard enables you to install SQL Express onto your machine.

License management

Rational System Architect uses Macrovision FLEXNET™ licensing system. FLEXnet licenses are available as node-locked (stand-alone) licenses, which are tied to a specific machine, and floating (server) licenses, which are available anywhere on the network.

The FLEXnet licensing program must be running at all times Rational System Architect is running. FLEXnet retrieves the number of licenses to provide from the license.dat file. When FLEXnet runs, it reads the License.dat in a directory on the network or, for stand-alone machines, in a directory on the local machine. The licenses are distributed to SA users – Rational System Architect queries License.dat and runs when it finds an available license slot.

For more information on FLEXnet Licensing, see “IBM Rational Lifecycle Solutions Licensing Guide,” available in the IBM Rational support site (<http://www-01.ibm.com/software/awdtools/systemarchitect/support/>).

Enabling localized user interface

You can enable the Rational System Architect user interface to German, Japanese, French, or Spanish, as follows:

1. Open the **sa2001.ini** file, installed by default to C:\Documents and Settings\<<UserName>\Local Settings\Application Data\Telelogic\System Architect.
2. Add the following entry at the top of the file:

```
[SystemArchitect]
Locale=XXX
```

Values for XXX can be:

409 = English (This is the default.)

407 = German

411 = Japanese (This is set automatically if you use the Japanese installation files.)

40C = French

C0A = Spanish

Note: "0" is a zero not the letter "O".

3. Save and close the **sa2001.ini** file, and restart Rational System Architect.

Upgrading and patches

Upgrading Rational System Architect requires that you uninstall your older version before installing a new version. Files in the root application folder, in subfolders, or the folders of related products that you may have customized could be deleted permanently when you upgrade. Uninstalling a version clears and overwrites the application folder. Consequently, customizable files such as `usrmtx.xml` (for user-defined matrices), `usrprops.txt` (copied into newly created encyclopedias), and macro files (for VBA customizations) could be deleted when you install an upgrade or a patch.

You should also know the following about upgrading Rational System Architect:

- Before uninstalling older versions, a good practice is to backup any files that you customized in the application folder or other folders. After upgrading to the new version, you can copy your customized files back to their respective folders and retain your customizations.
- Encyclopedias created with V11.0 or newer are upgraded automatically, with options

to retain some customizations (for example, those in the USRPROPS.TXT file).

- Encyclopedias created with V10.0 or earlier need to be converted to the version 11.0 format before they can be opened in newer versions. This is done with the Rational System Architect Encyclopedia Manager tool.

See the 'Rational System Architect Conversion Guide' in the Information Center (<http://publib.boulder.ibm.com/infocenter/rsdp/v1r0m0/index.jsp>) or in your installation package.

System requirements for Rational System Architect

This section contains Rational System Architect software and hardware requirements.

Operating system requirements

Rational System Architect uses some of the newest Microsoft® Windows® features, included in the latest Service Packs and upgrades that Microsoft provides. You can install Rational System Architect on the client and server operating systems, or Terminal Server environments listed below.

Client operating systems

- Microsoft Windows 7 (32-bit and 64-bit) Professional, Ultimate and Enterprise editions
- Microsoft Windows Vista (32-bit and 64-bit) Ultimate, Enterprise, and Business editions
Note: Installing on this platform requires that you disable User Access Control for the Microsoft .Net Framework to be installed. Rational System Architect cannot be installed if the UAC is enabled.
- Microsoft Windows XP Professional (32-bit)

Server operating systems

- Microsoft Windows Server 2008 (32-bit and 64-bit) Standard, Enterprise and Datacenter editions
Note: Installing on this platform requires that you disable User Access Control for the Microsoft .Net Framework to be installed. Rational System Architect cannot be installed if the UAC is enabled.
- Microsoft Windows Server 2008 R2 (64-bit) Standard, Enterprise and Datacenter editions
- Microsoft Windows Server 2003 (32-bit and 64-bit) Standard, Enterprise and Datacenter editions
- Microsoft Windows Server 2003 R2 (32-bit and 64-bit) Standard, Enterprise and Datacenter editions

Terminal Server environments

A Terminal Server is an underlying platform. Rational System Architect is supported when installed directly on a Terminal Server or when installed on server products that run on Terminal Server, such as Citrix® or VMWare®.

- **Terminal Server:**
 - Microsoft Windows Server 2003 (Standard and Enterprise editions)
- **Citrix Metaframe Presentation Server 4.0 and Citrix Presentation Server 4.5 (Advanced edition):**
 - Microsoft Windows Server 2008
 - Microsoft Windows Server 2003 (Standard and Enterprise editions)
- **VMWare ESX Server 4.5:**
 - ALP Strategic Windows Client and Server Platforms

Additional products used or installed

Rational System Architect uses or installs the following software:

- Microsoft MSI 3.1
- MDAC 2.7 (with SP 1)
- Microsoft XML Parser 3.0 (with SP 7)
- Microsoft VBA 6.3
- Microsoft .Net Framework 3.5 (also installs 2.0). if it is not already installed
- Rational System Architect is based in part on software from Colosseum Builders, Inc.
- International Proofreader™ English (US and UK) text proofing system © 2003 by Vantage Technology Holdings, Inc. For full copyright information, see the 'Rational System Architect User Guide,' available in the Information Center (<http://publib.boulder.ibm.com/infocenter/rsdp/v1r0m0/index.jsp>) and your installation package.
- Java™ Runtime Environment 1.5 or higher.
- IBM Java Runtime Environment 5 or 6.

Internet browsers

Tools in the Rational System Architect suite (SA Publisher, SA Compare, and HTML Reports) generate web pages from the database repositories. To view those web pages, the following internet browsers are supported:

- Microsoft Internet Explorer 6.0, and 7.0
- Mozilla® Firefox® 3.0 and 3.5.9

Hardware requirements

The hardware requirements are as follows:

- Pentium-class PC, 2 GHz or higher, minimum of 1 GB of RAM, Super VGA monitor (with the screen resolution set to at least 800 x 600, small fonts setting).
- Disk space: 3.5 GB during installation and 300 MB after the install is complete.

Installation prerequisites

Rational System Architect requires that certain products be already installed on a machine before the actual installation of Rational System Architect can begin. If the prerequisites are already installed on the computer, then Rational System Architect is installed. However, if one or more prerequisites are not installed, then those that are missing are listed in a dialog, and you can click 'Install' to proceed. If they cannot be installed, the installation of Rational System Architect cannot proceed.

Rational System Architect (and the Rational System Architect DOORS Integration addon) also requires that the Microsoft Windows Installer 3.1 Service be installed on the operating system of the target computer. If it is not present, the installation cannot complete and you are notified how to obtain and install the Windows Installer 3.1.

Note: You must have administrative privileges on the system to install Rational System Architect (during the installation only).

Rational System Architect installs the following requisite products if they are not already installed on your computer:

- Microsoft Visual J# 2.0 Redistributable Package
- Microsoft SQL Server 2005 Backward Compatibility
- Microsoft Oracle .NET Data Provider
- Microsoft Primary Interoperability Assemblies 2005

Note: If Rational System Architect installs the components above, they will not be uninstalled if subsequently, you uninstall Rational System Architect. You can remove them through the Windows Control Panel.

Ports and protocols for SQL Server and Oracle

The following ports and protocols have been tested with Rational System Architect:

- SQL Server is a Winsock application that communicates over TCP/IP using the sockets network library. SQL Server listens for incoming connections on a particular port; the default port for SQL Server is 1433. The port does not need to be 1433, but 1433 is the official Internet Assigned Number Authority (IANA) socket number for SQL Server.

For more information, go to: <http://support.microsoft.com/kb/287932/>

Note: You can also use the Named Pipes protocol, but the default is TCP/IP.

- Oracle is tested with the TCP protocol, with the standard port 1521. The test configuration is done with Oracle configuration tools, which generated the TNSNAMES.ORA file.

Rational System Architect installation scenarios

This section describes installation types available for Rational System Architect.

Multi-User Installations: Rational System Architect is installed to every client machine. You can install SQL Express to every client machine. (Users do not need a local instance of SQL Express if they are always going to use an encyclopedia on the network; it is only necessary for users who will work on an encyclopedia off-line on their local machine.). FLEXnet is not installed to client machines – it is installed to a machine always running on the network. Encyclopedias are created on a SQL Server and Oracle servers on the network.

Stand-Alone Installations: To run Rational System Architect from a stand-alone machine (not connected to the network), you must also have FLEXnet running, providing you with the necessary Rational System Architect license. When using Rational System Architect on a stand-alone machine, you work on encyclopedias on a local instance of SQL Express. Rational System Architect's Startup Wizard provides you with the ability to install SQL Express to a machine.

You cannot run Rational System Architect without a valid license. The installation wizard prompts you for a directory or server where the License.dat file is located. Your System Administrator should provide the directory or the server where the license is being administered.

Installing Rational System Architect

Before installing Rational System Architect, you should close other applications that are running.

During installation of Rational System Architect, you may also optionally install **SQL Server 2005 Express** (SQL Express) and **Rational System Architect Encyclopedia Manager** (SAEM). These choices are provided in Rational System Architect's Startup Wizard.

To install Rational System Architect proceed as follows:

1. Install Rational System Architect as follows:
 - If you **downloaded** the software from the IBM Rational website, double-click on the executable file you downloaded to run the installation wizard.
 - If you received an **installation DVD** from IBM, insert it to your DVD-drive. Click on the **Install** in the auto-run interface to start the installation wizard.
2. In the **Welcome** screen, click **Next** to begin the installation.
3. Follow the instructions provided in the Installation Wizard.

IMPORTANT: During the course of an installation, you may be prompted to restart Windows to complete the installation. If so, you have to restart Windows for the installation to resume and complete. When you restart Windows Vista, the Rational System Architect installation resumes automatically. However, when you restart Windows XP or Windows Server 2003, you also have to restart the Rational System Architect installation manually for it to resume and complete.

Running the Rational System Architect Startup Wizard

The Installation Wizard automates the process of setting up your encyclopedia servers, installing sample encyclopedias, default frameworks, and other start-up options that make it easy for you to start using Rational System Architect. If you are evaluating Rational System Architect, you should use the Startup Wizard to install SQL Express. This creates a local server on your computer only which you can install and create encyclopedias.

On computers where Rational System Architect has not been installed before, the first time that you run Rational System Architect, the Startup Wizard is launched automatically. You can also run it manually as follows:

1. Launch Rational System Architect by selecting **Start, Program, IBM Rational, IBM Rational System Architect**. You can also click the Rational System Architect icon on your Desktop (if you allowed one to be created).
2. Click **Help**, and select Startup Wizard.
3. Follow the **Startup Wizard** screens. If you are evaluating the software, you should accept the default settings and click Next to navigate through the screens.
4. Configure where encyclopedias will be stored: This screen provides you with the option to install SQL Server 2005 Express (SQL Express) to your local machine. You should choose this default setting if you are evaluating the software.
5. Configure Samples Encyclopedia Projects: This screen enables you to select one or all of the example encyclopedias provided with Rational System Architect to be attached to your local server (SQL Express installed above). You may also select which Tutorial you wish to have opened when you first start-up Rational System Architect.

After you have navigated all of the Startup Wizard's screens, Rational System Architect will be ready to use. If you selected a tutorial encyclopedia, it will be opened for you when start Rational System Architect.

I. Installations to SQL Server environments

Make sure all Rational System Architect users have proper access rights to SQL Server. Use SQL Server's Enterprise Manager tool to provide users with proper access rights to SQL Server 2008 and SQL Server 2005 on the network.

Access Rights for SQL Server 2005:

- **Server Role:** For users to be able to create an encyclopedia on a SQL Server 2005 server, they must have either a Server Role of System Administrator or Creators. This is granted to the user by the System Administrator through SQL Server Enterprise Manager 2005.
- **Database Access:** For users to be able to open an encyclopedia and read and create definitions within it, they must have Database Access of db_datareader, and db_datawriter. The db_ddladmin is required when there is a change in the schema of a database. For example, when opening up a 10.3 encyclopedia with Rational System Architect 10.4 or later. Once the encyclopedia is opened (and therefore converted), the db_ddladmin role is no longer required for a user to read and write definitions in that encyclopedia. A change was made in 11.1 to the Files_History table as part of Synergy/Change integration. Therefore, encyclopedias created prior to 11.1 need first be opened by a user with db_ddladmin.

Execute rights on the following stored procedures:

CREATESNAPSHOT	GETHISTORYLOGGINGSTATUS
ENTITYEXISTSBYID	LOGENTITYHISTORYUPDATE
LOCKENTITYBYID	LOGFILESHISTORYUPDATE
GETNEXTID	PURGEHISTORY
GETFILESIZE	SAVEAUDITSETTINGS
DELETEBYID	SAVECHANGECONFIG

Minimum Access Rights for SQL Server 2005, including SQL Express

There is a minimum set of rights needed to open a SQL Server 2005 encyclopedia. The security model for SQL Server 2005 limits access to the metadata stored in system tables. Rational System Architect's encyclopedia schema checker needs access to this metadata in order for it to work properly. The additional permission needed to view this data is called VIEW DEFINITION. The permission can be granted as follows:

```
GRANT VIEW DEFINITION TO <principal>
```

Where principal is one of the following:

- user /role /application role
- user mapped to a Windows login/group/certificate
- user mapped to an asymmetric key
- user not mapped to a server principal
- SAEM has been updated to include this permission in the SAUser database role, thus any users added to this role will be able to open SA encyclopedias. (See the section 'Assigning 'sysadmin' permissions for SQL Server or SQL Express in Windows Vista' below for running SAEM in Windows Vista.)
- System Administrator should tell users where the server is and what their authentication method will be to create new encyclopedias on the server.

Assigning 'sysadmin' permissions for SQL Server or SQL Express in Windows Vista

User Access Control is a new security feature in Windows Vista and Windows Server 2008, which imposes a limit on the access rights assigned to a user through group memberships. For example, if a user is a member of Administrators, under Windows XP that user is typically automatically granted 'sysadmin' rights in the SQL Express instance. However, in Windows Vista or Windows Server 2008, those rights are not automatically granted. If an administrative privilege is granted to a user through a group membership, Vista and Windows Server 2008 requires some further action to ensure that this effective access right is granted to the user.

A common symptom of this problem is that you receive a message such as "CREATE DATABASE permission denied in database 'master.'" Another symptom is that you cannot connect to any database, even though you are a member of the Administrators group on your machine. If you experience the issues above, it means that you do not have effective 'sysadmin' rights on a SQL Express instance running under Vista Windows Server 2008. You can fix this problem by explicitly granting the 'sysadmin' role to your user account.

To assign the 'sysadmin' role to your user name proceed as follows:

1. Right-click the Rational System Architect Encyclopedia Manager (SAEM) icon and select **Run as administrator** from the context menu.
2. In SAEM, click **Server** and select **Logins**.
3. Ensure that your user name is showing in the list. If it is not, add it using the **Create a new Login** icon.
4. Double-click your user name in the list. The **Login Properties** dialog is displayed.

5. Click the **Server Roles** tab, and check **sysadmin** in the **Server** roles field.
6. Click **OK** and close the **Logins** dialog.

Note: As alternatives to the solution above, you can disable the User Access Control (which may pose a security issue), or you can run SAEM with Run as Administrator (step 1 above) each time you want to run SAEM.

Connecting to SQL Server Express from a client machine

In Windows Server 2003, for a Rational System Architect client to connect to SQL Server Express server, the TCP/IP protocol needs to be set on the server. If this is not done, the client may get an "Error -2147467259" message when attempting to connect to the server. To enable TCP/IP on a SQL Server Express server, proceed as follows:

1. Click on Start -> Programs -> SQL Server Configuration Manager.
2. Select the SQL Server 2005 Network Configuration node.
3. Click on **Protocols for SQLEXPRESS**. The protocols are displayed on the right.
4. Right-click on **TCP/IP** and select **Enable**.
5. Close the SQL Server Configuration Manager.

Install Rational System Architect to the local machine of each User

Install SA to each client machine. You may also choose to install SQL Express to each client machine in Rational System Architect's Startup Wizard; SQL Express is necessary if the user ever wishes to work on Rational System Architect models while off-line. During installation of SA, you will be asked to specify the directory that holds the License.dat license file.

Have users begin work

1. Start Rational System Architect: For a multi-user environment, the System Administrator must run FLEXnet licensing on the network to provide an available license slot for each user to work. Users working off-line on a stand-alone machine must have a valid license of Rational System Architect.
2. Start Rational System Architect: Each user starts their individual copy of Rational System Architect. (Run Rational System Architect by selecting Start, Programs, IBM Rational, Rational System Architect.) For machines onto which you have installed SQL Express, SQL Express should automatically run as soon as the user starts their machine. Users do not need a local instance of SQL Express running if they are

using an encyclopedia on the network; it is only necessary for users wishing to work on an encyclopedia on their local machine.

3. Each user may begin by taking one of the on-line tutorials in the product, create a new encyclopedia and begin working in Rational System Architect, or open an encyclopedia specified by the Project Leader or System Administrator.

The Startup Wizard attaches example encyclopedias to your server. You use some of these example encyclopedias while taking Rational System Architect's on-line tutorials. If you changed the default settings of the Startup Wizard so that it did not attach necessary example encyclopedias, you may attach them using SAEM. Each tutorial covers how to do this. Tutorials are accessed by selecting Help, Tutorials.

or

Create a new encyclopedia from scratch and begin work on your own. To create a new encyclopedia, consult the help – select Help, Help, and open the book Rational System Architect – General, Using Rational System Architect, Creating/Opening Project Encyclopedias, Creating/Opening an SQL Server Encyclopedia.

or

Open an encyclopedia on the network specified by the System Administrator or Project Leader.

II. Installations to SQL Express environments

Install Rational System Architect and SQL Express to network machine

1. Install SA to a server machine on the network. During installation of SA, you will specify a directory that will hold the License.dat license file. This directory must be available to all Rational System Architect users; it will hold the license slots.
2. When you run Rational System Architect's Startup Wizard, specify that SQL Express get installed to the server machine (this is the default setting). The server machine must have one of the following operating systems on it: Windows 2008, or Windows XP.
3. System Administrator should tell users where the server is and what their authentication method will be to create new encyclopedias on the server.

Install Rational System Architect to each user's local machine

Install SA to each client machine. When running the Startup Wizard, you have the option of installing SQL Express to the stand-alone machine; SQL Express is necessary if the user ever wishes to work on Rational System Architect models while off-line. During installation of SA, you will be asked to specify the directory that holds the License.dat license file.

Have users begin work

1. Start Rational System Architect: For a multi-user environment, the System Administrator must run FLEXnet licensing on the network to provide an available license slot for each user to work. Users working off-line on a stand-alone machine must have a valid license for Rational System Architect.
2. Start Rational System Architect: Each user starts their individual copy of Rational System Architect. (Run Rational System Architect by selecting Start, Programs, IBM Rational, Rational System Architect.) For machines onto which you have installed SQL Express, SQL Express should automatically run as soon as the user starts their machine. Users do not need a local instance of SQL Express running if they are using an encyclopedia on the network; it is only necessary for users wishing to work on an encyclopedia on their local machine.
3. Each user may begin by taking one of the on-line tutorials in the product, create a new encyclopedia and begin working in Rational System Architect, or open an encyclopedia specified by the Project Leader or System Administrator.

A. The Startup Wizard attaches example encyclopedias to your server. You use some of these example encyclopedias while taking Rational System Architect's on-line tutorials. If you changed the default settings of the Startup Wizard so that it did not attach necessary example encyclopedias, you may attach them using SAEM. Each tutorial covers how to do this. Tutorials are accessed by selecting Help, Tutorials.

or

B. Create a new encyclopedia from scratch and begin work on your own. To create a new encyclopedia, consult the help – select Help, Help, and open the book Rational System Architect – General, Using Rational System Architect, Creating/Opening Project Encyclopedias, Creating/Opening an SQL Express Encyclopedia.

or

C. Open an encyclopedia on the network specified by the System Administrator or Project Leader.

III. Installations to Oracle environments

Make sure all Rational System Architect users have proper access rights to Oracle

This section details how to create a Rational System Architect encyclopedia on an Oracle server. There is a one-to-one correspondence between a Rational System Architect encyclopedia and a schema object in Oracle. The schema object you create is given your user name by default, but you can also name it differently. The owning user will have a default Tablespace whose name matches the schema object name.

The user must have DBA and Connect privileges on the selected Oracle data source to create encyclopedias. These privileges are not required to read encyclopedias.

To create and access Oracle encyclopedias, a Rational System Architect user must have the Oracle OLEDB provider installed. The provider is a bridge that enables Rational System Architect to communicate and work with an Oracle server. Rational System Architect has been tested with OraOLEDB10.DLL version 10.2.0.1 for Oracle 10g; other versions may or may not work. Contact your Oracle DBA regarding the installation of the OraOLEDB.DLL.

You can access the Oracle database through the authentication method of the Windows Operating System, or through the User Id and Password method provided by the Oracle database. Once you establish a valid connection, you can switch over to the Schema Object that contains the selected encyclopedia.

Note: For Rational System Architect or Rational System Architect XT to use an Oracle server, the Oracle client must be installed on the same machine as Rational System Architect or Rational System Architect XT.

Character Set for Oracle

It is recommended that you use the NLS_NCHAR_CHARACTERSET AL16UTF16 to create encyclopedias in Rational System Architect properly. You should use the 10.2.0.1 version of OraOLEDB10.DLL for Oracle 10g; otherwise, you will receive schema validation errors upon opening an encyclopedia.

Each user will require the following minimum set of rights to access a Rational System Architect Encyclopedia.

Select, Insert, Update and Delete on the following tables:

ENTITY	CRITICALREGION
ERROR_LOG	SINGLETHREAD
FILES	FILES_HISTORY
IDGENERATOR	ENTITY_HISTORY
SAPROPERTIES	ENTITY_FLAGS
RELATIONSHIP	

Execute on the following stored procedures:

CREATESNAPSHOT	GETHISTORYLOGGINGSTATUS
ENTITYEXISTSBYID	LOGENTITYHISTORYUPDATE
LOCKENTITYBYID	LOGFILESHISTORYUPDATE
GETNEXTID	PURGEHISTORY
GETFILESIZE	SAVEAUDITSETTINGS
DELETEBYID	SAVECHANGECONFIG
DELETEBYIDS	

In addition to the above you also need to have granted permission CREATESESSION to access an Oracle encyclopedia.

When encyclopedias are created using Rational System Architect there are two settings that can be specified in the ADO section of the SA2001.ini file, the first setting controls the location of the file for each encyclopedias Tablespace. The second setting controls the initial size of each encyclopedia's Tablespace. If no settings are found in the SA2001.ini file then the physical file will be placed in the default location for the current Oracle database and the initial size is set to 50MB. To override this behavior add values to the sa2001.ini file as follows:

```
[ADO]
```

```
ADOraxxxxxTablespacePath=C:\oracle\userdata\oracle10\
```

```
ADOraxxxxxTablespaceSize=40
```

Where xxxxx should be replaced with the data source name that represents the Oracle server and database as defined in the tnsnames.ora file. The path specification should contain back slashes for Windows servers and forward slashes for Unix servers.

Note: the path specified must contain a trailing slash character or Rational System Architect will present an error.

This is granted to the user by the System Administrator through SQL Server Enterprise Manager 2005.

System Administrator should tell users where the server is and what their authentication method will be to create new encyclopedias on the server.

Install Rational System Architect to the local machine of each User

Install Rational System Architect to each client machine. You may also choose to install SQL Express to each client machine in Rational System Architect's Startup Wizard; SQL Express is necessary for users who want to work on Rational System Architect models while off-line. During installation of SA, you will be asked to specify the directory that holds the License.dat license file.

Have users begin work

1. Start Rational System Architect: For a multi-user environment, the System Administrator must run FLEXnet licensing on the network to provide an available license slot for each user to work. Users working off-line on a stand-alone machine must have a valid license of Rational System Architect.
2. Start Rational System Architect: Each user starts their individual copy of Rational System Architect. (Run Rational System Architect by selecting Start, Programs, IBM Rational, Rational System Architect.) For machines onto which you have installed SQL Express, SQL Express should automatically run as soon as the user starts their machine. Users do not need a local instance of SQL Express running if they are using an encyclopedia on the network; it is only necessary for users wishing to work on an encyclopedia on their local machine.
3. Each user may begin by taking one of the on-line tutorials in the product, create a new encyclopedia and begin working in Rational System Architect, or open an encyclopedia specified by the Project Leader or System Administrator.
 - a. The Startup Wizard attaches example encyclopedias to your server. You use some of these example encyclopedias while taking Rational System Architect's on-line tutorials. If you changed the default settings of the Startup Wizard so that it did not attach necessary example encyclopedias, you may attach them using SAEM. Each tutorial covers how to do this. Tutorials are accessed by selecting Help, Tutorials.

or
 - b. Create a new encyclopedia from scratch and begin work on your own. To create a new encyclopedia, consult the help – select Help, Help, and open the book Rational System Architect – General, Using Rational System Architect, Creating/Opening Project Encyclopedias, Creating/Opening an Oracle Encyclopedia.

or
 - c. Open an encyclopedia on the network specified by the System Administrator or Project Leader.

Roaming User Profiles

Rational System Architect supports Roaming User Profiles, which contain setting and configuration information that enables users to retain their personalized settings even when they log onto different machines on a network. SA stores user settings and connection data to a folder that roams with the user, such as %userprofile%\Application Data.

By default, Roaming User Profiles are not enabled. Therefore, the SA2001.ini file (which holds the configuration information described above) is placed in a local folder path, for example C:\Documents and Settings\\Local Settings\Application Data\Telelogic\System Architect. Conversely, when Roaming User Profiles are enabled, the SA2001.ini file is placed in the roaming folder path, for example C:\Documents and Settings\\Application Data\Telelogic\System Architect.

To enable Roaming User Profiles:

1. Open the Rational System Architect installation path, usually C:\Program Files\IBM\Rational\System Architect Suite\11.3.1\System Architect.
2. Using your XML editor of choice, open the FilePaths.xml file.
3. Locate the ProfilePath Location node. The default setting is FALSE, as shown here:

```
<ProfilePath Location="" UseRoamingProfile="FALSE">
```

4. Change the UseRoamingProfile value to TRUE, as follows:

```
<ProfilePath Location="" UseRoamingProfile="TRUE">
```


Upgrading to 11.3.1.3 and later

Beginning with Rational System Architect V10.3 new stored procedures and tables (for history) are created and changes are made to existing stored procedures in all encyclopedias. To upgrade Rational System Architect V11.2 encyclopedias to 11.3.1.3 you only need to open the V11.2 encyclopedias with Rational System Architect 11.3.1.3.

However, encyclopedias created with V10.1, V10.0, or V9 of the product must be converted to V10.3 format before they can be automatically upgraded by 11.3.1.3. This is a two-stage process:

Stage 1 – convert the data of the encyclopedia using SAEM, as follows:

1. Run Rational System Architect Encyclopedia Manager (SAEM) (select Start, Programs, IBM Rational, System Architect Suite, SAEM).
2. In SAEM, log in to the server containing the encyclopedia you wish to upgrade (select Server, Connect).
3. Choose the encyclopedia you wish to upgrade (select Database, Select Database).
4. In SAEM, select Tools, Convert to 10.3 Format. This will convert the data to the format necessary to be used with Rational System Architect 10.3.

Stage 2 – A person with a System Administrator's role, or the owner of the encyclopedia, must open the converted encyclopedia in Rational System Architect V10.3 or later, as follows:

5. Find out who the owner of an encyclopedia is using SAEM (for SQL Express) or Microsoft's Enterprise Manager (for SQL Server). Have that person or a person with a System Administrator's role, open the converted encyclopedia in SA V10.3 or later.
6. Rational System Architect will automatically try to add new stored procedures and tables to the existing encyclopedia when it is initially opened with SA V10.3 or later. As long as a person with a Systems Administrator role or the owner of the encyclopedia opens converted encyclopedia, the stored procedures will be properly created with an owner of 'dbo'.

Modifying, repairing, or removing Rational System Architect

The Rational System Architect Installation DVD enables you to modify the original components of Rational System Architect that you installed, repair components that are not working, or remove the program entirely. To perform any of the above tasks, do the following:

1. Insert the Installation DVD into your DVD drive.
2. Run the <installtionfilename.exe> executable from the DVD.
3. Select Install Rational System Architect on the initial installation screen to launch the installation wizard.
4. On the next screen of the wizard, select Modify, Repair, or Remove, as appropriate.
5. Rational System Architect can also be removed using standard Windows techniques to remove a program (by selecting Add/Remove Programs in the Settings, Control Panel).

Summary of conversion instructions

You must convert encyclopedias created with previous versions of Rational System Architect for use with 11.3.1.3. The conversion process is straightforward. The Conversion Guide manual contains complete instructions for converting and it is provided in .PDF format on the installation DVD or in Rational System Architect Information Center:

<http://publib.boulder.ibm.com/infocenter/rsdp/v1r0m0/index.jsp>. If you do not have access to the DVD, please contact your System Administrator.

Rational System Architect addon products

Rational System Architect provides installation files for the following addon products:

- Rational System Architect for IAF
- Rational System Architect for ERP Interface
- Rational System Architect for SOA
- Rational System Architect DOORS Interface

- Rational System Architect Process Integrator
- Rational System Architect UML 2

Installing Rational System Architect addon products

The successful installation of the addon products above relies on Rational System Architect already being installed. If the installation of the addon product does not find Rational System Architect, or if the SA2001.INI file is not found, a message is displayed informing you as such and the installation will terminate. The exception here is the Rational System Architect for ERP Interface installer, which does not depend on Rational System Architect already being installed.

To install an addon product, follow the same process as installing Rational System Architect (see page 10). Essentially, you click on the addon executable and follow the instructions provided by the installation wizard.

Alternatively, you can use install the addon products with the command line options as described in the section below.

Installing Addon products with Command Line Interface

There are several options you can use to install the Rational System Architect addon products, as described below.

Installing Rational System Architect for IAF or Rational System Architect for SOA:

To perform a standard command line installation, type the following text at the command line prompt:

```
<installname.exe>
```

To perform a silent command line installation, type the following text at the command line prompt:

```
<installname.exe> /s /v"/qn LAPAGREE=\"Yes\""
```

To perform a silent install for just the current user, you can specify the `INSTALL_FOR_ALL_USERS` property. To install only for the current user, type the following text at the command line prompt:

```
<installname.exe> /s /v"LAPAGREE=\"Yes\"  
INSTALL_FOR_ALL_USERS=\"2\""
```

Installing Rational System Architect for ERP:

To perform a standard command line installation, type the following text at the command line prompt:

```
<installname.exe>
```

To perform a silent installation, type the following text at the command line prompt:

```
<installname.exe> /s /v"/qn TLLICENSESERVER="\19353@<servername>\"  
LAPAGREE="\Yes\" "
```

Installing Rational System Architect Doors Interface:

To perform a standard command line installation, type the following text at the command line prompt:

```
<installname.msi>
```

To perform a silent installation, type the following text at the command line prompt:

```
Msiexec <installname.msi> /qn LAPAGREE="Yes"
```

Silent installation overview

In addition to the standard installation options described earlier, you can also perform a silent installation. A silent installation uses Microsoft Windows Installer (MSI) Technology, enabling you to install Rational System Architect without entering the necessary input in the dialog boxes. This is helpful to a Systems Administrator who wants all the users, to whom he gives access, to carry out the same installation.

See the installation prerequisites on page 7 before proceeding.

IMPORTANT: Providing complete information about MSI is beyond the scope of this installation guide. For complete MSI and related information go to the following Microsoft websites:

- For information on SMS installation techniques, see: <http://technet.microsoft.com/en-us/library/cc181465.aspx>.
- For a complete list of command line options for the Windows Installer, see: [http://msdn.microsoft.com/en-us/library/aa367988\(VS.85\).aspx](http://msdn.microsoft.com/en-us/library/aa367988(VS.85).aspx)
- The Windows Installer uses Msiexec. For more information on Msiexec, see: <http://technet.microsoft.com/en-us/library/bb490936.aspx>.

Silent installation requirements

As of this writing, to use the silent install option for Rational System Architect requires that the Microsoft Windows Installer 3.1 Service and above is installed on the target computer. If it is not, the installer notifies you, and directs you to obtain the Microsoft Windows Installer at <http://support.microsoft.com/kb/893803>.

All product options available for silent installation are exposed as public properties that you can set on the Msiexec command line or through custom transform files. The properties are as follows:

Property	Description
TLDESKTOPSHORTCUT ("Yes"/"No")	Create a desktop shortcut - default is "Yes"
TLLICENSESERVER (string)	Licensing path
LAPAGREE (string)	License Acceptance process and by default it is "No"
ADDLOCAL	By default it's ALL
COMPANYNAME	By default it's blank
USERNAME	By default it's blank

Older properties that are no longer supported are as follows:

Property	Description
LICEENSESERVER	Replaced by TLLICENSESERVER
CREATESHORTCUTS	Replaced by TLDESKTOPSHORTCUT

Command line options

The command line options you can use for Rational System Architect vary according to the version you need to install. Those options are as follows:

Command line for Rational System Architect 11.3, 11.3.01 and 11.3.02 (no UI mode)

The following example illustrates the use of the options listed above. It is a basic command line you can use to install the complete Rational System Architect on the specified machine:

```
msiexec /i "SystemArchitect_Enu_11.3.msi" /qn INSTALLDIR="
C:\Program Files\IBM\Rational\System Architect Suite\11.3.1\System
Architect" TLLICENSESERVER="C:\SALicense\license.dat"
LAPAGREE="Yes" TLDESKTOPSHORTCUT="Yes"
```

Note: The value for the TLLICENSESERVER property in the example above can also be a license server (e.g. TLLICENSESERVER="19353@server").

Command line options for Rational System Architect 11.3.1.3 (no UI mode)

In the above, the default for the ADDLOCAL property is set to ALL, and therefore installs all Rational System Architect components. If the ADDLOCAL is not provided in the command line, it installs everything packaged inside the MSI by default.

The following example illustrates the use of the options listed above and this command line is a basic command line by using this user can install the complete Rational System Architect on the specified machine:

```
ratlSysArch_11-3-1-2.exe /s /v" /qn LAPAGREE="\Yes\" INSTALLDIR="\
C:\Program Files\IBM\Rational\System Architect Suite\11.3.1\System
Architect" TLLICENSESERVER="\C:\SALicense\license.dat\"
TLDESKTOPSHORTCUT="\Yes\""
```

Note: The value for the TLLICENSESERVER property in the example above can also be a license server (e.g. TLLICENSESERVER="19353@server").

Custom silent installation

Installing Rational System Architect in silent mode enables you to use some custom properties. These are applicable to Rational System Architect versions 11.3 and higher. To perform a custom silent installation you have to use the ADDLOCAL MSI property in the command line. With the ADDLOCAL you have to use the custom properties provided by the Rational System Architect installer. The custom properties available are listed below.

If you want to install only specific System Architect components, use the following properties:

Property Name	Description
SA_ALWAYSINSTALLTHESE	This is the default components for installing System Architect. When you use the ADDLOCAL property this has to be provided as default.
SA_PUBLISHER	SA_COMPARE - Compare two encyclopedias and generate a website displaying the results. (SA Compare)
SA_CATMAN	Provides role-based access control to enterprise encyclopedias. (SA Catalog Manager)
SA_SQLEXP	SQL Server 2005 Express. SQL Express may be installed using the Startup Wizard. (SQL Express)
SA_SAEM	Various tools to help manage and maintain System Architect encyclopedias. (SA Encyclopedia Manager)
SA_SIMII	Simulate IDEF3 Process Flow, BPMN, and Process Chart diagrams using Lanner's WITNESS simulation engine. (SA Simulator II)
SA_HELP	Product documentation, tutorials, and more. (Help)
SA_SAMPLE	Sample Encyclopedias (Samples) If this is provided then all the samples encyclopedias provided with the application are installed.

If you want to select which encyclopedias to install, you can specify their names as shown below, along with the other properties above.

Encyclopedia Name	Encyclopedia Description
SA_GEN_SAMPLE	General Encyclopedias
SA_QUICK_TUTORIAL	Quick Start Tutorial
SA_DODAF_SAMPLE	DoDAF Encyclopedias
SA_DODAFABM_SAMPLES	DoDAF-ABM Encyclopedias
SA_DODAF_TUTORIAL	DoDAF Tutorial
SA_DODAFABM_TUTORIAL	DoDAF-ABM Tutorial
SA_OBJECT_MODEL	Object Model Encyclopedias
SA_SIM_SAMPLES	Simulation Encyclopedias
SA_SIM_TUTORIAL	Simulation Tutorial
SA_XML_SAMPLES	XML Encyclopedias
SA_RDES_SAMPLES	RDES Encyclopedias
SA_OBJECT_MOD_EXAMPLE	Object Model Examples
SA_ELEARNING_SAMPLES	eLearning Encyclopedias

Command line for 11.3, 11.3.01, and 11.3.02 (no UI mode)

The command line sample below has all the custom properties listed in the ADDLOCAL property:

```
msiexec /i "SystemArchitect_Enu_11.3.msi" /qn
INSTALLDIR="C:\Program Files\IBM\Rational\System Architect Suite"
TLLICENSESERVER="C:\SALicense\license.dat" LAPAGREE="Yes"
TLDESKTOPSHORTCUT="Yes"
ADDLOCAL="SA_ALWAYSINSTALLTHESE,SA_PUBLISHER,SA_COMPARE,SA_CATMAN,
SA_SQLEXP,SA_SAEM,SA_SIMII,SA_HELP,SA_SAMPLE"
```

The command line sample below has few custom properties listed in the ADDLOCAL property and is a custom installation with only a few Rational System Architect components.

```
msiexec /i "SystemArchitect_Enu_11.3.msi" /qn
INSTALLDIR="C:\Program Files\IBM\Rational\System Architect Suite"
TLLICENSESERVER="C:\SALicense\license.dat" LAPAGREE="Yes"
TLDESKTOPSHORTCUT="Yes"
ADDLOCAL="SA_ALWAYSINSTALLTHESE,SA_COMPARE,SA_CATMAN,SA_SQLEXP,SA_
SAEM,SA_HELP,SA_ELEARNING_SAMPLES,SA_GEN_SAMPLE"
```

Command line for 11.3.1.3 (no UI mode)

This command line sample below has all the custom properties listed in the ADDLOCAL property:

```
ratlSysArch 11-3-1-2.exe /s /v" /qn LAPAGREE="\Yes\"
INSTALLDIR="\C:\Program Files\IBM\Rational\System Architect
Suite\" TLLICENSESERVER="\C:\SALicense\license.dat\"
```



```
TLDESKTOPSHORTCUT="Yes\"
ADDLOCAL="SA_ALWAYSINSTALLTHESE,SA_PUBLISHER,SA_COMPARE,SA_CATMAN,SA_SQLEXP,SA_SAEM,SA_SIMII,SA_HELP,SA_SAMPLE\" "
```

The command line sample below has a few custom properties listed in the ADDLOCAL property and is a custom installation with only a few Rational System Architect components.

```
ratlSysArch_11-3-1-2.exe /s /v" /qn LAPAGREE="Yes\"
INSTALLDIR="C:\Program Files\IBM\Rational\System Architect Suite\
TLLICENSESERVER="C:\SALicense\license.dat\TLDESKTOPSHORTCUT="Yes\"
ADDLOCAL="SA_ALWAYSINSTALLTHESE,SA_COMPARE,SA_CATMAN,SA_SAEM,SA_SIMII,SA_HELP,SA_ELEARNING_SAMPLES,SA_GEN_SAMPLE \" "
```

You can create MSI transforms if you need to specify many silent install options.

Silent installation requirements for SA DOORS Integration

As of this writing, to use the Silent install option for Rational System Architect and Rational System Architect DOORS Integration requires that the Microsoft Windows Installer 3.1 Service be installed on the operating system of the target computer. If it is not present, the installation cannot continue and you are notified how to obtain and install the Windows Installer 3.1.

All product options available for silent installation are exposed as public properties that you can set on the Msiexec command line or through custom transform files. The properties are as follows:

Property	Description
TLDESKTOPSHORTCUT ("Yes"/"No")	Create a desktop shortcut - default is "Yes"
TLMASTER ("Yes"/"No")	Called from the Master Installer - default is "No"
TLUPGRADE ("Yes"/"No")	Called from the Master Installer – for the auto–upgrade or to auto–uninstall and install the new version
TLLICENSESERVER (string)	Licensing path from Master Installer (if specified, may be null or undefined)
TLCLEAR ("Yes"/"No")	Clear all user preferences, default is "No"

Older properties no longer supported are:

Property	Description
----------	-------------

MASTERINSTALLDIR	Replaced by TLMASTER
LICENSESERVER	Replaced by TLLICENSESERVER
CREATESHORTCUTS	Replaced by TLDESKTOPSHORTCUT

The following example illustrates the use of the options listed above:

```
msiexec /i SystemArchitect_Enu_11.2.22.msi INSTALLDIR="C:\Program Files\IBM\Rational\System Architect Suite" TLLICENSESERVER="C:\SALicense\license.dat" LAPAGREE="Yes" /qb TLDESKTOPSHORTCUT="Yes"
```

Note: The value for the TLLICENSESERVER property in the example above can also be a license server (e.g. TLLICENSESERVER="19353@server").

Rational System Architect Integrations

Rational System Architect integrates with other Rational products as follows:

- Rational System Architect DOORS® Interface 11.3.1.3, which is available with Rational System Architect 11.3.1.3, is compatible with Rational DOORS 9.0, 9.1, and 9.2.
- Rational System Architect Change™ integration supports Rational Change 4.7, 5.0 and 5.1.
- Rational System Architect Focal Point™ Integration supports Rational Focal Point™ server 6.2 or higher.
- Rational System Architect RDS integration supports RDS 5.0.
- Rational System Architect RPE integration supports Report Publishing Engine 1.1
- Rational System Architect Insight integration supports Rational Insight 1.0
- Rational System Architect Cognos Bridge supports IBM Cognos® Business Intelligence 8.4.1

Installing Rational System Architect XT

2

This chapter instructs you how to install IBM Rational System Architect XT™ and related products. The chapter is partitioned into sections that cover different scenarios of installing the product.

- Introduction
- Requirements for the Rational System Architect XT installer
- IIS server requirements for SA XT
- Requirements for the SA XT client PC
- SA XT and SA integration
- SA XT and IBM Rational SA Catalog Manager™ integration
- Accessing encyclopedias with Rational System Architect XT
- License requirements for SA XT and SA XT Web Service
- Preparing to install the Rational System Architect XT software
- Installing Rational System Architect XT
- Verifying SA XT website properties in IIS
- Editing the web.config file
- Folder permissions for the SA XT Domain Account
- Testing the Rational System Architect XT website
- Adding encrypted security to the Impersonation Account
- Adding encrypted security to Oracle
- Registering the .NET Framework
- Enabling Rational System Architect XT Web Service add-on product
- Uninstalling Rational System Architect XT

Introduction

IBM Rational System Architect XT is a web application that publishes an interactive website of Enterprise Encyclopedias. Users can run custom or standard reports to get real-time views of diagrams and definitions, and apply access control via role-based views, among other features. Encyclopedias published on the Rational System Architect XT website are created with IBM Rational System Architect®, and permissions to them are administered by SA Catalog Manager.

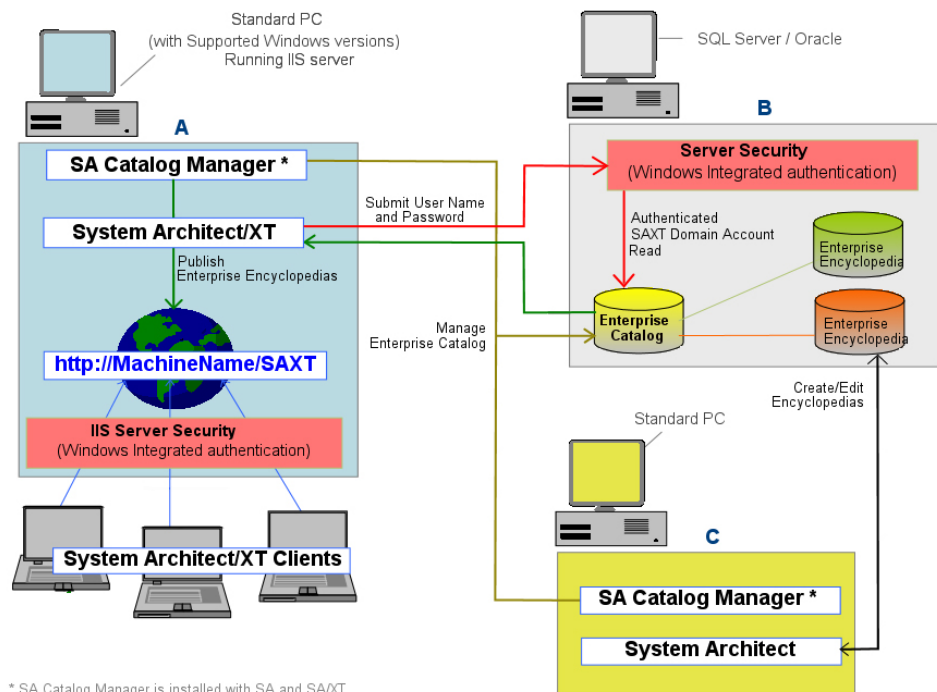
IBM provides an optional add-on product, Rational System Architect XT Web Service, which makes it easy for clients to publish Rational System Architect encyclopedia information on their corporate intranet. The Web Service exposes SA XT methods, providing consumer applications read-access to repository objects they can use to run Rational System Architect reports.

SA XT installation overview

IBM provides full Rational System Architect XT installations only. This means that you need to uninstall an old version of SA XT before you install a new version. Periodically, service packs, patches or hot fixes are made available on the IBM Rational support site (<http://www-01.ibm.com/software/awdtools/systemarchitect/support/>) that will update your existing version. You do not need to uninstall SA XT when you install a service pack, patch or hot fix, unless otherwise instructed on the support site.

Rational System Architect XT installation

SA XT requires that the same version of Rational System Architect be installed on a different computer on the network, as shown in the figure below. The Rational System Architect XT installation also installs SA Catalog Manager. SA Catalog Manager can be run from the SA XT machine (A) or from the computer in which standard Rational System Architect is installed (C).



Note: An alternate configuration to that shown above is to install SA XT (A) on the

same computer as the SQL Server/Oracle database (B); such a configuration yields optimum performance, but is not required. It is a best practice if the connection speed between the encyclopedia server and the SA XT machine is less than 1 GB.

Requirements for the Rational System Architect XT installer

The SA XT installer must possess administrative privileges on the computer in which he or she is installing the software. Although SA XT automates much of the installation, it cannot make the required changes without the following:

- Administrative privileges on the SQL Server or Oracle servers where encyclopedias (i.e. databases) are created. This is required for SA Catalog Manager to create users, to grant them access to encyclopedias, and to assign them roles on those encyclopedias (see below).
- Permission to create a Domain Account on the network for SA XT to use. You can also use existing account, if it has the required permissions. SA XT uses the credentials of the Domain Account to connect to servers (via Windows Integrated authentication) where the catalogs and encyclopedias reside. The Domain Account is also known as the ‘impersonation account’—the SA XT application “impersonates” the Domain Account (see pg. 53 for more information).
- Permission to create a Domain Account on the network that SA XT Web Service can use. Note, the SA XT Web Service add-on can also use the same Domain Account that is used by SA XT, or it can use different Domain Account. Either way, the Domain Account for the SA XT Web Service has the same requirements listed for SA XT above.

System requirements for Rational System Architect XT

- Microsoft Internet Information Services versions 5.1 or 6 (this version has some unique requirements, which are described below where applicable) – Rational System Architect XT requires an internet server to host the SA XT website through which users access Enterprise Encyclopedias.
- Microsoft .NET Framework 3.5 (also installs 2.0), with the latest available Service Packs. If the SA XT installation does not find the .Net Framework, or it finds version 1.1, it will automatically install the .NET Framework 3.5 (and 2.0) without upgrading or affecting version 1.1.

Operating system requirements

Server operating system requirements

Rational System Architect XT requires one of the Microsoft Windows operating systems below:

- Windows Server 2003 (32-bit only) Standard, Enterprise and Datacenter editions
- Windows Server 2003 R2 (32-bit only) Standard, Enterprise and Datacenter editions

Internet browsers

The requirement for Rational System Architect XT clients is that you use one of the supported internet browsers, which are as follows:

- Microsoft Internet Explorer 6.0, or 7.0
- Mozilla Firefox 3.0, or 3.5.9 (only on Windows operating systems)
- Java Runtime Environment – the minimum version required is JRE 1.5. The JRE enables SVG graphics to be displayed via the Java-based SVG viewer applet (from Batik). At run-time, if SA XT finds that the JRE is not installed, a dialog will inform you that you need to install it and provide a link to the website from which you can download it.

Additional products used or installed

- Microsoft's .NET Framework 3.5 (also installs 2.0) with the latest available Service Packs (will auto-install if not present or if an older version is found).
- The Microsoft Internet Information Services – if IIS is already enabled in the operating system, SA XT configures it accordingly. Otherwise, you need to enable IIS in the operating system (see pg. 42).

Hardware requirements

- Pentium-class PC, 2 GHz or higher, minimum of 1 GB of RAM, Super VGA monitor (with the screen resolution set to at least 800 x 600, small fonts setting).
- Disk space: 3.5 GB during installation and 300 MB after the install is complete.
- 60 Mb of memory for the first user, plus 40 Mb for each additional user.
- 37 Kb of Desktop Heap allocation for each SA XT and SA XT Web Service session. The amount of available Desktop heap in Windows is controlled by a setting in the Registry. Desktop heap allocation is dependent on the anticipated number of concurrent users. This setting lets you increase the default number of concurrent users allowed, which is twelve (see pg. 60 for more information).
- High-speed network connection between the SA XT server and the SQL or Oracle Database server.

SA XT and SA integration

Rational System Architect XT works with Rational System Architect. In SA, users create encyclopedias, which are databases on SQL Servers or Schemas in an Oracle database. When encyclopedias are shared among multiple users, access to them is controlled via SA Catalog Manager. Such encyclopedias are classified as Enterprise Encyclopedias. An SA XT website publishes Enterprise Encyclopedias. An encyclopedia that is *not* attached to an Enterprise Catalog is classified as a Professional Encyclopedia; this type may be shared amongst users, but cannot be published by SA XT.

SA XT and SA Catalog Manager integration

The SA Catalog Manager utility is installed by Rational SA and Rational System Architect XT. SA Catalog Manager controls access to Enterprise Encyclopedias. On each server, SA Catalog Manager creates an Enterprise Catalog. The catalog administrator who creates the catalog becomes its owner, can add users to the catalogs, and determine which encyclopedias users can view. Optionally, the admin can select the encyclopedia artifacts a user can view.

When a user on a client machine browses the SA XT website, he or she must select an encyclopedia server. The SA XT server (on IIS) then reads the catalog on the selected server. The catalog detects the encyclopedias the user is allowed to view on that server and displays them in a drop-down list. When the user selects an encyclopedia, the catalog filters the encyclopedia artifacts that that user can view based on his or her assigned role.

See chapter 3 of this installation guide or SA Catalog Manager's online help for more information on Enterprise Catalogs.

Accessing encyclopedias with Rational System Architect XT

Note: For Rational System Architect or Rational System Architect XT to use an Oracle server, the Oracle client must be installed on the same machine as Rational System Architect or Rational System Architect XT.

To view or edit encyclopedias through the Rational System Architect XT website, you need the same permissions as you do with standard Rational System Architect. In other words, an individual must exist as a user in the catalog, and at login, supply his or her DomainName\UserName combo and password to view encyclopedias. If you are already logged into the domain when you launch SA XT, you will not be prompted to enter your log in credentials.

Another requirement to access an encyclopedia through the SA XT website is that its property configuration files are up-to-date. This is achieved by simply opening an encyclopedia with a Rational System Architect version that is the same version as SA XT. Doing so compiles the property file and brings it up to date. If you do not perform this step, the encyclopedia is considered out-of-date, and users will be unable to open it. Therefore, opening encyclopedias with a standard copy of Rational System Architect should be considered a part of any installation, upgrade, or service pack that you apply.

Server Roles and Permissions

The SA XT Domain Account (i.e., impersonation account) needs the same connection privileges and access to the encyclopedia server, and to the Enterprise Catalog as typical System Architect users. Therefore, you must grant the Domain Account appropriate rights on each server you wish to access. The roles, encyclopedia access and catalog access are described in *I. Installations to SQL Server environments* section on page 12. For more detailed information on permission to encyclopedia catalogs, see the *3 - Set up User rights to Encyclopedias* section on page 79.

License requirements for SA XT and SA XT Web Service

SA XT does not support node-lock licensing. You must use a license from a License Server because SA XT limits the number of user sessions that it runs based on the number of licenses purchased. A License Server is required to keep count of the number of licenses in use at any one time.

The default SA XT login page contains a radio button where you choose to login as a Reader or as an Updater. A Reader uses one “SA-XT” license, plus one “SA-XT Read Only” license. An Updater uses one “SA-XT” license, plus one “SA-XT Read-Write” license. An SA XT Web Service session uses one SA-XT license plus one SA-XT-WebService license. This is summarized in the table below.

<u>Product</u>	<u>License(s) used</u>
SA XT Read Only	SA-XT + SA-XT-Read
SA XT Read-Write	SA-XT + SA-XT-Read-Write
SA XT Web Service	SA-XT + SA-XT-WebService

See the Rational System Architect Installation Guide for more detailed information on setting up and accessing licenses from a license server. You can find the Rational System Architect Installation Guide in the Rational System Architect Information Center: <http://publib.boulder.ibm.com/infocenter/rsdp/v1r0m0/index.jsp>.

Automated Rational System Architect XT installation tasks

Rational System Architect XT is based on Microsoft's ASP.NET technology, which is part of the .NET Framework. To create the website and manage access to it, the SA XT installation enables and configures those Windows services and components that it needs to publish the SA XT website. The components SA XT configures are as follows:

- Microsoft Internet Information Services (IIS) 5.1 or higher - creates and configures a Virtual folder for the SA XT website.
- Directory Security - enforces security for the SA XT website through Integrated Windows authentication. This checks the identity credentials that users submit before they are allowed to access the secured website content.
- Enables .SVG graphic support by configuring IIS and installing the Java applet to view .SVG files. Installation of the Java applet requires that the Java Runtime Environment be installed; if it is not, you can install the JRE and configure .SVG support manually.
- Creates a Windows User Account (also referred to as the "Domain Account"). At installation time, you can choose the name (in the form DomainName\UserName) and a password for this account. The account is granted permissions to select folders. You can use an existing account, as long as it has required permissions.

Preparing to install the Rational System Architect XT software

Before you install Rational System Architect XT, it is recommended that you backup and are able to restore the following Windows components, which the SA XT installation may modify:

- IIS Metabase -- the installation process may update the IIS Metabase.

To find IIS Metabase backup documentation go to:

http://www.microsoft.com/windowsserver2003/community/articles/art_iismetabak.msp

- Windows Registry – if you need to increase the number of concurrent users, or to add encrypted password security after the installation completes, you will need to edit registry.

To find Registry backup documentation go to:

<http://support.microsoft.com/kb/322756>

Checking that Internet Information Services is installed

If the Windows IIS component is not enabled in the computer where SA XT is to be installed, you can enable it manually as follows (provided you have the proper privileges).

1. Click Control Panel and select Administrative Tools.
2. Click the Internet Information Services icon, and go.
3. If you see the **Internet Information Services** icon, it means that the computer has IIS installed and enabled.
4. If you do not see the **Internet Information Services** icon, you need to install it as follows.
5. Click on the **Control Panel**.
6. Click on Add or Remove Programs icon.
7. Click Add/Remove Windows Components.
8. Toggle on **Internet Information Services (IIS)**, and click **Next** to complete the Wizard

Installing Rational System Architect XT

1. To install Rational System Architect XT proceed as follows.
 - If you **downloaded** the software from the IBM Rational Web Site, double-click on the executable file you downloaded to run the installation.
 - If you received an installation DVD from IBM, insert your Rational System Architect Installation DVD into your DVD-drive. The auto-run interface is launched. Click on the **Install**.
2. In the **Welcome** screen, click **Next** to begin the installation.
3. Follow the instructions provided the Installation Wizard.
4. When the wizard gets to the **Impersonate Login** screen, , enter your **User Name** and **Password** values as shown below. SA XT submits these values to login to SQL or Oracle encyclopedia servers.



The checkbox **Use the above user name and password for database login** option works as follows:

If you enable the option, SA XT uses Windows Integrated Security to login to SQL database server. It will not work with Oracle. As by default, MS SQL Server only allows login via Windows Integrated Security, this option should normally be checked if using SQL Server. By default, Oracle database server will not accept such logins, so the option should not be checked. If in doubt, ask your Database Administrator what type of user authentication is used.

If you do not enable the option, and click Next, the Database Login dialog is displayed, as shown below. In this dialog, enter the User Name and Password credentials to login to Oracle or SQL databases, and click Next. Note, the user must be defined to use SQL Authentication if you use this option for SQL Server. This is also true for Oracle, but Oracle authentication is the default method for Oracle.



5. Click **Next**.
6. In the **Start Copying Files** dialog, click **Next**.
7. Click **Finish** in the InstallShield Wizard Complete dialog.

If you purchased either the DoDAF-ABM or DoDAF (c4isr) features, open the installation folder (C:\Program Files\IBM\Rational\System Architect Suite\11.3.1\System Architect) and perform the appropriate file copy operation as follows:

For **DoDAF-ABM**, copy:

sadeclar.abm to sadeclar.cfg
autoexec.abm to autoexec.sty

For **DoDAF(c4isr)**, copy:

sadeclar.c4 to sadeclar.cfg

Verifying SA XT website properties in IIS

Before users logon to the SA XT website, or if they are having problems viewing the website, you can verify that your website properties in IIS are set up as required.

1. Click on Start > Settings > Control Panel > Administrative Tools > and select Internet Information Services.
2. Expand the **local computer** node. This is usually indicated by your computer name, for example ComputerName (local computer).
3. Expand the **Web Sites** folder and then the **Default Web Site** node.
4. Right-click on the new **SAXT** website and select **Properties**.

You can use the procedures below to verify that your SA XT website is setup correctly.

- 1 - Checking and configuring ASP.NET mapping
- 2 - Setting directory security manually
- 3 - Set the default page for SA XT website
- 4 - Verifying that the .SVG MIME type is present

The procedures above are detailed in the sections that follow.

1 - Checking and configuring ASP.NET mapping

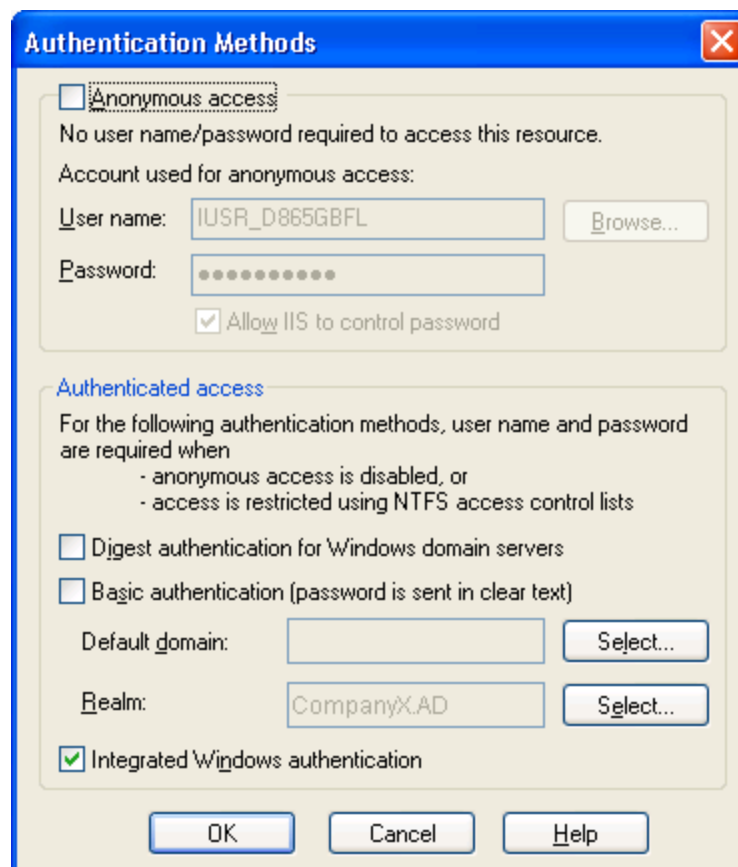
1. On the **Virtual Directory** tab, click the **Configuration...** button.
2. On the **Mappings** tab, locate the **.aspx** entry in the **Extension** column. The **Executable Path** column for this entry should display

```
C:\Windows\Microsoft.NET\Framework\  
v2.0.50727\aspnet_isapi.dll.
```

If the **.aspx** entry appears and it contains the above values for the **Executable Path**, then click **OK** and proceed to next section “Setting directory security manually.” If the **.aspx** entry does *not* appear, it means SA XT is not mapped to the correct ASP.NET version. In this case, click **Cancel** to return to the **Virtual Directory** tab. You need to map SA XT to the correct version of ASP.NET as described in the “Registering the .NET Framework” section on page 66.

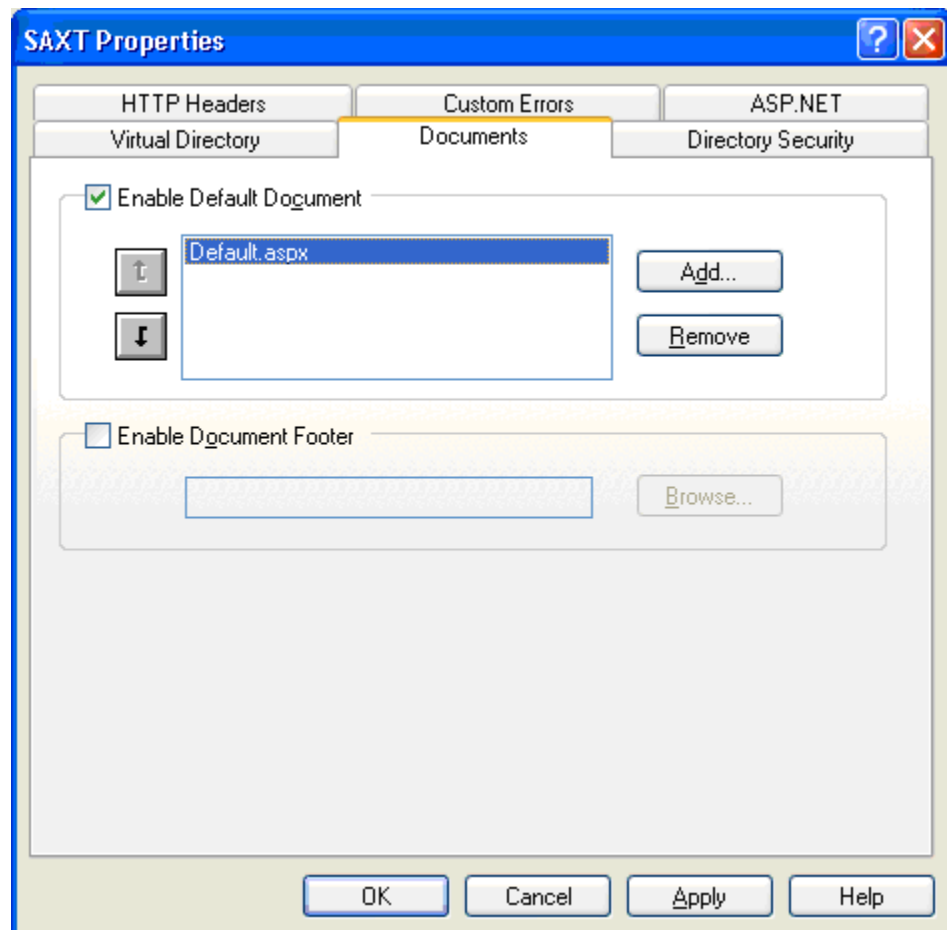
2 – Setting directory security manually

1. Click on the **Directory Security** tab.
2. In the Anonymous access and authentication control group box, click Edit.
3. Check the Integrated Windows authentication.
4. Uncheck all other checkboxes and click **OK**.



3 - Setting the default page for SA XT website manually

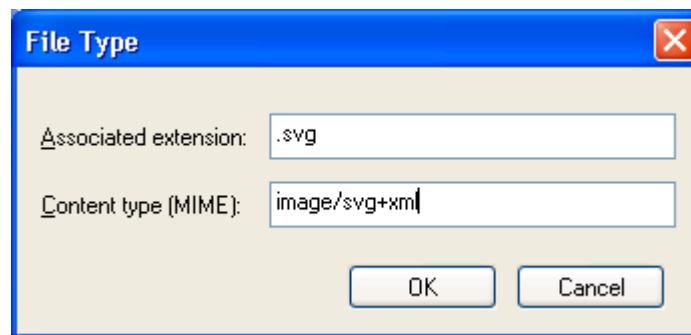
1. Click the **Documents** tab.
2. Make sure **Enable Default Document** checkbox is checked that the file name **Default.aspx** appears in the list.
3. If the **Default.aspx** does not appear on the list of files, click **Add**.
4. Enter **Default.aspx** and click **OK**.
5. Select the **Default.aspx** file and use the **Up** button to move the file to the top of the list.



4 - Verifying that the .SVG MIME type is present

SA XT uses the .SVG file format to display diagrams and charts. If diagrams do not display correctly, you can check that the SVG setting in IIS is setup properly.

1. Click on the **HTTP Headers** tab.
2. In the **MIME Map** group click the **File Types...** button.
3. If the **Registered file types** field already contains the value **.svg image/svg+xml**, click **Cancel**, and proceed to the next section. If **.SVG** is not displayed in the list, click the **New Type** button.
4. Enter **.svg** in the **Associated extension** field, and enter **image/svg+xml** in the **Content type (MIME)** field, and click **OK**.



5. In the **File Types** dialog, the **Registered file types** field should now contains the value **.svg image/svg+xml**. Click **OK**.
6. On the main **SAXT Properties** dialog, click **OK** to return to the IIS Admin tool.
7. In the IIS Admin tool, click **File > Exit**.

Editing the web.config file

Edit the web.config file to enter the User Name and Password for the SA XT Impersonation Account. You only need to do this if you want to change the User Name and password that you entered during the SA XT installation. The web.config file is located in the SA XT installation folder, usually

C:\Program Files\IBM\Rational\System Architect Suite\11.3.1\SAXT.

1. Open the **web.config** file with any text editor.
2. Update the **userName** and **password** attributes of the identity element with your new User Name and Password values. Substituting your actual values, the identity element should appear like this:

```
<identity impersonate="true" userName="DomainName\UserName"
password="password"/>
```

3. Save and close the **web.config** file.

Note: If you are concerned about storing the User Name and Password with clear text, see the “Adding encrypted security to the Impersonation Account” section on page 62.

IIS 6.0 only – set IIS to use NTLM authentication

You should read this section only if you are installing SA XT to an IIS 6.0 server. In such an environment, you may need to configure NTLM manually with Integrated Windows authentication as the authentication mechanism.

If you use IIS v. 6.0 and your SA XT server does not work properly, you may use the steps below to check your security settings are properly set up.

1. Click **Start > Run**, type **cmd** in the **Open** field, and click **OK**.
2. Open the directory C:\InetPub\Adminscripts.
3. Type the following command and press **Enter**:

```
Cscript adsutil.vbs get w3svc/NTAuthenticationProviders
```

No further action is required if the command returns:

```
NTAuthenticationProviders: (STRING) "NTLM."
```

If it does not return the above, proceed to step 4 below.

4. From the command prompt, run the following command:
Cscript adsutil.vbs set w3svc/NTAuthenticationProviders "NTLM"
5. Repeat step 3 above to confirm the setting has been corrected.

Adding Oracle authentication for SA XT and SA XT Web Service

Note: You can enter the login credentials for Oracle databases at install time through the Rational System Architect XT Installation wizard. The information that follows is provided to enhance the usability of this installation guide. You may use as a reference or for troubleshooting purposes.

Rational System Architect XT and the SA XT Web Service support Oracle authentication to access encyclopedias in Oracle databases. You can also use the default integrated windows authentication. To enable Oracle database security, the web.config files for SA XT and for SA XT Web Service contain two items in the *connectionStrings* section. The items are *DBUser* and *DBPassword*. If the *connectionStrings* value of the *DBUser* item is not empty, the system will attempt to connect to the selected server using the values provided in the *connectionStrings* fields. If the *connectionStrings* value of the *DBUser* item is empty, the system will continue to use windows integrated authentication when it connects to the database server.

The following example forces the SA XT or SA XT Web Service to connect to the database server with the User Name *Oracle.SAXTWebUser* and the password *Oracle.SAXTpwd*.

```
<connectionStrings>
    <add name="DBUser" connectionString="OracleSAXTWebUser" />
    <add name="DBPassword" connectionString="OracleSAXTpwd" />
</connectionStrings>
```

You can access your Oracle encyclopedias by using the clear text settings above, or you can add another layer of security through encryption. To add encryption to Oracle authentication, see the “Adding encrypted security to Oracle authentication” section on pg. 64.

Folder permissions for the SA XT Domain Account

The account for the User Name that you enter during the installation is granted “Full Control” permission to certain folders. This allows SA XT to create temporary files for SA XT sessions. The folders and permissions that SA XT requires for them are described in the sections that follow.

Rational System Architect temporary folders

The SA XT installation creates a folder named "System Architect" in the C:\Program Files\IBM\Rational\System Architect Suite\11.3.1 subfolder. The System Architect folder contains a file named FilePaths.xml. This file contains an element named ProfilePath, which has a single empty attribute named Location. This attribute allows you to specify the path for the temp folder that should be used instead of the default path set for impersonation account, as determined by the operating system. For example, if you set the Location attribute value to “C:\saxt” System Architect creates temporary folders in the “C:\saxt” folder, on each user's machine. If the folder you specify does not exist, SA will create it for you.

```
<FileLocations>
  <ProfilePath Location="C:\SAXT">
  </ProfilePath>
</FileLocations>
```

Rational System Architect XT temporary folders

The web.config file (located in the SA XT installation folder, usually C:\Program Files\IBM\Rational\System Architect Suite\11.3.1\SAXT) contains the TempFolder in the AppSettings Key. This key/value pair enables the administrator to determine the root folder that SA XT uses to create temporary files. The web.config file does not contain a value for the TempFolder key. By default, SA XT uses the folder returned by the operating system.

The example below forces SA XT to use “C:\SAXT” as the root folder for temporary folders:

```
<appSettings>
  <add key="TempFolder" value="C:\SAXT">
</appSettings>
```

Folders and file(s) that require the Full Control permission

SAXT grants the Full Control permission to the following folders:

C:\Documents and Settings\Default User\Local Settings\Application Data\Telelogic\System Architect

C:\WINDOWS\Microsoft.NET\Framework\v2.0.50727\Temporary ASP.NET Files

C:\Windows\Temp

C:\Windows\System32\Config\Systemprofile (or FilePaths.xml ProfilePath Location setting)

C:\Program Files\IBM\Rational\System Architect Suite\11.3.1\System Architect\sa2001.log

C:\Documents and Settings\\ASPNET\Local Settings\Temp (or web.config TempFolder setting)

C:\Program Files\IBM\Rational\System Architect Suite\11.3.1\SAXT\IP\TempImage

Note: If a .NET application has never been run on the SA XT machine, it's possible the following subfolder may not exist:

C:\Documents and Settings\\ASPNET\Local Settings\Temp

If it does not exist, grant permission to other folders first (as described below) then test the website. This will create the missing Temp folder. Afterwards, return to the newly created Temp folder and grant it the Full Control permissions, as described in the section that follows.

Granting Full Control to required folders manually

The Rational System Architect XT installation grants the Full Control permission to the folders described above automatically. However, if you need to grant the permissions to those folders manually, proceed as follows:

1. In Windows Explorer menu, click **Tools >Folder Options >View** tab.
2. Check the **show hidden files and folders** field, if it is not checked, to ensure you can see the folders and files to which you need to grant permission.
3. With Windows Explorer, locate the folder you are granting the **Full Control** permission to, and click on it once to select it.
4. Right-click on the folder and select **Properties > Security** tab.

5. Click the **Add** button, enter the name of the Domain Account, and click **OK**. The account should now appear on the **Group or user names** field.
6. Click once on the account to select it.
7. In the **Permissions for Users** group, click on the **Allow** checkbox for the **Full Control** property.
8. Repeat steps 3-8 for each folder that needs the **Full Control** permission.

Testing the Rational System Architect XT website

If your SA XT website is not working properly, perform the checks below. These checks help you ensure that the SA XT software is running successfully in the IIS server, that it can access encyclopedias on the SQL Server or Oracle servers, and that Windows Desktop Heap allocation are all properly configured.

Checking that SA XT starts on the IIS server

After you make changes to the website, IIS needs to be reset, or restarted, for the changes to take effect. It is recommended that you run the IISReset command from a DOS prompt, as follows.

1. Click **Start > Run**, type **cmd** in the **Open** field, and click **OK**.
2. Type **iisreset**, and press **Enter**.
3. The command above stops and restarts the IIS. When completed, you should receive a confirmation message that **Internet Services Successfully Restarted**. Close the DOS window.
4. Launch Internet Explorer and enter the following URL:
<http://<machinename>/saxt>
5. If the Rational System Architect XT Login page is displayed, close Internet Explorer. Installation was successful.

On some servers, you may need to run SA XT manually prior to using SA XT. On these servers, a registry update may occur when SA XT is run for the first time on a clean machine. To ensure SA XT starts on the server, navigate to the SA installation folder, usually C:\Program files\IBM\Rational\System Architect Suite\11.3.1\System Architect, and double-click on sa2001.exe. SA XT does not present a UI when started in this manner. However, you can see if SA XT started successfully by looking in the Windows Task Manager. If started, you will see a process running for SA2001.exe. To

shut down the SA XT session, select sa2001.exe process and click on End Process.

Adding DCOM Rights to Impersonation account and INTERACTIVE Group

When the Rational System Architect XT impersonation account is not a local administrator on a Windows 2003 or a Windows XP machine, you may receive an 'Error starting SA2001' message. If so, you may need to set DCOM permissions manually for the impersonation account and the INTERACTIVE group as follows:

1. Have users who are logged onto Rational System Architect XT log off and shut down the application.
2. Click Start> Programs> Control Panel > and select Administrative Tools.
3. Click on Component Services, and expand the following nodes: Component Services> Computers> My Computer.
4. Click on the **DCOM Config** node and expand it.
5. Find **SA2001.Lexus**, right-click on it, and select **Properties**.
6. Click on the **Security** tab.
7. Under **Launch and Activation Permissions**, click on **Customize** and on the **Edit** button. In the **Launch Permission** dialog, the impersonation account and the **INTERACTIVE** Group must be added to the list of **Group or user names** field.
8. Click **Add**, select the impersonation account and the **INTERACTIVE** Group, and click **OK**.
9. In the **Security** tab, make sure that the impersonation account and the **INTERACTIVE** group have **Allow** set for all four permissions.
10. Click **OK** twice and exit the **Component Services**.
11. Restart Rational System Architect XT.

Checking that SA XT can access encyclopedias on a server

To work properly, SA XT must be able to access the SQL Servers or Oracle servers through the Impersonation Account. Use the steps that follow to confirm that SA XT can access those servers to publish the encyclopedias within them for SA XT clients.

1. Go to the url for the Rational System Architect XT website (e.g. <http://<machinename>/SAXT>), as determined by your System or Rational System Architect XT Administrator. On the initial Login page, enter values in the numbered fields. Each step determines the options that are available in the subsequent step.
2. Select the Server Type.
3. In the Server Name field, type in the server name and press the Enter key. Each server that you connect to successfully will be added to the list of servers (in a cookie), and you can click on the drop-down to select them on subsequent logins
4. Select an encyclopedia from the Encyclopedia Name field. Rational System Architect XT checks whether the encyclopedia you select contains a Workspace.
5. If it contains a Workspace, you are guided to the next step, which is to select a Workspace from the Workspace Name field. Note that 'baselined' Workspaces are read-only, and you can only login to them in Reader mode.
6. If it does not contain a Workspace, the Workspace Name field is disabled and you are guided to select the login mode.
7. Select the login mode.
8. Reader - Grants you read-only access to repository information, and lets you create queries and run reports.
9. Updater - Grants you read and update access to repository information. You can add definitions, edit existing definitions, and build report queries. This option is only enabled if you have permission to update the encyclopedia, as determined by an Administrator using Rational System Architect Catalog Manager.
10. Optionally, click the Remember Selection checkbox for Rational System Architect XT to remember the options you selected the next time you login.
11. Click Login. This takes you to Rational System Architect XT home page.

Windows Desktop Heap allocation

The SA XT installation sets the Windows registry to allocate enough space for twelve concurrent users. By default, each session of SA XT uses up to 37 KB of a single non-interactive Windows Desktop Heap. The SA XT installation does not change this setting, but you can change it as necessary as describe below.

In Windows, the amount of Desktop Heap available can be modified in the following registry subkey:

```
HKEY_LOCAL_MACHINE\System\CurrentControlSet\Control\Session
Manager\SubSystems\Windows
```

The default value for this subkey usually looks like the following:

```
%SystemRoot%\system32\csrss.exe ObjectDirectory=\Windows
SharedSection=1024,3072,512 Windows=On SubSystemType=Windows
ServerDll=basesrv,1 ServerDll=winsrv:UserServerDllInitialization,3
ServerDll=winsrv:ConServerDllInitialization,2 ProfileControl=Off
MaxRequestThreads=16
```

The SharedSection entry in this subkey controls the number of KBs allocated to each of three different types of Desktop Heaps. SA XT uses the third value (512) in the SharedSection. In this example, the system will allocate 512 Kb of space for all the SA XT sessions to share, which will allow 12 sessions of SA XT to be run concurrently.

$$512 / 37 - 1 = 12$$

Modifying this value can impact other applications running on the same machine. Therefore, it is recommended that if you choose to modify the value in this subkey that you first read the following document on the Microsoft website:

<http://support.microsoft.com/default.aspx?scid=kb;EN-US;184802>

The SA XT web.config file (located in the SA XT installation folder, usually C:\Program Files\IBM\Rational\System Architect Suite\11.3.1\SAXT) contains an appSetting entry that must be set to match the value in the registry. The key MaxDesktopHeap should have its value set to the same value specified in the registry. This web.config entry allows SA XT to ensure that users do not attempt to start sessions that would cause this allocation to be exceeded.

```
<appSettings>
  <add key="TempFolder" value="">
  <add key="MaxDesktopHeap" value="512">
</appSettings>
```

If you use the SA XT Web Service feature, it will be allocated its own instance of the

non-interactive Windows Desktop Heap. All specifications described above for SA XT also apply to SA XT Web Service. The SAXTWebService web.config file also contains an appSetting entry that must be set to match the value in the registry. The key “MaxDesktopHeap” should have its value set to the same value specified in the registry. This web.config entry allows SAXTWebService to ensure that users do not attempt to start sessions that would cause this allocation to be exceeded.

```
<appSettings>  
  <add key="MaxDesktopHeap" value="512"/>  
</appSettings>
```

Adding encrypted security to the Impersonation Account

The process described in this section is optional. Its purpose is to enable you to add a greater level of security to the SA XT Impersonation Account (also known as the Domain Account). By default, the account's ID and Password, as configured in web.config file are stored in clear text (in the web.config file), which is not as secure as encrypted text (see "Edit the web.config file" on page 53). Microsoft provides the ASP.NET Encryption Tool, which lets you encrypt the id and password values, making them more secure.

You can download the encryption tool, along with instructions on how to use it, from the following url:

<http://support.microsoft.com/default.aspx?scid=kb;en-us;329290>

Securing the Impersonation Account is a three-phase process, described in the following sections.

1 - Updating the Windows registry

Before performing this procedure, you must back up the registry and have a restore procedure if a problem occurs. This is particularly important because securing the Impersonation Account modifies the Windows registry.

To run the ASP.NET Encryption tool, proceed as follows:

1. Click **Start > Run**, type **cmd** in the **Open** field, and click **OK**.
2. Go to the folder into which you downloaded and unzipped the **aspnet_setreg.exe** file.
3. Type the following command, substituting the "domain\username" and "password" values with your actual values:

```
Aspnet_setreg -k:SOFTWARE\saxt\identity -u:domain\username -p:password
```

4. Press the **Enter** key. The following keys are created in the registry:

```
HKEY_LOCAL_MACHINE\SOFTWARE\saxt\identity\ASPNET_SETREG,usernameName  
HKEY_LOCAL_MACHINE\SOFTWARE\saxt\identity\ASPNET_SETREG,password
```


2 - Updating the web.config file

Once the registry has been updated, as described above, you must update the Identity element of the web.config file to reflect the values created for this account. The web.config file is located in the installation folder, usually C:\Program Files\IBM\Rational\System Architect Suite\11.3.1\SAXT folder. You must modify the Identity element to appear exactly as shown here, including letter case:

```
<identity impersonate="true"
  userName="registry:HKLMSOFTWARE\saxt\identity\ASPNET_SETREG,username"
  password="registry:HKLMSOFTWARE\saxt\identity\ASPNET_SETREG,password"/>
```

3 - Granting permission to the Aspnet_wp.exe process

You must then make sure to grant read permissions to the Aspnet_wp.exe process account, which is usually <machinename>\ASPNET, as follows:

1. Click **Start** > **Run**, type **regedit** in the **Open** box, and click **OK**.
2. Expand the HKEY_LOCAL_MACHINE > SOFTWARE > SAXT > identity
3. Right-click **ASPNET_SETREG** and select **Permissions**.
4. Click **Add**. In the dialog box that opens, add the object name based on the servers operating system, as follows:

If the server is on Windows XP, type

```
<machinename>\ASPNET
```

If the server is on Windows Server 2003 (which runs IIS 6.0), type:

```
<machinename>\NetWorkService
```

5. Click **OK**.
6. On the **Security** tab, check on **Read** permission to the account in the step above, and click **OK**.
7. Close the Registry Editor.

Adding encrypted security to Oracle authentication

The information in the *connectionStrings* section can be encrypted with standard Microsoft utilities. The section below provides a summary of Machine-Level Key encryption method, which is one of the various methods available. You can find the complete text for this encryption method at the following Microsoft page:

http://msdn2.microsoft.com/en-us/library/ms998283.aspx#paght000006_step2.

The process described below can be used to encrypt the web.config of SA XT or SA XT Web Service.

Encrypting Oracle Authentication with Machine-Level Key:

1. Click **Start > Run**, type **cmd** in the **Open** field, and click **OK**.
2. Go to the folder that contains the Microsoft **aspnet_regiis** utility and execute the following command:

```
C:\WINDOWS\Microsoft.NET\Framework\v2.0.50727>aspnet_regiis -pef  
"connectionStrings" "C:\Program Files\IBM\Rational\System Architect  
Suite\11.3.1\SAXT"
```

You should receive the following message if the utility was successful:

```
Encrypting configuration section...  
Succeeded!
```

When you use the Machine-Level Key encryption, the RSA machine key containers are stored in the following folder:

```
C:\Documents and Settings\All Users\Application  
Data\Microsoft\Crypto\RSA\MachineKeys
```

The SAXT impersonation account needs read access to the file created in the folder above. To grant the required access rights proceed as follows:

3. Click **Start > Run**, type **cmd** in the **Open** field, and click **OK**.
4. Go to the folder that contains the Microsoft **aspnet_regiis** utility. Substituting the “domain” and “user” values below with your actual “domain” and “user” names,

execute the following command:

```
C:\WINDOWS\Microsoft.NET\Framework\v2.0.50727>aspnet_regiis -pa  
"NetFrameworkConfigurationKey" "domain\user"
```

You should receive the following message if the utility was successful:
Adding ACL for access to the RSA Key container...
Succeeded!

Decrypting Oracle Authentication with Machine-Level Key :

To decrypt the *connectionStrings* section of the web.config file proceed as follows:

1. Click **Start > Run**, type **cmd** in the **Open** field, and click **OK**.
2. Go to the folder that contains the Microsoft **aspnet_regiis** utility and execute the following command:

```
C:\WINDOWS\Microsoft.NET\Framework\v2.0.50727>aspnet_regiis -pdf  
"connectionStrings" "\\program files\ibm\rational\system architect suite\saxt"
```

You should receive the following message if the utility was successful:

```
Decrypting configuration section...  
Succeeded!
```

When using Machine-Level Key encryption the RSA machine key containers are stored in the following folder:

```
C:\Documents and Settings\All Users\Application  
Data\Microsoft\Crypto\RSA\MachineKeys
```

To remove the access rights given to the SAXT impersonation user, switch to the folder proceed as follows:

3. Click **Start > Run**, type **cmd** in the **Open** field, and click **OK**.
4. Go to the folder that contains the Microsoft **aspnet_regiis** utility. Substituting the “domain” and “user” values below with your actual “domain” and “user” names, execute the following command:

```
C:\WINDOWS\Microsoft.NET\Framework\v2.0.50727>aspnet_regiis -pr  
"NetFrameworkConfigurationKey" "domain\user"
```

You should receive the following message if the utility was successful.

```
Removing ACL for access to the RSA Key container...  
Succeeded!
```

You must restart IIS after updating the ACL

5. Click **Start > Run**, type **cmd** in the **Open** field, and click **OK**.
6. Type **IISReset**.

You should receive the following message if the utility was successful.

```
Attempting stop...  
Internet services successfully stopped  
Attempting start...  
Internet services successfully restarted
```

Registering the .NET Framework

The Rational System Architect XT Installation Wizard automatically installs Microsoft's .Net Framework. Perform the steps below if you need to verify whether the ASP.NET version 2.0 ISAPI filter have been set up correctly.

1. Click **Start > Settings > Control Panel > Internet Information Services**.
2. Expand the local computer node (which is usually indicated by your computer name) and expand **Web Sites**.
3. Right click the **Web Sites** folder and select **Properties**.
4. On the ISAPI Filters tab, make sure the list contains an entry for ASP.NET_2.0.50727.42 (if the .NET 2.0 Framework has been installed). If this is present, it means that ASP.NET has been installed correctly, and that you can exit IIS.

If ASP.NET is not present, it is possible that the .NET Framework has not been installed, or that IIS was installed after the .NET Framework. If IIS was installed after the .NET Framework, there may be a problem with script maps, which you can repair with the ASP.NET IIS Registration tool. Typically, the tool (Aspnet_regiis.exe) is located in
C:\windows\Microsoft.NET\Framework\v2.0.50727. However, before running this tool, you should consult with your Systems Administrator and carefully read the documentation at the following Microsoft website:

http://msdn.microsoft.com/library/default.asp?url=/library/en-us/cptools/html/cpgrfaspnetiisregistrationtoolaspnet_regiisexe.asp

For SA XT, in a test environment where IIS was installed after the .NET Framework, the Registration tool was used with the following command:

```
C:\windows\Microsoft.NET\Framework\v2.0.50727->aspnet_regiis -ir
```

This installed ASP.NET version 2.0.50727 without updating all script maps. After installing SA XT, the following command was run:

```
C:\windows\Microsoft.NET\Framework\v2.0.50727->aspnet_regiis -s  
W3SVC/1/ROOT/SAXT
```

This installed ASP.NET version 2.0.50727 at the specified application root and its subfolders. All existing script maps in the specified path and below were updated.

For the SA XT Web Service add-on product, the Registration tool was run with the following command:

```
C:\windows\Microsoft.NET\Framework\v2.0.50727->aspnet_regiis -sW3SVC/1/ROOT/SAXTWebService
```

This updated all existing script maps in the specified path and below.

Enabling Rational System Architect XT Web Service add-on product

The Rational System Architect XT installation automatically installs and configures the SA XT Web Service. The service is enabled with the purchase of a license (see pg. 42 for licensing information).

Configuring the SA XT Web Service

If you need to verify or manually configure the SA XT Web Service, proceed as follows:

1. Click Start> Settings> Control Panel> Administrative Tools, and click on Internet Information Services. This launches the IIS console.
2. Expand the **Local Computer** node (which is usually indicated by your computer name).
3. Right-click on the **Default Web Site** node and select **New> Virtual Directory...**
4. Click Next on the Virtual Directory Creation Wizard.
5. On the **Virtual Directory Alias** screen enter **SAXTWebService** in the **Alias** text field and press **Next**.
6. On the **Web Site Content Directory** dialog enter the folder where SA XT Web Service is installed (usually C:\Program Files\IBM\Rational\System Architect Suite\11.3.1\SAXTWebService), or click **Browse** to select it, and click **Next**.
7. In the **Access Permissions** dialog, select **Read** and **Run scripts**, and click **Next**.
8. Click Finish on the final dialog of the Virtual Directory Creation Wizard.

Verifying the SA XT Web Service properties

If you purchased the SA XT Web Service, and want to verify it is properly configured, or wish to customize settings, perform the tasks in sections describe below. To verify and configure most SA XT website properties, you need to launch the IIS serve as follows:

1. Click on Start > Settings > Control Panel > Administrative Tools > and select Internet Information Services.
2. Expand the **local computer** node. This is usually indicated by your computer name, for example ComputerName (local computer).
3. Expand Web Sites and Default Web Site nodes.
4. Right click on the new **SA XTWebService** website and select **Properties**.

Checking and configuring ASP.NET mapping

1. On the **Virtual Directory** tab, click the **Configuration...** button.
2. On the **Mappings** tab, locate the **.asmx** entry in the **Extension** column.
3. The **Executable Path** column for this entry should display

C:\Windows\Microsoft.NET\Framework\v2.0.50727\aspnet_isapi.dll.

If the **.asmx** entry appears and it contains values above for the **Executable Path**, click **OK** and go to the “Set directory security” section below.

If it does not contain the values above, then SA XT Web Service was not mapped to the correct version of ASP.NET. In this case, click **Cancel** to return to the **Virtual Directory** tab. You need to map the SA XT Web Service as described in the “Registering the .NET Framework” section on page 66.

Setting directory security

1. Click on the **Directory Security** tab.
2. Click Edit in the Anonymous access and authentication control group.
3. Check the **Integrated Windows authentication** checkbox, uncheck all other checkboxes, and click **OK**.
4. Click **OK** in the SA XT Web Service Properties dialog to return to the IIS Admin

tool.

5. Click **File** and select **Exit**.

Editing the SA XT Web Service web.config file

Rational System Architect XT creates an Impersonation Account for the SA XT Web Service from the User Name and Password that you enter during the installation. You can change that User Name and Password in the web.config file (see “Editing the web.config file” on page 53).

Other customizations you can apply to the web.config file of SA XT Web Service include the following:

AppLogging - if set to "true" will cause SA XT Web Service to messages to the application event log.

```
<add key="AppLogging" value="false"/>
```

SessionTimeout controls the idle time in minutes before the session is destroyed. This value is only used if the CheckSessionTimer is greater than 0.

```
<add key="SessionTimeout" value="20"/>
```

CheckSessionTimer is the sleep time in minutes between the session idle checks. A value of "0" will prevent the timer from starting, leaving the session to run until the EndSession method is called.

```
<add key="CheckSessionTimer" value="20"/>
```

You can also add the <connectionStrings> key to enable access to Oracle encyclopedias using Oracle authentication (See pg. 54).

Checking folder permissions for the SA XT Web Service Domain Account

If the Domain Account established for SA XT Web Service is different than the account used for SA XT will need the same permissions on the folders described in the “Folders and file(s) that require the Full Control permission” (pg. 56).

The SA XT Web Service web.config file contains an appSetting that allows the administrator to control the folder used by the SA XT Web Service for temporary files. The following example will force the SA XT Web Service to use the C:\SAXTWebService folder:


```
<appSettings>
  <add key="TempFolder" value="C:\SAXTWebService">
</appSettings>
```

By default, the web.config file does not contain a TempFolder value. Therefore, unless you change it, SA XT Web Service uses the folder set by the operating system.

Testing the SA XT Web Service feature

The Rational System Architect XT Web Service provides a test page, SAXTWebService.asmx, which confirms your service has been configured properly. The page also lists the operations made available through the Web Service. Each operation listed in the test page links to a page where you can test the operation and view sample code. Since SA XT Web Service uses complex data types, you cannot test the methods from this page. After installing and configuring SA XT Web Service modules, test it as follows:

1. Click **Start > Run**, type **cmd** in the **Open** field, and click **OK**.
2. Type **iisreset**, and press **Enter**. This stops and restarts the services, then returns a confirmation message that **Internet Services Successfully Restarted**.
3. Close the DOS window.
4. Launch Internet Explorer and enter the following URL:

<http://<machinename>/SAXTWebService/SAXTWebService.asmx>

Accessing Help for Rational System Architect XT and the Web Service

The Rational System Architect XT Web Service feature does not provide a user interface, and therefore does not provide a help system. However, you can find a summary of the Web Service modules in Rational System Architect XT's help system. You can access this directly from SA XT. You can also access the Help manually by clicking on the **default.htm** file in the SA XT installation folder (usually C:\Program Files\IBM\Rational\System Architect Suite\11.3.1\SAXT\Help).

Uninstalling Rational System Architect XT

Because of a known issue between the interaction of the licensing software and the ASP.NET service in Microsoft Internet Information Services (IIS), a problem can occur when you uninstall Rational System Architect XT. To prevent this problem from occurring, follow the procedure below when you uninstall the application:

1. Inform users logged onto any applications being hosted on the same IIS server as Rational System Architect XT that the server will be taken down when you uninstall the application.
2. From the IIS console, stop the IIS service.
3. Uninstall Rational System Architect XT. Navigate to the Add or Remove Programs utility from the Control Windows Panel. When the process completes, you should also delete the following folders:

```
C:\Program Files\IBM\Rational\System Architect Suite
C:\Windows\Microsoft.NET\Framework\v2.0.50727\Temporary
ASP.NET\SAXT
C:\Windows\Microsoft.NET\Framework\v2.0.50727\Temporary
ASP.NET\SAXTWebService
(if you receive a 'file in use' message when attempting to delete
these directories, run the IISReset utility and try deleting them
again.)
```

4. From the IIS console, restart the IIS service.

Note: while restarting the service, an error may occur. You can ignore that error because other applications are not affected, and the ASP.NET service will be restarted once the IIS service is started.

Installing SA Catalog Manager

3

Introduction

Rational System Architect version 11 or higher provides access control for shared, enterprise-level encyclopedias administered and enforced by IBM Rational Rational System Architect Catalog Manager.[™]

This chapter provides you with instructions on how to create a catalog, and to implement access control. The chapter is partitioned into sections that cover different scenarios of installing the product.

- Overview of Access Control with SA Catalog Manager
- 1 - Acquire a server dedicated to Rational System Architect Encyclopedias
- 2 - Install Rational System Architect and SA Catalog Manager
- 3 - Set up User rights to Encyclopedias
- 4 - Grant 'SA Permissions' to Users within an Encyclopedia

Overview of Access Control with SA Catalog Manager

Rational System Architect Catalog Manager is utility that provides role-based, enterprise-level access control to Rational System Architect encyclopedias. Access control is enforced by a catalog. You attach to the catalog encyclopedias to which you want to control access. In SA Catalog Manager, you create Users, assign encyclopedias to them, and then assign Users one or more Roles that they can perform on catalogued encyclopedias. SA Catalog Manager also lets you to control the Rational System Architect menus that are enabled, and the macros that can be executed by a role.

SA Catalog Manager is automatically installed when you install Rational System Architect and Rational System Architect XT. If you do not want to install SA Catalog Manager on your computer, you can perform a custom SA or SA XT install and remove SA Catalog Manager from products to install.

Enterprise Catalogs

An enterprise catalog is an SQL Server database that holds information about other databases (i.e., Rational System Architect encyclopedias) on the same server, and that by having encyclopedias attached to it, can control who can access those encyclopedias, and what they can do in them. In Oracle, the catalog is a schema within the database.

There is a one-to-one correspondence between a server and a catalog, and one catalog can control access to multiple encyclopedias. SA Catalog Manager also controls permissions to the catalog database, enabling you to assign the Administrator role to other users. This lets you relegate some or all catalog-related tasks to others. However, as the SA Catalog Manager installer, you have ultimate control over catalogs and by extension, to all the encyclopedias you attached to them.

Overall Steps for implementing Access Control via SA Catalog Manager

The installation wizards for both Rational System Architect and Rational System Architect XT install SA Catalog Manager. It does not matter from where you run SA CM, as long as you do possess the required permissions. The basic steps for installing SA Catalog Manager and then implementing access control via SA Catalog Manager are as follows:

Acquire a SQL Server installation or an Oracle database installation for SA encyclopedias (A dedicated server is ideal for best performance but it is not a requirement).

Install Rational System Architect or Rational System Architect XT, both of which install SA Catalog Manager by default:

a. If using a Citrix or Terminal Server installation, install SA and SA Catalog Manager to the Terminal Server or CITRIX machine. In this scenario, it is recommended, though not required, that you have a fast connection (e.g. 1 Gb) to the SQL Server or Oracle server. Check the SA XT Readme file for minimum requirements.

OR

b. Install SA to each person's machine and designate one machine (the Rational System Architect administrator's machine) as the one licensed to run SA and SA Catalog Manager.

These installation scenarios are both represented by machine C in the figure shown in the "SA XT installation overview" section in chapter 1 of this guide.

Set up user rights to the server and its encyclopedias.

Use SA Catalog Manager to create a catalog and grant permissions for access within each encyclopedia based on roles. These can be thought of as 'Rational System Architect (SA)' permissions.

1 - Acquire a server dedicated to Rational System Architect Encyclopedias

The first step in the process is to acquire a server that will be used to house Rational System Architect encyclopedias.

Server Requirements

Rational System Architect supports the following versions of these servers/databases for use as the underlying repository that you build encyclopedias on:

- SQL Server 2008 and SQL Server Express 2008
- SQL Server 2005 and SQL Server Express 2005
- Oracle 10g

Important server recommendation

It is recommended that the SQL Server or Oracle database server that you acquire will be used exclusively for Rational System Architect encyclopedias. It is not advised to share a SQL Server or Oracle installation with other software applications. There are a number of reasons for this – first, SA users will need rights to create and modify databases on the server, rights that may not normally be granted to the typical database user. Second, if the server is being used for other database activity, SA performance will be affected.

2 - Install Rational System Architect and SA Catalog Manager

A. Install Rational System Architect

The complete installation instructions for Rational System Architect as described in Chapter 1 of this installation guide. In general, Rational System Architect is typically installed using one of the following strategies:

- Rational System Architect can be installed to a Citrix or Terminal Server environment. If so, then Rational System Architect should be installed to a separate machine from the one that is housing SQL Server or Oracle, but with a fast (1GB) connection between it and that server machine.
- Rational System Architect can be installed to each user's machine and used to access encyclopedias on the server via a fast network. If so, the network must be of sufficient bandwidth to enable many concurrent users (at least 100 Mb connections with a throughput of 40-60 Mbps for upstream and downstream throughput). Please see the Readme.htm file for more information on network throughput requirements and recommendations.

B. Install SA Catalog Manager as part of Rational System Architect Install

By default, SA Catalog Manager is installed by the Rational System Architect (and Rational System Architect XT) installation. You may optionally turn off the SA Catalog Manager installation if you choose Custom Install while running the Rational System Architect installation wizard.

However, only users with a valid license to use SA Catalog Manager can run the program. The SA Catalog Manager license is an option in the license.dat file. Typically, an organization should have the designated Rational System Architect administrator granted a license to run SA Catalog Manager, so that only the administrator can grant access control for other users on encyclopedias.

Where to install SA Catalog Manager

If running Rational System Architect in a Terminal Server or Citrix environment, then you typically install SA Catalog Manager to the Terminal Server machine along with Rational System Architect (which again, happens by default). The Rational System Architect administrator then uses SA Catalog Manager on the Terminal Server machine to control access to encyclopedias on the SQL Server or Oracle machine.

If running Rational System Architect in a network configuration where Rational System Architect is installed on each user's machine, then SA Catalog Manager is installed on the designated Rational System Architect administrator's machine, which is typically the one licensed and used to control access to encyclopedias housed on the SQL Server or Oracle machine on the network.

Installing SA Catalog Manager

1. Insert the Rational System Architect DVD (or double click on the Rational System Architect executable downloaded from the IBM Rational site). The auto-run interface is launched.
2. Use the Installation Wizard to guide you through the entire Rational System Architect installation.
3. When you encounter a dialog that asks if you would like a Complete or Custom Installation, either leave the Complete Installation check box selected, or make sure SA Catalog Manager is selected in the sub-dialog if you choose Custom Installation.

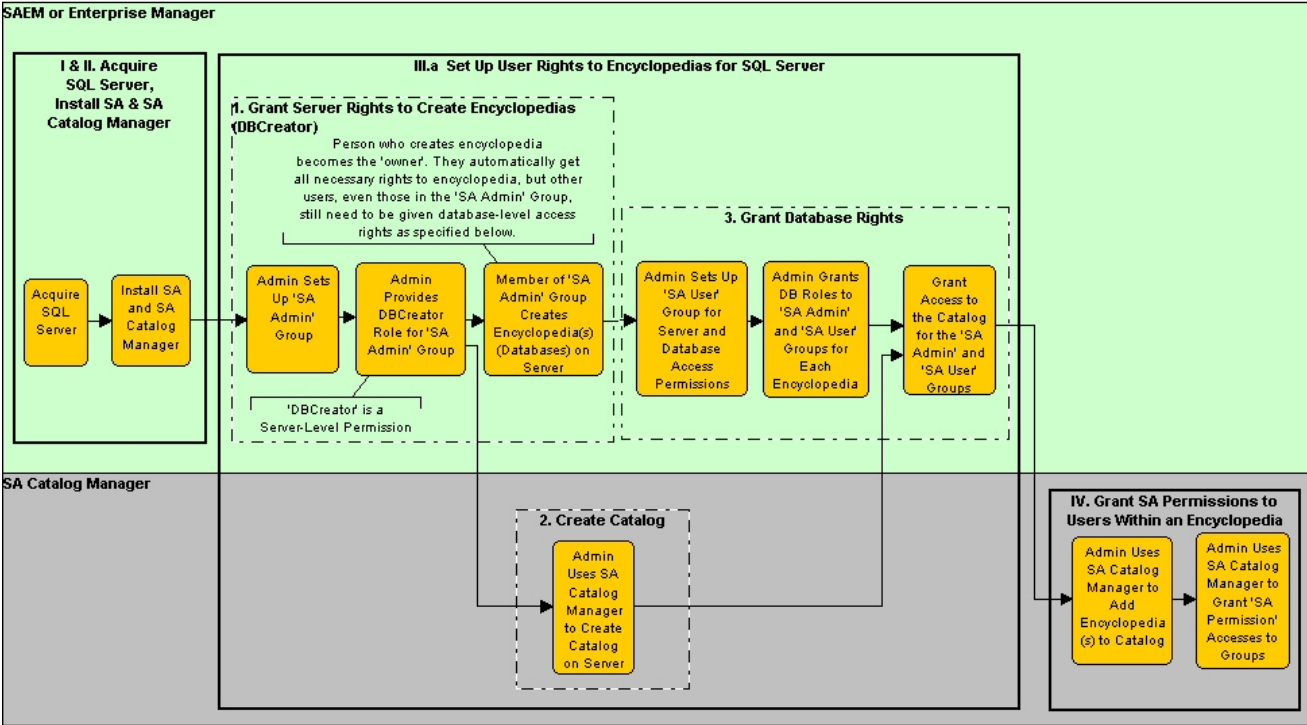
The SA Catalog Manager installation does not create a catalog. It cannot assume you want to create one, or determine where to create one. On the first run after installation, SA Catalog Manager prompts you whether to search for servers, and then prompts you whether you would like to create a catalog on one of the servers that is found.

3 - Set up User rights to Encyclopedias

Users of Rational System Architect Enterprise encyclopedias have their permissions managed by the role they are assigned in SA Catalog Manager. Two main types of Roles can be assigned. One is the Administrator role, and the other a standard role, such as Business Modeler, Data Modeler, and so on. The main difference between these types of roles is that the Administrator role can perform tasks on the catalog (add a user, for example), while the other roles can only perform tasks on encyclopedias. These role types can be classified as the 'SA Admin' and the 'SA User' role; each of them is describe in more detail in the sections that follow.

A. Set up User Rights to Encyclopedias for SQL Server

The process flow diagram below highlights the steps you need to perform to set up user rights to encyclopedias for SQL Server. The next few sections provide written detail for these steps.



1. Grant Server Rights to create Encyclopedias (DBCreator)

On the Server, the System Administrator must provide 'DBCreator' rights to the Group of users that will **create encyclopedias** (an encyclopedia is a database on SQL Server). This is performed using Microsoft SQL Server Enterprise Manager or SAEM for SQL Server. Typically, the System Administrator creates a Group that includes all SA users who will be granted ability to create encyclopedias. The right to create encyclopedias (databases) on the server is not necessarily given to everyone who will be using Rational System Architect – if you did, you might get a proliferation of encyclopedias created. A recommended approach is for administrators to call this Group the 'SA Admin' group. For SQL Server and SQL Server Express, this Group needs to be given the Server Role of System Administrator or DBCreator to create databases (encyclopedias) on the server.

2. Create a Catalog on a SQL Server

It is a good idea to know the server name before creating a catalog. If you don't have the name, then SA Catalog Manager can search the network for you, but this can take a long time to complete, with the possibility that servers behind firewalls may not be found. Knowing the server name makes this procedure complete much faster because you can enter the server name manually and avoid having SA Catalog Manager search the network.

1. The first time you run SA Catalog Manager it informs you that no catalogs are registered to you on your computer, and it asks whether you would like to search for catalogs.

Click **Yes**, if you do not know which servers are available. This will cause SA Catalog Manager to search all servers that your computer is connected to. Some servers may not be found if they are hidden or protected by a firewall. For servers such as these, you may need to enter their path and names manually.

OR

Click **No**, which will let you create the catalog on a server that you specify. You should know the server path and name on which you will create the catalog.

2. Enter the path and name of the server on which to create the catalog or select one from the list. Regardless of your choice to the above step, a second dialog is presented, where you specify the server on which to create a Catalog. The dialog contains a combination text and drop-down field, in which you can type in the server name and path, or click the drop-down arrow to select a server from a list (this method searches for servers that you're connected to and can take a long time

in large scale environments).

3. Click **OK**.

3. Grant Database Rights

For each encyclopedia (SQL Server database), your System Administrator must provide rights to the Group (or each individual) that will **use** the encyclopedia – in other words open it, and create or modify diagrams and definitions within it.

Rights for 'SA User' Group

For users to be able to use an encyclopedia, the Administrator must grant them the following Database Access on **each** encyclopedia (database) within which they will be working:

- db_datareader and
- db_datawriter.

These rights are granted using SQL Server Enterprise Manager or SQL Server Express. Typically, the System Administrator creates a Group that includes all SA users who will be granted ability to work in encyclopedias, and then grants db_datareader and db_datawriter database access for this Group on each encyclopedia.

Rights to SA Catalog Manager's TelelogicEnterpriseCatalog Database

When you create a catalog with SA Catalog Manager, you actually create a special database that carries a triplet of information (access permissions per role per encyclopedia) that allows users to access information in encyclopedias based on their role. This database is called the TelelogicEnterpriseCatalog database. All users must be granted the following rights to this TelelogicEnterpriseCatalog database to work in Enterprise encyclopedias (those put under access control):

- db_datareader
- Only Administrators of the catalog need the db_datawriter permission.

The user Group (or all users) must also be given db_datareader, db_datawriter, and EXECUTE permissions for the following stored procedures for the encyclopedia database to be allowed full access to the encyclopedia:

CREATESNAPSHOT	GETHISTORYLOGGINGSTATUS
ENTITYEXISTSBYID	LOGENTITYHISTORYUPDATE
LOCKENTITYBYID	LOGFILESHISTORYUPDATE
GETNEXTID	PURGEHISTORY
GETFILESIZE	SAVEAUDITSETTINGS
DELETEBYID	SAVECHANGECONFIG
DELETEBYIDS	

Note: To view and access encyclopedias that are attached to a catalog on SQL Server, you need the VIEW SERVER STATE permission, in addition to the above. This enables the sp_lock function, needed to ensure only one person at a time can open and update the catalog. An administrator can grant VIEW SERVER STATE permission in the master database by executing the following query:

GRANT VIEW SERVER STATE TO <login>, where <login> is an actual value.

Rights for 'SA Admin' Group – Users who can create Encyclopedias

All users who can create encyclopedias on the server or have created encyclopedias in the past must be given the following rights on the TelelogicEnterpriseCatalog database (the 'catalog'):

- db_ddladmin,
- db_datareader and
- db_datawriter.

The db_ddladmin right enables users to convert an encyclopedia from one version of Rational System Architect to the next automatically. Between versions, the stored procedures for Rational System Architect may change to improve performance. Because of this, it becomes necessary for the owner of an encyclopedia (the one who created it) to be the first one to open it with the new version, and that person needs db_ddladmin rights to the encyclopedia and to the TelelogicEnterpriseCatalog database.

The user Group (or all users) must also be given db_ddladmin, db_datareader, db_datawriter, and EXECUTE permissions for the following stored procedures for the encyclopedia database to be allowed full access to the encyclopedia:

CREATESNAPSHOT	GETHISTORYLOGGINGSTATUS
ENTITYEXISTSBYID	LOGENTITYHISTORYUPDATE
LOCKENTITYBYID	LOGFILESHISTORYUPDATE
GETNEXTID	PURGEHISTORY
GETFILESIZE	SAVEAUDITSETTINGS
DELETEBYID	SAVECHANGECONFIG
DELETEBYIDS	

Additionally, a user needs Select, Insert, Update, and Delete rights on the following tables of the TelelogicEnterpriseCatalog:

CATALOGPERMISSION	ROLE
ENCYCLOPEDIA	ROLESUMS
ENCYPERMISSION	USERENCYROLE
ILAC_DEFAULTCATALOGGROUPS	USERGROUPS
ILAC_DEFAULTENCYGROUPS	VERSION
OPTIONS	XTUSERENCYXML
PERMISSION	USER

Note: To view and access encyclopedias that are attached to a catalog on SQL Server, you need the VIEW SERVER STATE permission, in addition to the above. This enables the sp_lock function, needed to ensure only one person at a time can open and update the catalog. An administrator can grant VIEW SERVER STATE permission in the master database by executing the following query:

GRANT VIEW SERVER STATE TO <login>, where <login> is an actual value.

B. Set up User Rights to Encyclopedias for Oracle

In Oracle, like encyclopedias, the catalog is schema, which is named the TelelogicEnterpriseCatalog. The overall steps for setting up access to the TelelogicEnterpriseCatalog in Oracle are as follows:

1. Grant Access Rights for Oracle

For users to edit an encyclopedia in an Oracle server, they must have Select, Insert, Update and Delete rights on the following tables, which Rational System Architect creates automatically:

ENTITY	RELATIONSHIP
ERROR_LOG	CRITICALREGION
FILES	SINGLETHREAD
IDGENERATOR	FILES_HISTORY
SAPROPERTIES	ENTITY_HISTORY
	ENTITY_FLAGS

Additionally, to edit an encyclopedia in Oracle, a user also needs the Execute on the following stored procedures:

CREATESNAPSHOT	GETHISTORYLOGGINGSTATUS
ENTITYEXISTSBYID	LOGENTITYHISTORYUPDATE
LOCKENTITYBYID	LOGFILESHISTORYUPDATE
GETNEXTID	PURGEHISTORY
GETFILESIZE	SAVEAUDITSETTINGS
DELETEBYID	SAVECHANGECONFIG

Additionally, a user needs Select, Insert, Update, and Delete rights on the following tables of the TelelogicEnterpriseCatalog:

CATALOGPERMISSION	ROLE
ENCYCLOPEDIA	ROLESUMS
ENCYPERMISSION	USERENCYROLE
ILAC_DEFAULTCATALOGGROUPS	USERGROUPS
ILAC_DEFAULTENCYGROUPS	VERSION
OPTIONS	XTUSERENCYXML
PERMISSION	USER

2. Create a Catalog on the Oracle Server

1. The first time you run SA Catalog Manager it informs you that no catalogs are registered to you on your computer, and it asks whether you would like to search for catalogs. Click **No**, because SA Catalog Manager cannot search for catalogs on Oracle servers.
2. In the dialog presented, enter the name of the Oracle server on which you want to create the catalog.
3. Click **OK**.

4 - Grant 'SA Permissions' to Users within an Encyclopedia

This section details how to set up access control for users based on their role on a per-encyclopedia basis. The section assumes that you have already created a catalog, per instructions provided in section II.3 of this chapter.

You create and use one and only one catalog per server, whether it is a SQL Server, SQL Server Express, or Oracle server. One catalog controls access to multiple encyclopedias on the same server. A catalog on one server cannot control access to encyclopedias on a different server.

Overall steps to create a Catalog and implement Access Control

Once again, to follow the steps of this section, you must first create a catalog on the server where the encyclopedias to be brought under access control reside. The steps to create a catalog are specified in section II.3 of this chapter.

Afterwards, and in no particular order, you need to attach encyclopedias to the catalogs, create Users, assign Users to encyclopedias, and assign Users one or more Roles, per encyclopedia.

The overall steps to create a catalog and implement access control are as follows:

Create a Catalog on an SQL Server, SQL Server Express, or Oracle Server.

1. Attach Encyclopedias to a Catalog.
2. Add Users to the Catalog.
3. Assign Users to Encyclopedias.
4. Assign Roles to Users.

A. Attach Encyclopedias to an Enterprise Catalog

Attaching an encyclopedia to a catalog makes it ready for you to assign it to Users. There are two methods to attach an encyclopedia. From SA Catalog Manager, you can use the Attach Encyclopedia command. From Rational System Architect, when you create a new encyclopedia, you can select Enterprise Encyclopedia as the type, and choose the option to make the encyclopedia available to other users. Each of these methods is described below.

To attach an encyclopedia in SA Catalog Manager proceed as follows:

1. Right click on the **Encyclopedias** node and select **Attach**.
2. Click the **Select an encyclopedia to attach** drop-down and select an encyclopedia.
3. Click OK.

To create and attach an Enterprise encyclopedia in Rational System Architect:

4. Click File and select Open Encyclopedia.
5. Click the **New** icon.
6. Select the checkbox for **Enterprise encyclopedia**.
7. Continue creating the new encyclopedia by entering your data in these fields:

Connection (specifies the server name, server type and security)

New Encyclopedia name

8. Check the **Allow others to access this encyclopedia** checkbox. This makes your newly created Enterprise encyclopedia appear under the Encyclopedias node in SA Catalog Manager.

B. Create new Users

All new Users or User Groups are given the Read permission to the catalog. This enables them to see encyclopedias of the type Enterprise Encyclopedia in Rational System Architect's Open Encyclopedia dialog. Once you create a User or a User Group, you must assign those Roles to perform on encyclopedias, per encyclopedia.

To create a New User:

1. Right-click on the root node **Users & Groups** and select **New User**.
2. In the **Name** field, enter a user name in the format DomainName\UserName, where DomainName is the name of your network domain, and the UserName is the name you use to log into your Windows operating system.
3. Enter a value no greater than seven characters in the **Audit ID** field. If you exceed this limitation, the value you enter is clipped after the seventh character. Rational System Architect uses the Audit ID to track user activity throughout an encyclopedia.
4. Click **OK**.

C. Assign Users to Encyclopedias

A User that is assigned to an encyclopedia must also be assigned a Role to play on that encyclopedia. If you assign a User to an encyclopedia and shut down SA Catalog Manager before assigning that User a Role on the encyclopedia, the assignment of the User to the encyclopedia is dropped.

The sections that follow described two procedures you need to complete for a User to work on an encyclopedia.

To assign a User to an Encyclopedia:

1. Expand the root Users & User Groups node (click the '+').
2. Right-click on a User and select Copy.
3. Expand the root Encyclopedias node, and beneath it, expand the encyclopedia to which you are assigning the User.
4. Right-click on the encyclopedia you selected in the above step, and select Paste.
5. A node is created for the User that you pasted, and its name is displayed in a blue, italicized font, which denotes the assignment temporary. The User must also be assigned a Role for the assignment to become permanent, as described below.

D. Assign Roles to Users

1. Expand the root Roles node.
2. Right-click on a Role, and select Copy.
3. Right-click on the Users & User Groups node (which should still be expanded and displayed in a blue, italicized font) and select Paste.
4. Note: The blue and italicized font convert to black and normal (i.e., not italicized), denoting that the User has been successfully assigned a Role on the encyclopedia of which he or she is a User.

E. Open Catalogued Encyclopedia in Rational System Architect

The Encyclopedia you attached to the catalog is now subject to access control as administered by SA Catalog Manager. For anyone to open a catalogued encyclopedia in Rational System Architect, they must exist as a User in a catalog, be assigned to the encyclopedia, and be assigned one or more roles on their assigned encyclopedias.

Rational System Architect can open both catalogued and non-catalogued encyclopedias. Catalogued encyclopedias are termed **Enterprise Encyclopedia**, and non-catalogued are termed **Professional**. In Rational System Architect's Open encyclopedia dialog, you can select which type to open by clicking on the **Existing** icon, select the Connection name and a list will be provided with the different encyclopedias that are attached to that server.

1. Start Rational System Architect.
2. Click **Open Encyclopedia** icon, or select it from the **File** menu.

For existing encyclopedias, click the **Existing** icon and select the **Connection**.

For new encyclopedias, click the New icon, then specify a Connection. (see the To create and attach an Enterprise encyclopedia in Rational System Architect section above).

3. Click **OK**.
4. The diagrams, definitions that the user can view, and the menu commands that he or she can execute are all determined by the catalog, as configured by the Network or Rational System Architect Administrator with SA Catalog Manager.

Installing Rational SA and SA XT on same machine

4

Introduction

You can install Rational System Architect and System Architect XT on the same machine. This feature is especially useful for consultants and Systems administrators who want to be able to use all the features of Rational System Architect, and to be able to use the distinct features of the Rational System Architect XT product. Previously, you could not install both products on the same machine.

Overview

When you install Rational System Architect, all available features are installed. This includes Cobol Import, INI File Editor, SA Catalog Manager, SA Compare, SA Publisher SAEM for Oracle and SAEM for SQL Server. It also includes all the help files for those features. Combined, all these features make up the Rational System Architect suite of tools.

When you install Rational System Architect XT, only a subset of the available features is installed, including Rational System Architect SA Catalog Manager, SAEM for Oracle and SAEM for SQL Server. Additionally, some features exclusive to Rational System Architect XT are installed, including Microsoft IIS server components, and a distinct browser-based help system.

Installation Requirements

There are some requirements and restrictions to consider when you install both products on the same machine. Among the requirements are the following:

- You have to install Rational System Architect first, and install Rational System Architect XT second. When you install Rational System Architect XT, it will use the same Rational System Architect installation directory, without prompting you to choose an alternate directory.
- The versions of Rational System Architect and Rational System Architect XT have to be the same. If you attempt to install Rational System Architect XT over a different version than Rational System Architect, the installation cannot be completed.

Among the restrictions are the following:

- You cannot run Rational System Architect while you are running Rational System Architect XT as a server.

Installing Rational System Architect XT over Rational System Architect

When you start the Rational System Architect XT installation, it detects whether Rational System Architect is already installed. If it is installed, and it is the same version as the Rational System Architect XT version you are attempting to install, the install is allowed to proceed. If the installed Rational System Architect version is not the same as the Rational System Architect XT version you want to install, the installation terminates.

To install Rational System Architect XT over Rational System Architect proceed as follows:

1. Run the Rational System Architect XT installation file. The installation process is the same as if Rational System Architect were not installed, except for the important distinction that you cannot select a path. Rational System Architect XT must use the same path because it will install over Rational System Architect incrementally, adding only those components that are not already installed.
2. Complete the installation as instructed by the installation wizard to complete.

Running Rational System Architect when Rational System Architect XT is also installed

Because both applications use the same executable, sa2001.exe, launching that executable from shortcuts or directly from the application folder works differently. When only Rational System Architect is installed, the executable always runs in ‘noisy’ mode, meaning the product is launched with the user interface. However, when you also install Rational System Architect XT on the same machine, clicking on the executable file in the application folder launches Rational System Architect XT in ‘quiet’ mode, without the user interface.

To run Rational System Architect with the user interface, use the shortcuts in the Windows Start menu, or in the Desktop (if you chose to have one created there when you installed Rational System Architect). Those shortcuts contain a parameter in ‘Target’ property to run the application in ‘noisy’ mode, as follows:

```
C:\Program Files\IBM\Rational\System Architect Suite\11.3.1\System Architect\sa2001.exe -enableui
```

There are no shortcuts provided to run Rational System Architect XT in ‘noisy’ mode. However, when only Rational System Architect XT is installed, you can create a shortcut to run it in ‘noisy’ mode by creating a shortcut for it with the parameter above. Normally, Rational System Architect XT runs in ‘silent’ mode

If you choose to uninstall Rational System Architect XT, these shortcuts remain unaffected and Rational System Architect will continue to run with the user interface.

Uninstalling Rational System Architect XT

The installation process for either product works the same as if only one of them were installed. In other words, each product is listed in the Add or Remove Programs dialog of the Windows Control Panel. However, you should consider the following factors when you uninstall Rational System Architect or Rational System Architect XT when both are installed in the same computer:

- If you attempt to uninstall only Rational System Architect, Rational System Architect XT will cease to work properly because common files are deleted. In this scenario, you can continue to uninstall Rational System Architect, but you are advised that you should also Rational System Architect XT.
- When you uninstall Rational System Architect XT, no special information is provided. Even though common files are also deleted in this instance, Rational System Architect will reinstall those files the next time it is started. This is the standard behavior whenever Rational System Architect files are deleted.

- When you need to uninstall both Rational System Architect and Rational System Architect XT from the same computer, the sequence you should follow is to uninstall Rational System Architect XT first, and Rational System Architect second. If you do not follow this recommended sequence, and uninstall the products in the reverse order, the uninstall process displays message prompts stating that Rational System Architect XT will not work after removing Rational System Architect, because they share common components. Furthermore, the reverse sequence leaves some files in the installation path.

Installing the IBM Rational System Architect Cognos Bridge 5

Installation Overview

IMPORTANT: The IBM Rational System Architect Cognos Bridge should be installed by an Administrator on the machine where IBM Cognos or the IBM Cognos Framework Manager are installed, or it can be on a different machine altogether, to facilitate the configuration of the Operational Database Source database. Rational System Architect users do not need to install the IBM Rational System Architect Cognos Bridge to create reports.

The IBM Rational System Architect Cognos Bridge is installed independently from Rational System Architect or IBM Cognos. The installation file installs the SA Cognos Schema Generator and an SA Data Retriever utility that can be on the IBM Cognos server machine, or on another machine. A help file that describes how to use the utilities is also installed.

Optionally, to install the IBM Rational System Architect Cognos Bridge on the same machine where Rational System Architect or Rational System Architect XT, or both are installed, those products must be the same version as the IBM Rational System Architect Cognos Bridge. If the installation finds older versions of Rational System Architect or Rational System Architect XT, it will not install.

Operating System Requirements

- Microsoft Windows XP (with Service Pack 3)
- Microsoft Windows 2003 Standard Edition (with Service Pack 2)
- Microsoft Windows Vista Business Edition (with Service pack 1)
- If User Account Control (UAC) is ON then after completing the installation, you need to run the application by right clicking on the shortcut or the executable and click on “Run As Administrator”, for everything to function properly.
- Microsoft Windows 2008 Standard Edition (with Service Pack 1)

Database supported

- Microsoft® SQL Server 2008

- Microsoft® SQL Server Express 2008
- Microsoft SQL Server 2005®
- Microsoft SQL Server 2005 Express® (SQL Express)

Hardware Requirement

The hardware requirement for the IBM Rational System Architect Cognos Bridge is as follows:

- Administrative privileges on the system (during the installation only).
- Pentium-class PC, 500 MHz or higher, minimum of 256 MB of RAM, Super VGA monitor (with the screen resolution set to at least 800 x 600, small fonts setting).
- Disk space: 250MB during installation and 170 MB after the install is complete.
- The Hard disk requirement for installing the .NET Framework 3.5 through the installer is 450 MB, and 280 MB after installation is completed.

Supported IBM Cognos packages

The supported the IBM Cognos 8.4.1 packages are as follows:

- IBM Cognos 8 Business Intelligence Data Manager 32-bit 8.4.1 Windows English
- IBM Cognos 8 Business Intelligence Modeling 8.4.1 Windows English
- IBM Cognos 8 Business Intelligence Reporting 32-bit 8.4.1 Windows Multilingual
- IBM Cognos 8 Business Intelligence Reporting Quick Start Guide 8.4.1 Multilingual
- IBM Cognos 8 Business Intelligence Data Manager Quick Start Guide 8.4.1 English
- IBM Cognos 8 Supplementary Languages Documentation 8.4.1 Multiplatform Multilingual

Installing IBM Rational System Architect Cognos Bridge

To install the IBM Rational System Architect Cognos Bridge proceed as follows:

1. Double-click on the executable file for IBM Rational System Architect Cognos Bridge to run Installation Wizard.
2. In the **Welcome** screen, click **Next** to begin the installation.

3. Follow the instructions provided in the Installation Wizard.

Silent Installation overview

In addition to the standard installation options, you can also perform a silent installation. The UI and silent installation uses the Microsoft Windows Installer (MSI) technology, enabling you to install the application without entering any data in the dialog boxes.

IMPORTANT: Providing complete information about MSI is beyond the scope of this installation guide. For complete MSI and related information go to the following Microsoft websites:

- For a complete list of command line options for the Windows Installer, see: [http://msdn.microsoft.com/en-us/library/aa367988\(VS.85\).aspx](http://msdn.microsoft.com/en-us/library/aa367988(VS.85).aspx)
- The Windows Installer uses Msiexec. For more information on Msiexec, see: <http://technet.microsoft.com/en-us/library/bb490936.aspx>

Silent Installation requirement

As of this writing, the silent install option for the IBM Rational System Architect Cognos Bridge requires that the Microsoft Windows Installer 3.1 Service and above is installed on the target computer. If it is not, the installer notifies you, and directs you to obtain the Microsoft Windows Installer at:

<http://support.microsoft.com/kb/893803>.

All product options available for silent installation are exposed as public properties that you can set on the Msiexec command line or through custom transform files. The properties are as follows:

Property	Description
LAPAGREE	(string)License Acceptance process and by default it is "No."
COMPANYNAME	By default it picks the name from registry.
USERNAME	By default it picks the name from registry.
INSTALLDIR	Path where the application needs to be installed. By default it is C:\Program Files\IBM\Rational\System Architect Suite\11.3.1\SA-Cognos.

The following is a command line sample for the silent installation (default silent

installation):

```
SA_Cognos_Bridge_11.3.1.3.exe /s /v" /qn LAPAGREE="\Yes\""
```

The following command line sample has a few more options:

```
SA_Cognos_Bridge_11.3.1.3.exe /s /v" /qn LAPAGREE="\Yes\"  
INSTALLDIR="C:\Program Files\SA-Cognos"
```

NOTE: Do not copy and paste the command line values into the command prompt. This may add a white space in the text and prevent the installation from working.

Enabling localized User Interface

You can enable the IBM Rational System Architect Cognos Bridge user interface to German, Japanese, French, or Spanish, as follows:

1. Open the **SASchemaGenerator.exe.config** file, installed in the root directory, for example:
C:\Program Files\IBM\Rational\System Architect Suite\11.3.1\SA-Cognos\
2. Add the entry below in the following section of the file:

```
<configuration>  
<appSettings>  
  <add key="Locale" value="XXX" />
```

Values for XXX can be:

409 = English (This is the default.)

407 = German

411 = Japanese 40C = French

C0A = Spanish

NOTE: "0" is a zero not the letter "O".

3. Save and close the SASchemaGenerator.exe.config file, and restart SA Cognos Schema Generator.

Known install and uninstall issues

Because Rational System Architect, Rational System Architect XT and the IBM Rational Cognos Bridge share components, the sequence in which you install and then uninstall the products could cause issues. The causes and resolutions for these known issues are

listed below.

Known Issue 1: You install the IBM Rational System Architect Cognos Bridge and then install Rational System Architect or System Architect XT on the same machine. If you uninstall the IBM Rational System Architect Cognos Bridge first, Rational System Architect or System Architect XT stops working. The reason is that common files are removed when you un-install the IBM Rational System Architect Cognos Bridge. To resolve this issue, go to Add/Remove Programs and repair Rational System Architect or Rational System Architect XT.

Known Issue 2: You install Rational System Architect or Rational System Architect XT, and then install the IBM Rational System Architect Cognos Bridge on the same machine. If you then uninstall Rational System Architect or Rational System Architect XT, the IBM Rational Cognos Bridge stops working. The reason is that the common files and the SAREstWebservice are removed when you uninstall Rational System Architect or Rational System Architect XT. To resolve this issue, uninstall and then re-install the IBM Rational System Architect Cognos Bridge.

Known Issue 3: You install IBM Rational System Architect Cognos Bridge, then install Rational System Architect, and finds that there are multiple SARESTWebService.exe and SAREstWebService.config files in the IBM Rational System Architect Cognos Bridge installation directory, and in the Rational System Architect installation directory. The reason is that with multiple SARESTWebService.exe and SAREstWebService.config files, the SAREstWebService does not work properly. To resolve this issue, install Rational System Architect first, and then install the IBM Rational System Architect Cognos Bridge. This ensures only one SAREstWebService.config file for the SAREstWebService is installed, in the Rational System Architect installation directory.

IBM Support

Contacting IBM Rational Software Support

If you cannot resolve a problem with the self-help resources, contact IBM® Rational® Software Support.

Note: If you are a heritage Telelogic customer, you can find a single reference site for all support resources at <http://www-01.ibm.com/software/awdtools/systemarchitect/support/>.

Prerequisites

To submit a problem to IBM Rational Software Support, you must have an active Passport Advantage® software maintenance agreement. Passport Advantage is the IBM comprehensive software licensing and software maintenance (product upgrades and technical support) offering. You can enroll online in Passport Advantage at <http://www.ibm.com/software/lotus/passportadvantage/howtoenroll.html>

To learn more about Passport Advantage, visit the Passport Advantage FAQs at http://www.ibm.com/software/lotus/passportadvantage/brochures_faqs_quickguides.html.

For further assistance, contact your IBM representative.

To submit a problem online (from the IBM website) to IBM Rational Software Support: Register as a user on the IBM Rational Software Support website. For details about registering, go to <http://www.ibm.com/software/support/>.

Be listed as an authorized caller in the service request tool.

Other information

For Rational software product news, events, and other information, visit the IBM Rational Software website: <http://www.ibm.com/software/rational/>.

Submitting Problems

To submit a problem to IBM Rational Software Support:

Determine the business impact of the problem. When you report a problem to IBM, you are asked to supply a severity level. Therefore, you need to understand and assess the business impact of the problem.

To determine the severity level, use the following table.

Severity	Description
1	The problem has a critical business impact: you are unable to use the program, resulting in a critical impact on operations. This condition requires an immediate solution.
2	The problem has a significant business impact: the program is usable, but it is severely limited.
3	The problem has some business impact: the program is usable, but less significant features (not critical to operations) are unavailable.
4	The problem has minimal business impact: the problem causes little impact on operations or a reasonable circumvention to the problem was implemented.

Describe the problem and gather background information. When you describe the problem to IBM, be as specific as possible. Include all relevant background information so that IBM Rational Software Support specialists can help you solve the problem efficiently. To save time, know the answers to these questions:

What software versions were you running when the problem occurred?

To determine the exact product name and version, use the option applicable to you: Start the IBM Installation Manager and click **File > View Installed Packages**. Expand a package group and select a package to see the package name and version number.

Start your product, and click **Help** > **About** to see the offering name and version number.

What is your operating system and version number (including any service packs or patches)?

Do you have logs, traces, and messages that are related to the problem symptoms?

Can you recreate the problem? If so, what steps do you perform to recreate the problem?

Did you make any changes to the system? For example, did you make changes to the hardware, operating system, networking software, or other system components?

Are you currently using a workaround for the problem? If so, be prepared to describe the workaround when you report the problem.

Submit the problem to IBM Rational Software Support in one of the following ways:

Online: Go to the IBM Rational Software Support website at <https://www.ibm.com/software/rational/support/>. In the Rational support task navigator, click **Open Service Request**. Select the electronic problem reporting tool, and open a Problem Management Record (PMR) to describe the problem.

For more information about opening a service request, go to <http://www.ibm.com/software/support/help.html>.

You can also open an online service request by using the IBM Support Assistant. For more information, go to <http://www.ibm.com/software/support/isa/faq.html>.
By phone: For the phone number to call in your country or region, visit the IBM directory of worldwide contacts at <http://www.ibm.com/planetwide/> and click the name of your country or geographic region.

Through your IBM Representative: If you cannot access IBM Rational Software Support online or by phone, contact your IBM Representative. If necessary, your IBM Representative can open a service request for you. For complete contact information for each country, visit <http://www.ibm.com/planetwide/>.

Appendix

Notices

© Copyright IBM Corporation 1986, 2009.

This information was developed for products and services offered in the U.S.A. IBM may not offer the products, services, or features discussed in this document in other countries. Consult your local IBM representative for information on the products and services currently available in your area. Any reference to an IBM product, program, or service is not intended to state or imply that only that IBM product, program, or service may be used. Any functionally equivalent product, program, or service that does not infringe any IBM intellectual property right may be used instead. However, it is the user's responsibility to evaluate and verify the operation of any non-IBM product, program, or service.

IBM may have patents or pending patent applications covering subject matter described in this document. The furnishing of this document does not grant you any license to these patents. You can send written license inquiries to:

IBM Director of Licensing
IBM Corporation
North Castle Drive
Armonk, NY 10504-1785

For license inquiries regarding double-byte character set (DBCS) information, contact the IBM Intellectual Property Department in your country or send written inquiries to:

Intellectual Property Licensing
Legal and Intellectual Property Law
IBM Japan, Ltd.
1623-14, Shimotsuruma, Yamato-shi

Kanagawa 242-8502 Japan
The following paragraph does not apply to the United Kingdom or any other country where such provisions are inconsistent with local law: INTERNATIONAL BUSINESS MACHINES CORPORATION PROVIDES THIS PUBLICATION "AS IS" WITHOUT WARRANTY OF ANY KIND, EITHER EXPRESS OR IMPLIED, INCLUDING, BUT NOT LIMITED TO, THE IMPLIED WARRANTIES OF NON-INFRINGEMENT, MERCHANTABILITY OR FITNESS FOR A PARTICULAR PURPOSE. Some states do not allow disclaimer of express or implied warranties in certain transactions. Therefore, this statement may not apply to you.

This information could include technical inaccuracies or typographical errors. Changes are periodically made to the information herein; these changes will be incorporated in new editions of the publication. IBM may make improvements and/or changes in the product(s) and/or the program(s) described in this publication at any time without notice.

Any references in this information to non-IBM websites are provided for convenience only and do not in any manner serve as an endorsement of those websites. The materials at those websites are not part of the materials for this IBM product and use of those websites is at your own risk.

IBM may use or distribute any of the information you supply in any way it believes appropriate without incurring any obligation to you.

Licensees of this program who wish to have information about it for the purpose of enabling: (i) the exchange of information between independently created programs and other programs (including this one) and (ii) the mutual use of the information which has been exchanged, should contact:

Intellectual Property Dept. for Rational Software
IBM Corporation
5 Technology Park Drive
Westford, MA 01886
U.S.A.

Such information may be available, subject to appropriate terms and conditions, including in some cases, payment of a fee.

The licensed program described in this document and all licensed material available for it are provided by IBM under terms of the IBM Customer Agreement, IBM International Program License Agreement or any equivalent agreement between us.

Any performance data contained herein was determined in a controlled environment. Therefore, the results obtained in other operating environments may vary significantly. Some measurements may have been made on development-level systems and there is no guarantee that these measurements will be the same on generally available systems. Furthermore, some measurements may have been estimated through extrapolation. Actual results may vary. Users of this document should verify the applicable data for their specific environment.

Information concerning non-IBM products was obtained from the suppliers of those products, their published announcements or other publicly available sources. IBM has not tested those products and cannot confirm the accuracy of performance, compatibility or any other claims related to non-IBM products. Questions on the

capabilities of non-IBM products should be addressed to the suppliers of those products.

This information contains examples of data and reports used in daily business operations. To illustrate them as completely as possible, the examples include the names of individuals, companies, brands, and products. All of these names are fictitious and any similarity to the names and addresses used by an actual business enterprise is entirely coincidental.

Copyright license

This information contains sample application programs in source language, which illustrate programming techniques on various operating platforms. You may copy, modify, and distribute these sample programs in any form without payment to IBM, for the purposes of developing, using, marketing or distributing application programs conforming to the application programming interface for the operating platform for which the sample programs are written. These examples have not been thoroughly tested under all conditions. IBM, therefore, cannot guarantee or imply reliability, serviceability, or function of these programs.

Each copy or any portion of these sample programs or any derivative work, must include a copyright notice as follows:

© (your company name) (year). Portions of this code are derived from IBM Corp. Sample Programs. © Copyright IBM Corp. 2009.

If you are viewing this information softcopy, the photographs and color illustrations may not appear.

Trademarks

IBM, the IBM logo, and ibm.com are trademarks or registered trademarks of International Business Machines Corp., registered in many jurisdictions worldwide. Other product and service names might be trademarks of IBM or other companies. A current list of IBM trademarks is available on the Web at “[Copyright and trademark information](#)” at www.ibm.com/legal/copytrade.html

Microsoft and Windows are trademarks of Microsoft Corporation in the United States, other countries, or both.

Other company, product or service names mentioned may be trademarks or service marks of others.

Index

A

Access Control: Overall steps to implement, 65

Accessing encyclopedia with SA XT, 32

Adding encrypted security, 52

C

Catalog, 64

D

Desktop Heap allocation, 30, 49

E

Enterprise Catalog: Attaching encyclopedias, 78

Enterprise encyclopedias: Opening with SA, 80; Oracle, 75; SQL Server, 69; User rights, 69

F

folder permissions for SA XT Domain Account, 47

H

Hardware requirements, 5

I

Impersonation, 45, 52

impersonation account, 29

Installation Scenarios, 6

Installations to Oracle environments, 15

Installations to SQL Express environments, 13

Installations to SQL Server environments, 10

Installing Rational System Architect, 7

integration: SA and SA XT, 32; SA XT and SA Catalog Manager, 32

Internet Information Services, 30, 45; Enabling manually, 36; Verifying properties for SA XT, 41

L

License management, 2

M

memory, 30

O

Oracle, 2, 5, 6, 15, 17, 18, 20, 28, 29, 30, 32, 46, 49, 50, 60; Adding encrypted security, 54; Decrypting Security, 55; Granting Access Rights, 75

Oracle authentication for SA XT and SA XT Web Service, 46

P

permissions, 60, 64, 65, 69, 71, 72, 74

Permissions, 33

R

Requirements: Client, 31; Hardware, 30; IIS Server, 30; License, 34; Operating System and Software, 30; SA XT installer, 29

Roaming Profiles, 19

S

SA Catalog Manager: Definition, 64; Overview, 64; Rights for 'SA Admin' Group, 73; Rights for 'SA User' Group, 71

Silent Installation, 23

SQL Express, 11

SQL Server, 5

SQL Server 2005, 11

System Architect Startup Wizard, 8

System Architect temporary folders, 47

System Architect XT Web Service, 26, 58

System Requirements, 4

T

Testing the Rational System Architect XT website, 49

U

Uninstalling Rational System Architect XT, 61

Upgrading and patches, 3

Upgrading Rational System Architect, 21

upgrading to V11.0, 20

User Groups, 79

W

web.config, 45, 46, 47, 48, 51, 52, 53, 54, 55, 60; Adding encrypted security, 52; Editing, 45; editing for SA XT Web Service, 60; Memory allocation, 51; Setting temporary folders, 47

Windows Desktop Heap allocation, 50