

Rational. Directory Server



Installation Guide

IBM Rational Directory Server
Installation Guide
Release 5.1

Before using this information, be sure to read the general information under Appendix, [“Notices” on page 55](#).

This edition applies to **VERSION 5.1, IBM Rational Directory Server** and to all subsequent releases and modifications until otherwise indicated in new editions.

© **Copyright IBM Corporation 2006, 2009**

US Government Users Restricted Rights—Use, duplication or disclosure restricted by GSA ADP Schedule Contract with IBM Corp.

Table of contents

About this manual	1
Contacting IBM Rational Software Support	2
Prerequisites	2
Submitting problems	2
Conventions used in this guide	5
Introduction	7
Obtaining the RDS software	7
Installation sequence	7
Types of RDS installations	8
Modes of installations	8
Preparing installation information	9
Server Installation	11
System requirements	11
Industry standards	11
Operating system requirements	11
Disk space and memory requirements	12
Before installing RDS	12
Installation user	13
What is not supported	13
Console mode installation	13
More information on RDS installation	14
Installation path	14
Local user/group creation	14
Folders created by the installer	14
Tivoli Directory Server Installation	15
Installing RDS	22
Post installation instructions	33

Server startup	33
Starting the Web server	33
Review log files	34
Server Removal	35
Removing the RDS	35
Client Installation	39
Installing the RDA	39
Client Removal	45
Removing the RDA	45
Launching RDA	49
Troubleshooting RDS	51
Terms and Concepts	53
Appendix A: Notices	55
Trademarks	58
Index	59

1

About this manual

This manual guides you through the IBM® Rational® Directory Server (RDS) installation and uninstallation.

It contains the following sections:

- [Introduction](#)
- [RDS documentation](#)
- [Types of RDS installations](#)
- [Modes of installations](#)
- [Preparing installation information](#)
- [Server Installation](#)
- [Server Removal](#)
- [Client Installation](#)
- [Client Removal](#)

RDS documentation

This section provides the information on the related documents available for RDS. The following RDS documents are available on the Product Support Web site, <http://www.ibm.com/software/rational/support/>

Document Name	Description
Rational Directory Server Installation Guide	Provides information on how to install the RDS.
Rational Directory Server Product Manual	Provides detailed information on RDS features supported in this release.
Rational Directory Server Administration Manual	Provides information on RDS administration.

Contacting IBM Rational Software Support

If the self-help resources have not provided a resolution to your problem, you can contact IBM® Rational® Software Support for assistance in resolving product issues.

Note If you are a heritage Telelogic customer, a single reference site for all support resources is located at <http://www.ibm.com/software/rational/support/telelogic/>

Prerequisites

To submit your problem to IBM Rational Software Support, you must have an active Passport Advantage® software maintenance agreement. Passport Advantage is the IBM comprehensive software licensing and software maintenance (product upgrades and technical support) offering. You can enroll online in Passport Advantage from <http://www.ibm.com/software/lotus/passportadvantage/howtoenroll.html>

- To learn more about Passport Advantage, visit the Passport Advantage FAQs at http://www.ibm.com/software/lotus/passportadvantage/brochures_faqs_quickguides.html.
- For further assistance, contact your IBM representative.

To submit your problem online (from the IBM Web site) to IBM Rational Software Support, you must additionally:

- Be a registered user on the IBM Rational Software Support Web site. For details about registering, go to <http://www.ibm.com/software/support/>.
- Be listed as an authorized caller in the service request tool.

Submitting problems

To submit your problem to IBM Rational Software Support:

1. Determine the business impact of your problem. When you report a problem to IBM, you are asked to supply a severity level. Therefore, you need to understand and assess the business impact of the problem that you are reporting.

Use the following table to determine the severity level.

Severity	Description
1	The problem has a <i>critical</i> business impact: You are unable to use the program, resulting in a critical impact on operations. This condition requires an immediate solution.
2	This problem has a <i>significant</i> business impact: The program is usable, but it is severely limited.
3	The problem has <i>some</i> business impact: The program is usable, but less significant features (not critical to operations) are unavailable.
4	The problem has <i>minimal</i> business impact: The problem causes little impact on operations or a reasonable circumvention to the problem was implemented.

2. Describe your problem and gather background information, When describing a problem to IBM, be as specific as possible. Include all relevant background information so that IBM Rational Software Support specialists can help you solve the problem efficiently. To save time, know the answers to these questions:
 - What software versions were you running when the problem occurred?
To determine the exact product name and version, use the option applicable to you:
 - Start the IBM Installation Manager and select **File > View Installed Packages**. Expand a package group and select a package to see the package name and version number.
 - Start your product, and click **Help > About** to see the offering name and version number.
 - What is your operating system and version number (including any service packs or patches)?
 - Do you have logs, traces, and messages that are related to the problem symptoms?
 - Can you recreate the problem? If so, what steps do you perform to recreate the problem?

- Did you make any changes to the system? For example, did you make changes to the hardware, operating system, networking software, or other system components?
 - Are you currently using a workaround for the problem? If so, be prepared to describe the workaround when you report the problem.
3. Submit your problem to IBM Rational Software Support. You can submit your problem to IBM Rational Software Support in the following ways:
- **Online:** Go to the IBM Rational Software Support Web site at <https://www.ibm.com/software/rational/support/> and in the Rational support task navigator, click **Open Service Request**. Select the electronic problem reporting tool, and open a Problem Management Record (PMR), describing the problem accurately in your own words.

For more information about opening a service request, go to <http://www.ibm.com/software/support/help.html>

You can also open an online service request using the IBM Support Assistant. For more information, go to <http://www.ibm.com/software/support/isa/faq.html>.
 - **By phone:** For the phone number to call in your country or region, go to the IBM directory of worldwide contacts at <http://www.ibm.com/planetwide/> and click the name of your country or geographic region.
 - **Through your IBM Representative:** If you cannot access IBM Rational Software Support online or by phone, contact your IBM Representative. If necessary, your IBM Representative can open a service request for you. You can find complete contact information for each country at <http://www.ibm.com/planetwide/>.

Conventions used in this guide

Typeface	Description
<i>Italic</i>	Used for book titles and terminology.
Bold	Used for items that you can select and menu paths, also used for emphasis.
Courier	Used for commands, file names, and directory paths. Represents command syntax to be entered verbatim. Signifies computer output that displays on-screen.
Courier Italic	Represents values in a command string that you supply. For example, (drive:\username\commands) .

2

Introduction

The RDS is a single enterprise directory solution designed for user authentication and administration for IBM® Rational® Solutions for Enterprise Lifecycle Management tools. RDS allows the users to login using the same credentials across Enterprise Lifecycle Management tools for which they have authorized access.

RDS 5.1 is designed to support a wide range of platforms. For more information on the platform support see [Operating system requirements \(page 11\)](#).

Obtaining the RDS software

You can download the RDS from the support site or from the zip distribution. After downloading the RDS, make sure you verify the MD5 checksum available under the support site, <http://www.ibm.com/software/rational/support/> matches the downloaded installer. This will ensure that the downloaded installer is not corrupted.

Installation sequence

The RDS must be present in the system for the other tools to connect. You can install the RDS prior to or post other tools installation.

Types of RDS installations

The RDS provides two types of installations:

Installation type	Description
Server Installation	Installs RDS on a local machine. The RDS provides user authentication and administration across Enterprise Lifecycle Management tools using the same credentials.
Client Installation	Installs the client (RDA) on a local machine. The client can access the server on the local machine or on a network.

Modes of installations

The RDS supports following modes of installations:

Installation mode	Description
Stand Alone	Enables you to administer and perform searches for the users and groups that exist locally.
Corporate LDAP Backbone Support	Enables you to configure the RDS to integrate with the external corporate LDAP repositories. You can use this option to enable your corporate backbone to serve as the user/group read-only repository for Enterprise Lifecycle Management tools.
OS Authentication	Enables you to configure the RDS to be part of a specific domain so as to enable the users to access the Enterprise Lifecycle Management tools using their domain login and password. The users are authenticated against the OS hosting the RDS.

Preparing installation information

Preparing installation information in advance can help you to complete the installation process quickly. Before starting the installation, consider creating a worksheet to hold the basic installation information, as described for a typical installation in the following table..

Description	Example
Host Name	ExampleServer
Directory Server port number	1389 (default LDAP port)
Secure port number	1636 (default LDAP SSL port)
Directory Administrator password	<i>tdsadmin</i> user password set at the time of Tivoli Directory Server installation.
Directory Administrator ID	tdsadmin (set by default)
Installation Directory	C:\Program Files\IBM\Rational\RDS_5.1

3

Server Installation

This chapter contains the installation instructions for installing RDS on a Windows platform.

This chapter contains the following sections:

- [System requirements](#)
- [Before installing RDS](#)
- [More information on RDS installation](#)
- [Installing RDS](#)

System requirements

The following section includes the system requirements for the RDS.

Industry standards

The RDS is developed based on the following industry standards.

- LDAP v3 operations
- LDAP search filters
- LDAP v3 intelligent referral

Operating system requirements

The RDS is supported on the following platforms:

- Microsoft Windows Server 2003 Standard, Enterprise Edition (SP1 and R2)

The RDA is supported on the following platforms:

- Microsoft Windows 2003 Standard, Enterprise Edition
- Microsoft Windows XP SP2
- Microsoft Windows Vista

Disk space and memory requirements

Minimum system requirements for RDS

Ensure that sufficient disk space is available before installing the RDS. The following table shows the sample disk space requirement for RDS.

# of Entries	Minimum disk space required	Minimum memory required
10,000 - 250,000	2 GB	1-2 GB
250,000 - 1,000,000	4 GB	4 GB
Over 1,000,000	8 GB	4 GB

Requirements for RDA

Ensure that sufficient disk space is available before installing the RDA. The following table shows the minimum disk space requirement for RDA.

Minimum disk space required	Minimum memory required
300 MB	512 MB RAM (/ and a 350MHz Pentium processor for Windows.

Before installing RDS

Before you install the RDS, ensure that the system is equipped with the set of configurations recommended in this manual to avoid any installation errors.

You must have at least **2 GB** of free disk space and at least **1 GB** free space in %TEMP% folder.

This section describes the following settings that must be in place.

- [Installation user](#)
- [What is not supported](#)

Installation user

The RDS installation should be done by the local administrator i.e the *Administrator* account of Windows operating system.

What is not supported

This section describes the modes or systems that are not supported by RDS. You must not use the modes or systems referred in this section to avoid any installation errors.

This section contains the following components:

- [Console mode installation](#)

Console mode installation

The RDS does not support non-graphical or console mode installation. Hence, the options such as `-console` must not be used at the time of installation.

More information on RDS installation

This section describes certain in built settings and behavior post RDS installations.

This section contains the following components:

- [Installation path](#)
- [Local user/group creation](#)
- [Folders created by the installer](#)

Installation path

The IBM® Tivoli Directory Server® is installed under the path given by the user at the time of the installation. By default the installer uses the path `C:\Program Files\IBM\LDAP\V6.2` for installation.

Local user/group creation

The Tivoli Directory Server installer, by default creates the local user *tdsadmin* and group *DB2USERS* and *DB2ADMNS* on the Operating System (OS).

Folders created by the installer

The installer creates the following set of folders outside the root installation drive.

- `ibm` (gskit installation)
- `idsslapd-tdsadmin`
- `TDSADMIN`
- `idsinstinfo`

Tivoli Directory Server Installation

Before installing RDS, you need to install IBM Tivoli Directory Server 6.2 and IBM DB2 9.5. This section provides instructions on how to install Tivoli and DB2.

Note For detailed information on Tivoli installation, refer to *IBM Tivoli Directory Server Installation and Configuration Guide*.

To install Tivoli, do the following:

1. Download C1N9VML.zip, and C1N9XML.zip and uncompress them to your machine.

Be sure to uncompress the files into a path that has no spaces in the name. Uncompress the .zip files in the same directory.

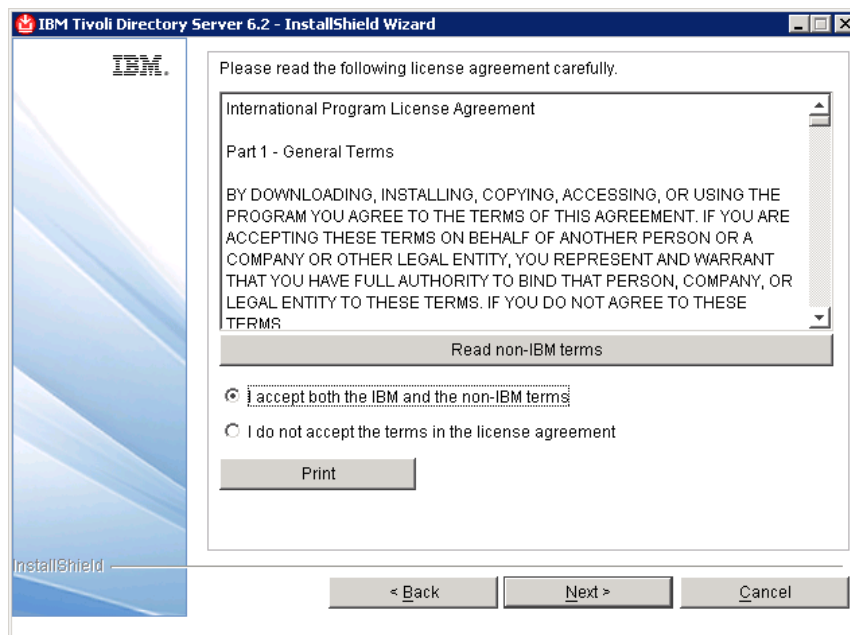
2. Go to tdsV6.2\tds folder.
3. Double-click the install_tds.bat file.

The language dialog box appears. By default, **English** is selected by the installer.

4. Click **OK**.
5. On the Welcome dialog box, click **Next**.



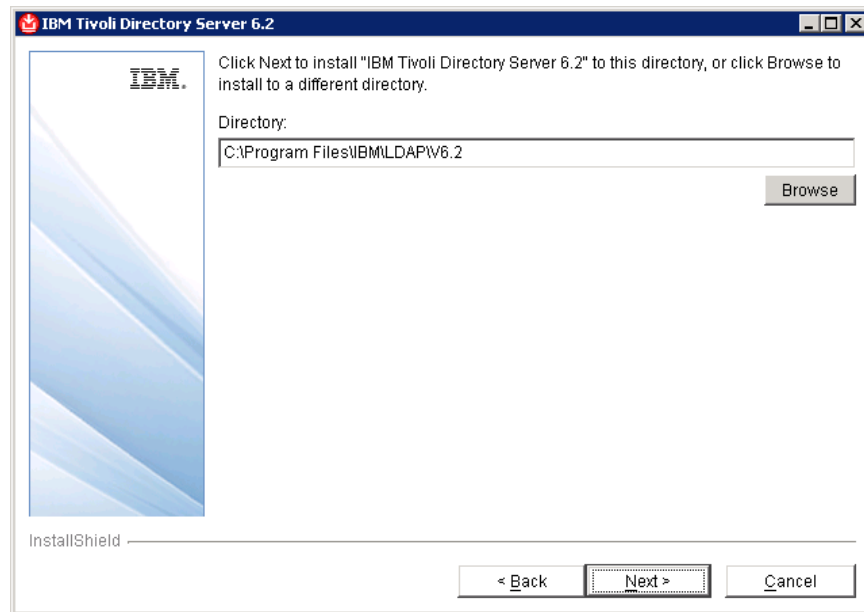
6. Read the Software license agreement and select **I accept both the IBM and the non-IBM terms**.



7. Click **Next**.

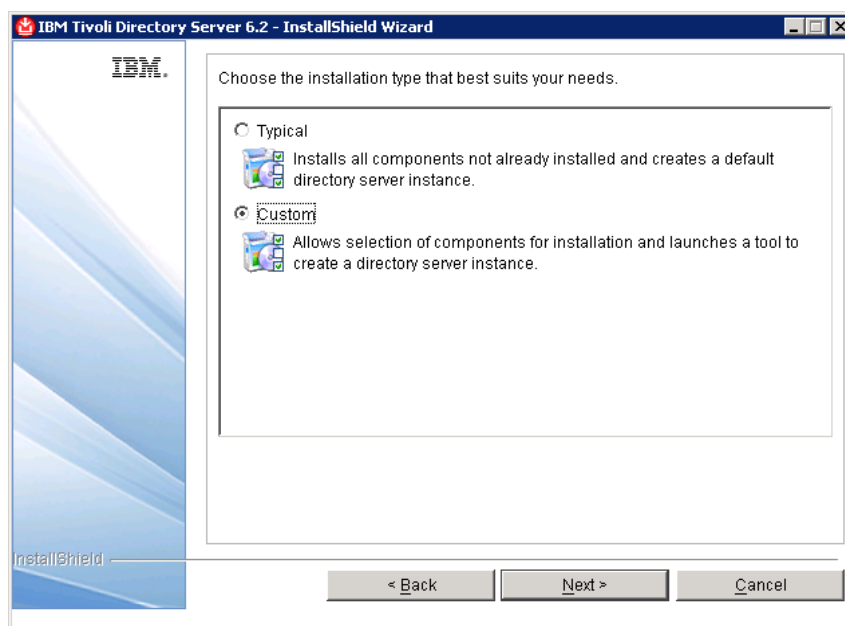
8. Choose the installation folder.

You can use the default location provided by the installer or click **Browse** to select a different location. You can also edit the directory path manually by clicking anywhere in the text box.



9. Click **Next**.

10. Click **Custom** as installation type.

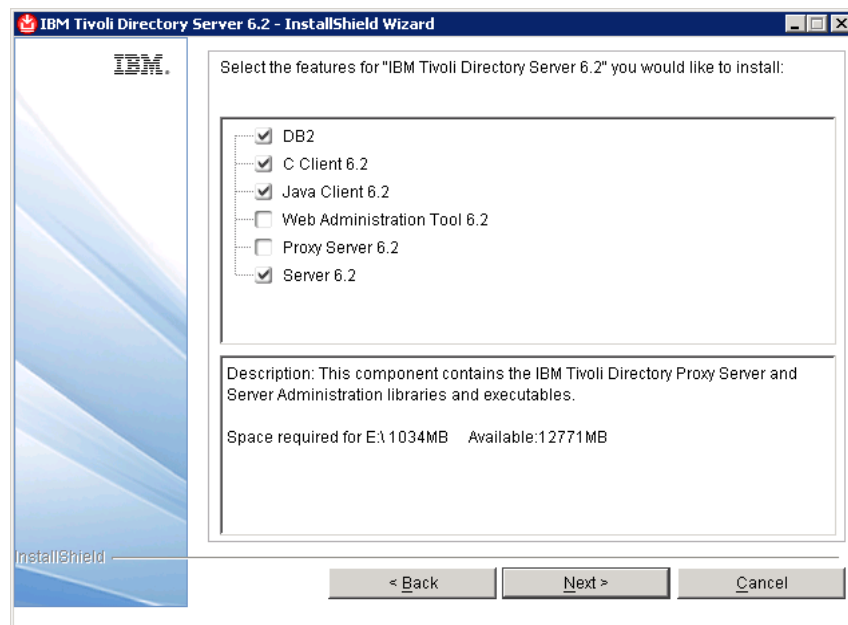


11. Click **Next**.

12. Select only the following feature:

- DB2
- C Client 6.2
- Java Client 6.2
- Server 6.2

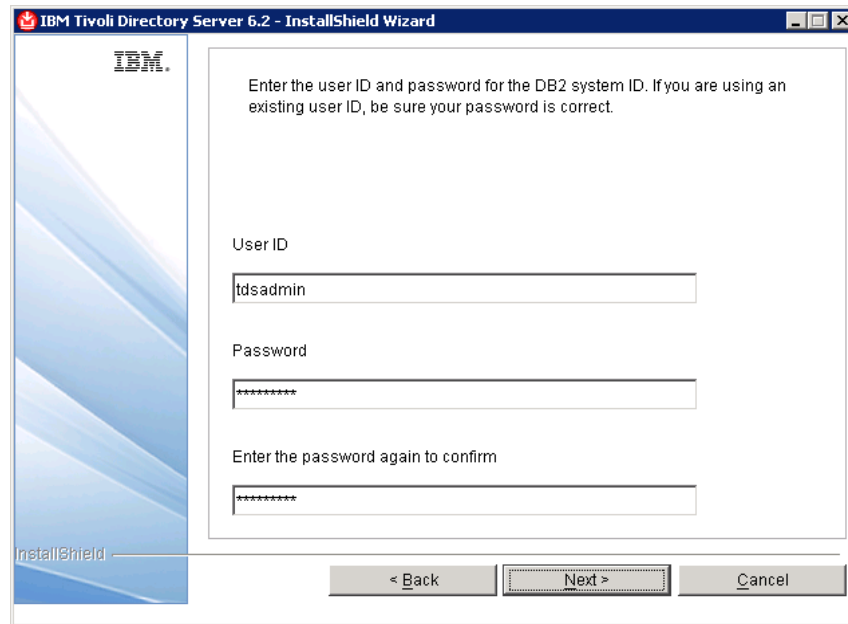
By default, all feature are selected by the installer. However, you need to select only the features that are listed above. To deselect rest of the features, click the check box against the option.



13. Click **Next**.

A dialog box is displayed prompting you to enter a user ID and password for the DB2 system ID.

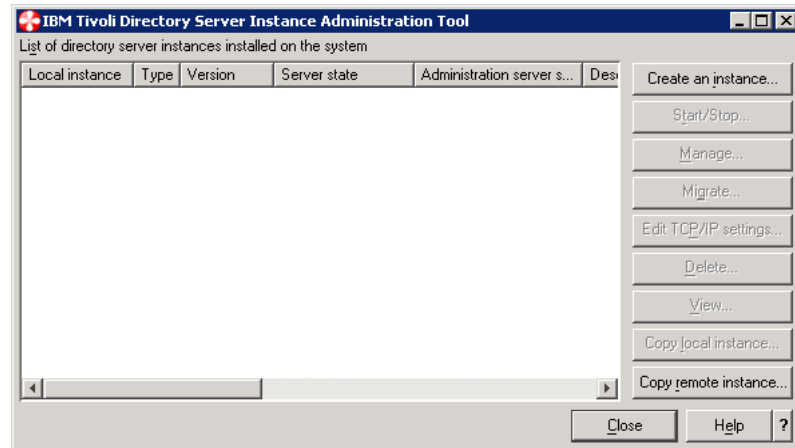
14. Type the user ID as *tdsadmin*.
15. Type the password and then type the password again for verification. Make sure that the password you supply meets the complexity requirements enabled in your system.



Note Remember the password you have entered for *tdsadmin* user. The same password needs to be given at the time of RDS installation.

16. Click **Next**.
A summary window displays the components that will be installed, the installation locations, and the amount of disk space required.
17. Click **Install** to begin the installation.
Once the installation is successful, the **IBM Tivoli Directory Server Instance Administration Tool** dialog box is displayed.

18. Click **Close** and then click **Yes** on the message box.



19. Click **Finish** on the **IBM Tivoli Directory Server 6.2** dialog box.

Installing RDS

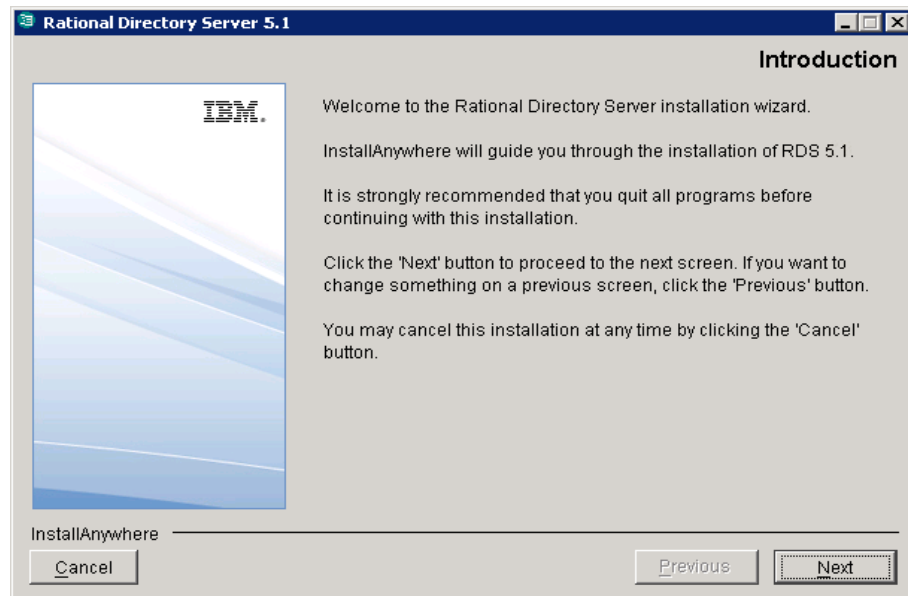
This section provides you the installation steps for RDS. Follow these steps after completing the Tivoli installation detailed in the previous section.

To start the RDS installation, first unzip the RDS installer in a folder using the Win-Zip utility. Then, follow the RDS installation procedures given below.

You can go backward or forward at any time during the installation to change options. To abort the installation, click **Cancel**.

To Install RDS on Windows:

1. Open the **<RDS Image>\Install** folder and double-click the **RDS.exe**. The **Introduction** dialog box appears.

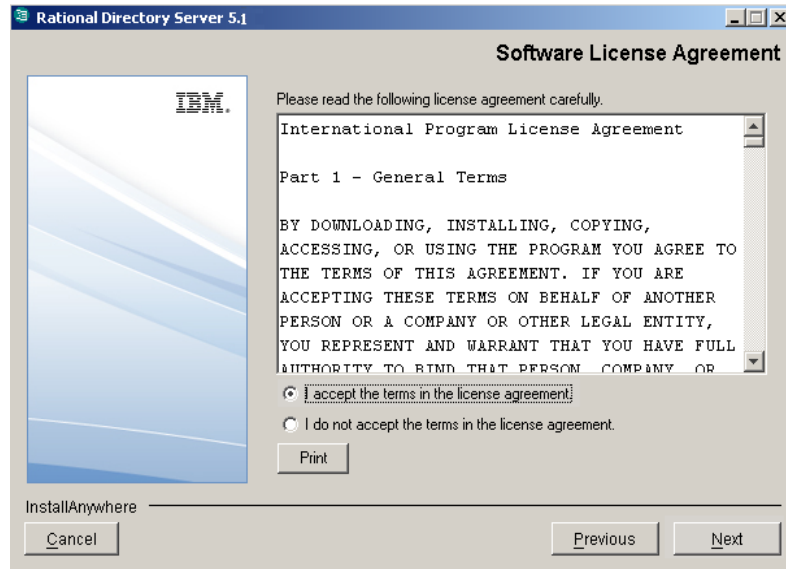


2. Click **Next**. The **License Agreement** dialog box is displayed.
3. You can save the licence details in a document.

To copy the license information:

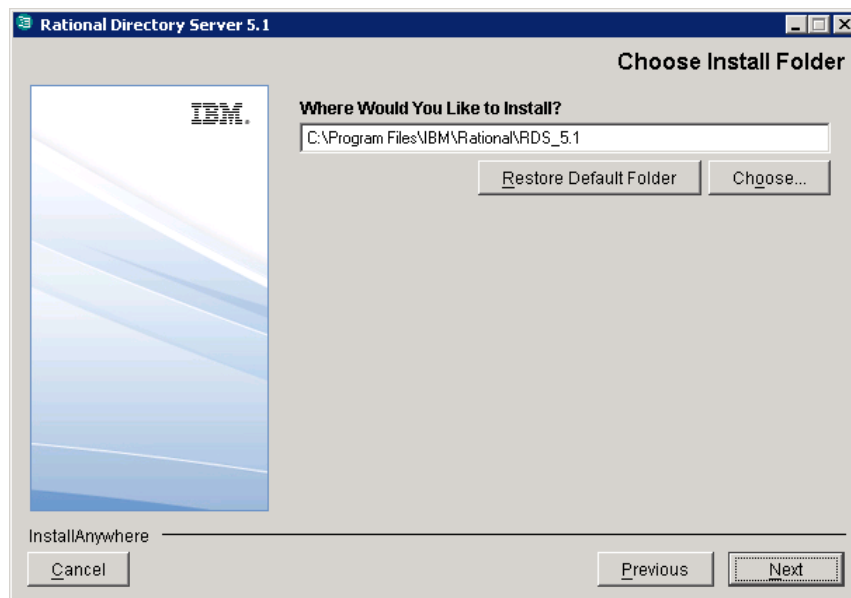
- Right click on the licence window and click **Select All**, and then click **Copy**.
- Open any file, paste the license information and save the file.

4. Review and click **I accept the terms of the license agreement.**

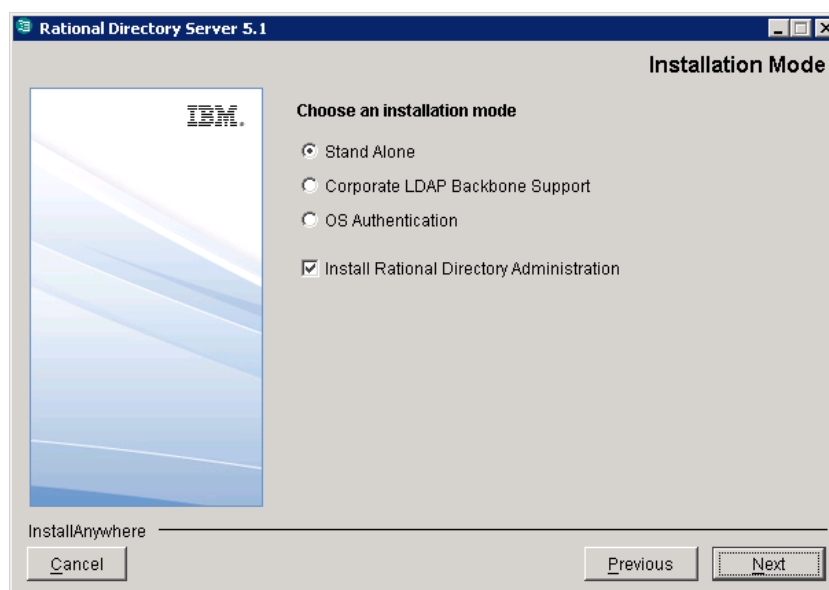


5. Click **Next**. The **Choose Install Folder** dialog box is displayed.

You can use the default location provided by the installer or click **Choose** to specify a different location. You can also edit the path manually by clicking anywhere in the text box. To use the default location, click **Restore Default Folder**. This restores the default location provided by the installer.



- Click **Next**. The **Installation Mode** dialog box is displayed.



- RDS provides following modes of installations:
 - Stand-Alone
 - Corporate LDAP Backbone Support
 - OS Authentication

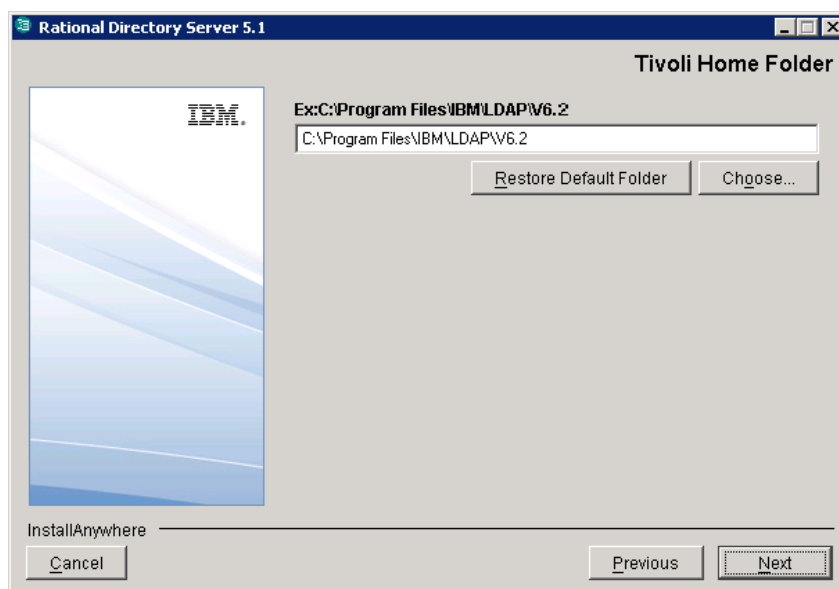
The RDS installer also provides the option to install Rational Directory Administration tool. However, you can choose to install that separately. The **Install Rational Directory Administration** check box is selected by default. You can click to clear the check box, if you choose to install separately.

- Select the install mode. By default, the **Stand-Alone** mode is selected by the installer. For more information on what each of these modes mean refer to [Modes of installations \(page 8\)](#).

9. Click **Next**.

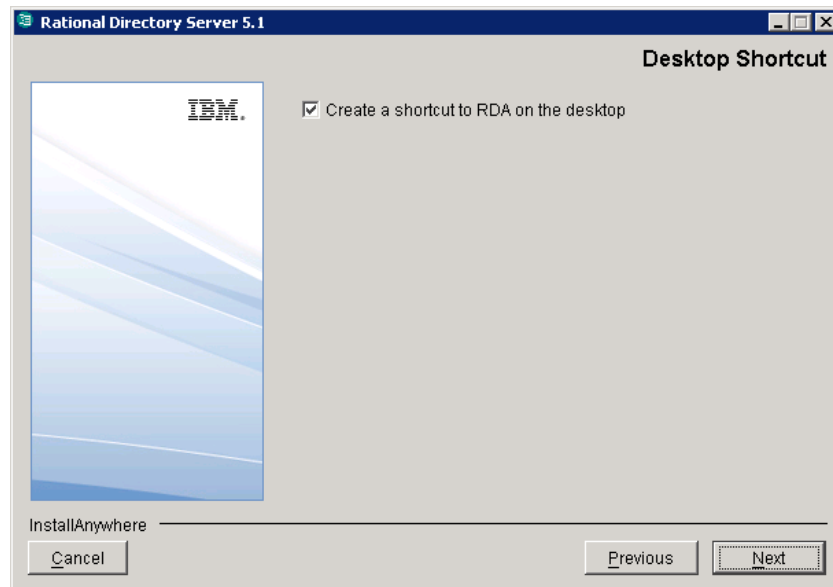
The **Tivoli Home Folder** dialog box is displayed.

10. Click **Choose** to specify the directory path where you have installed Tivoli. You can also type the path manually by clicking anywhere in the text box.

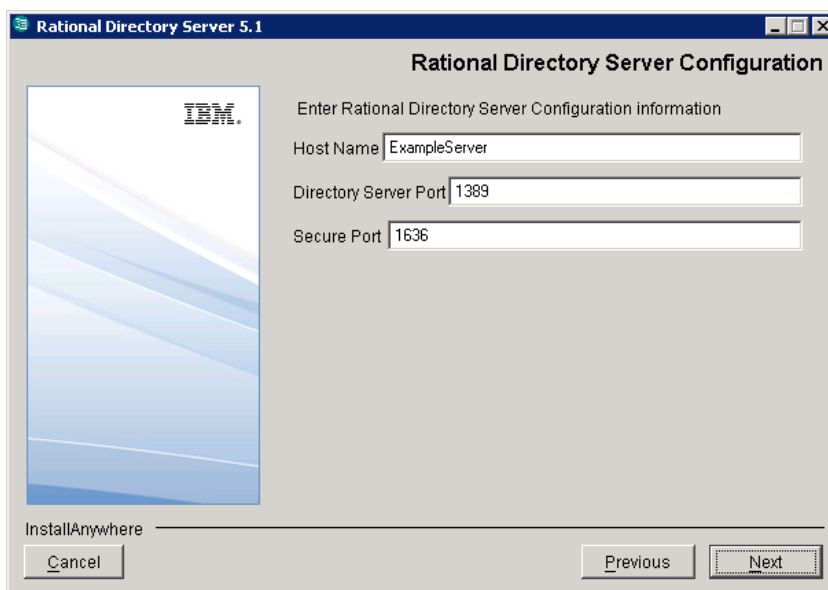


11. Click **Next**. The **Desktop Shortcut** dialog box is displayed.

This creates a RDA shortcut on the desktop. The **Create a shortcut to RDA on the desktop** option is selected by default. You can click to clear the checkbox if you do not want the shortcut to be created on the desktop.



12. Click **Next**. The **Rational Directory Server Configuration** dialog box is displayed. This defines the configuration settings for RDS.
13. Type the directory server configuration properties.



The field description and the value to be entered in each field is explained in the following table.

Field Name	Description	Values
Host Name	The host name of the computer.	By default, the installer uses the valid computer name. Use the default value provided by the installer or enter a valid computer name in this field.
Directory Server Port	The port number of the directory server.	By default, the installer uses the LDAP server port number “1389”. Use the default value provided by the installer or enter the valid port number for the computer in this field.

Field Name	Description	Values
Secure Port	The LDAP Secure Socket Layer (SSL) port number. The SSL is enabled by default by the installer using the secure port number provided during the installation.	By default, the installer uses the secure LDAP port number “1636” to enable the SSL. Use the default value provided by the installer or enter the valid secure port number in this field.

14. Click **Next**.

15. Type the **Directory Administrator User** password.

This should be the same password set at the time of Tivoli Directory Server installation.

The field description and the value to be entered in each field is explained in the following table:.

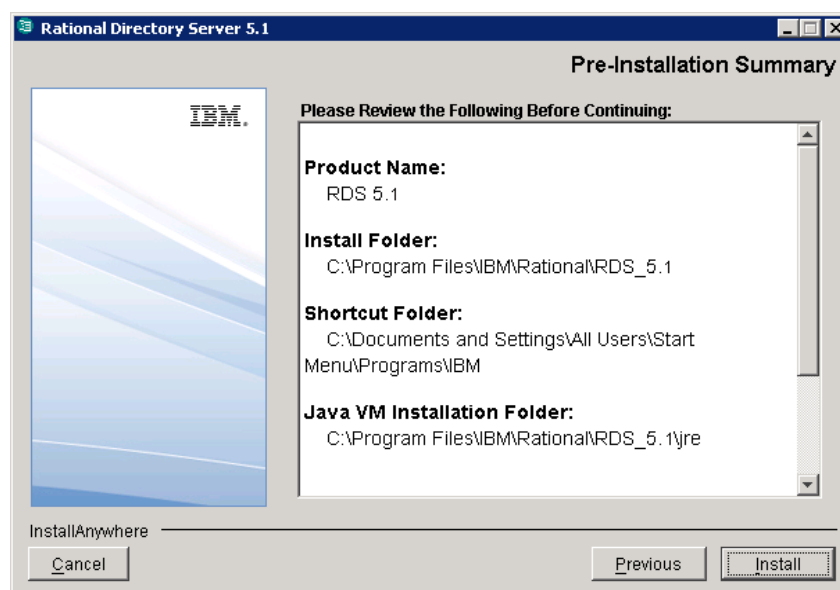
Field Name	Description	Values
Rational Directory Server Administrator	The admin user for the RDS.	The RDS administrator ID is set by default. The administrator ID cannot be modified.
Administrator Password	The password for RDS admin user.	Type the <i>tdsadmin</i> user password given at the time of Tivoli installation.
Confirm Password	This describes the password authentication for the RDS admin user.	Re-enter the password in this field. Both passwords should match for the installation to continue.

16. Click **Next**.

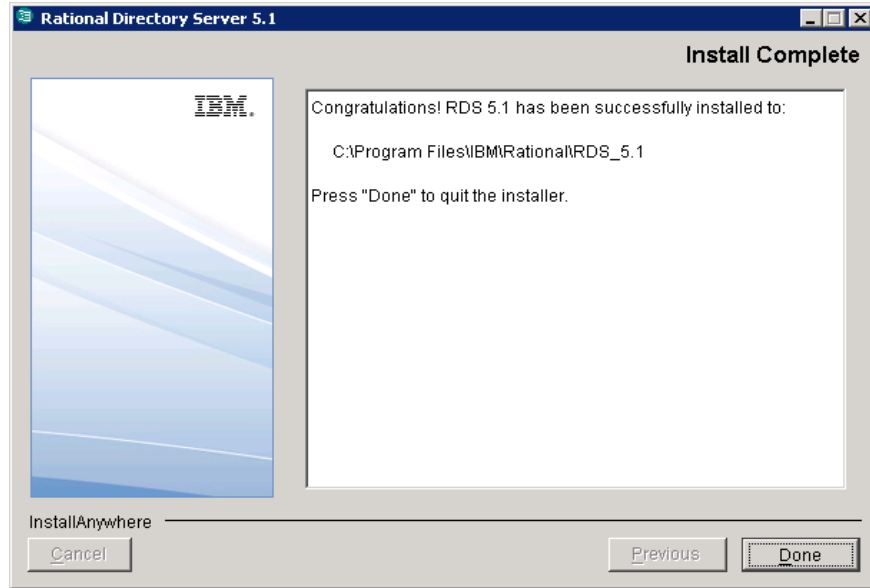
The **Pre-Installation Summary** dialog box displayed. This dialog box shows the installation summary.

17. Review the information, and then click **Install**.

The **Install Complete** dialog box is displayed if the installation is successful.



18. Click **Done** to exit the installer.



Post installation instructions

This section details the basic checks that you can perform to ensure that the installation has went through fine.

This section contains the following components:

- [Server startup](#)
- [Starting the Web server](#)
- [Review log files](#)

Server startup

Ensure that the server is started after the installation. In case the server is not started automatically, start the server manually using the following command.

```
<RDS_Install_Dir>\IBM\Rational\RDS_5.1\RDSUtility\  
Start_RDS_server.bat
```

For example:

```
C:\Program Files\IBM\Rational\RDS_5.1\RDSUtility\  
Start_RDS_server.bat
```

You can also double-click the `Start_RDS_server.bat` located under the same path to start the server.

Note The RDS is configured as a Windows service. However, this should be changed to an automatic service if it is set to manual. This will ensure that the server starts up automatically after a machine reboot.

Starting the Web server

After installing RDS, start the Web server using the following command:

```
<RDS_Install_Dir\WebAccessServer\Start_RDAServer.bat>
```

For example:

```
C:\Program Files\IBM\Rational\RDS_5.1\WebAccessServer\  
Start_RDAServer.bat
```

Review log files

1. If the installation is corrupted and the server is not started, review the following log files carefully for any errors.
 - <RDS_InstallHome>\logs
 - <RDS_InstallHome>\RDS_5.1_InstallLog.log
 - <TivoliInstallHome>\LDAP\V6.2\var
 - <InstallRootDrive>\idsslapd-tdsadmin\logs
 - <InstallRootDrive>\TDSADMIN\db2diag.log
 - <InstallRootDrive>\TDSADMIN\stmmlog
2. If the log files specify the installation has failed with Tivoli or DB2 errors, look for the server startup errors in `ibmslapd.log`.

Note The above listed log files must be sent along with other relevant information to the support specialist while reporting the errors. For more information on reporting the errors, see [Contacting IBM Rational Software Support \(page 2\)](#).

4

Server Removal

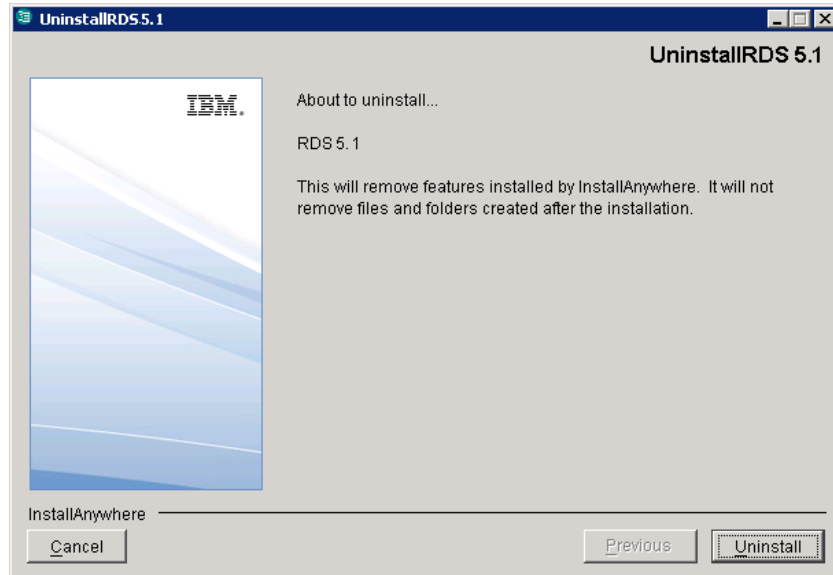
Removing the RDS

This chapter describes the steps to remove RDS and Tivoli servers. Remove the server with the same user account that was used for installation. You must remove RDS first and then the Tivoli Directory Server.

Note Removing the IBM Tivoli Directory Server also removes the IBM DB2.

To remove RDS, do the following:

1. Stop the **RDS Web Access Server** by pressing the **CTRL+C** key on the Web Access Server startup console.
2. Remove RDS using one of the options:
 - Use **Add/Remove Programs** in the Windows Control Panel to remove RDS.
 - Double-clicking the **UninstallRDS 5.1.exe** from the path `<RDS_Install_Dir>/UninstallRDS5.1`. The **Uninstall RDS 5.1** dialog box appears.
3. Click **Uninstall** to remove the RDS.



4. The **Uninstaller** removes the components one by one.
5. After removing all the components successfully, the **Uninstall Complete** dialog box is displayed.
6. Click **Done** to exit the installer.



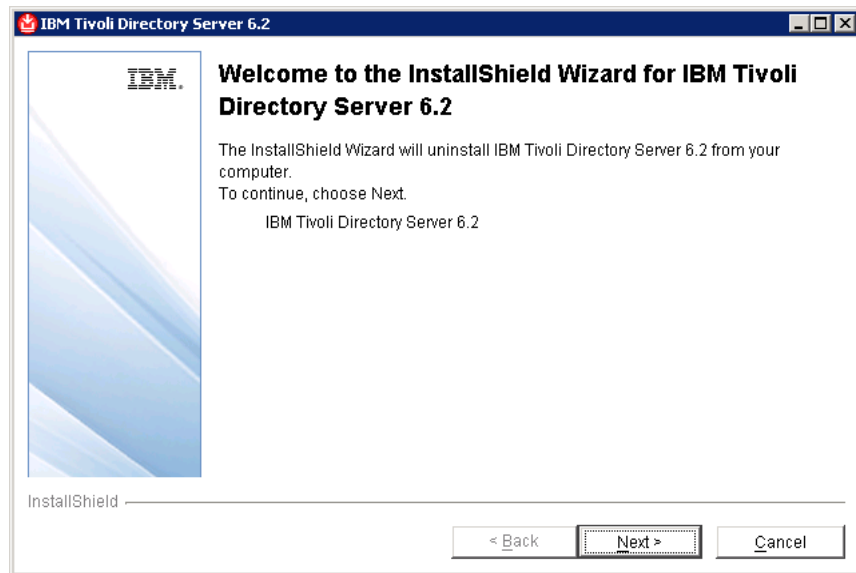
7. Click **Yes** on the message box to restart the system.

To remove Tivoli, do the following:

1. Stop the **IBM Tivoli** server by pressing the **CTRL+C** key on the startup console if the server is manually started.
2. Use the **Add/Remove Programs** from the Control Panel to remove Tivoli server 6.2.

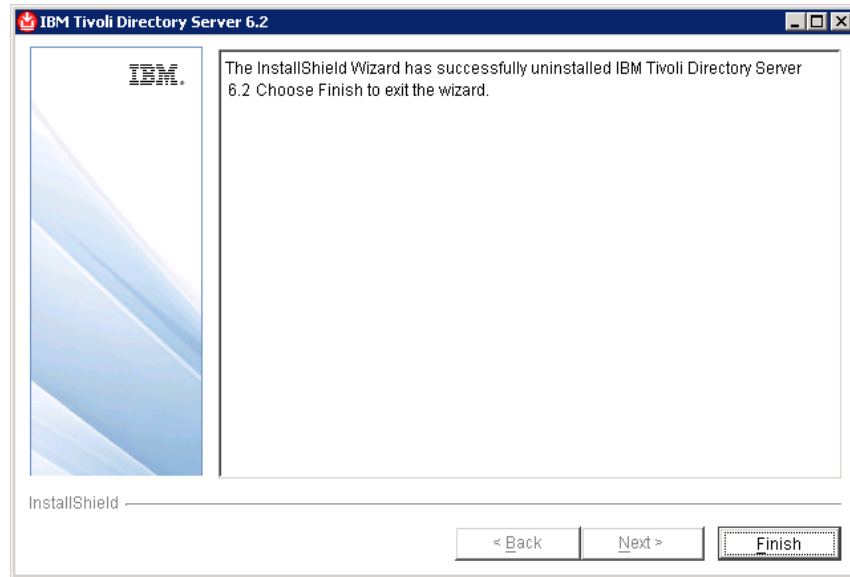
The IBM Tivoli Directory Server 6.2 is displayed.

-
3. On the Wizard, click **Next** to continue uninstallation.
By default, all the components are selected.



4. Click **Next**.
The selected components for uninstallation is listed.
5. Click **Next**.
The uninstallation is started.
6. The **Uninstaller** removes the components one by one.

7. Click **Finish** to exit the installer after successful uninstallation.



5

Client Installation

IBM® Rational® Directory Administration (RDA) is a GUI based client application used to perform day-to-day administration tasks such as creating users, groups, roles, performing searches, migrating data, etc.

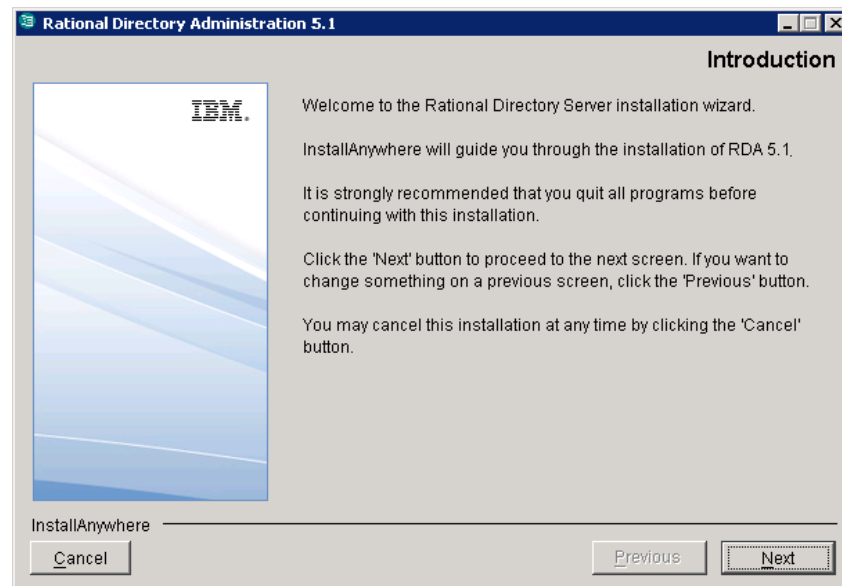
RDA is available as a web-based tool that you can access using a browser.

Installing the RDA

This chapter describes the steps required to install RDA. To start the installation, first unzip the RDA installer in a folder using the WinZip utility. Then, follow the installation procedure below.

To install RDA do the following:

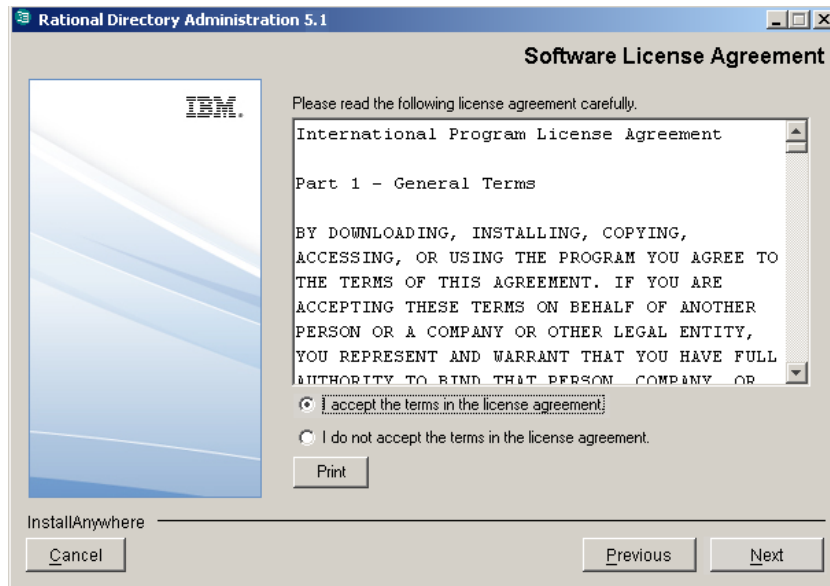
1. Open the <RDA Image>\Install folder and double-click the **RDA.exe**. The **Introduction** dialog box is displayed.



2. Click **Next**. The **License Agreement** dialog box is displayed.
3. You can also save the licence details in a document.

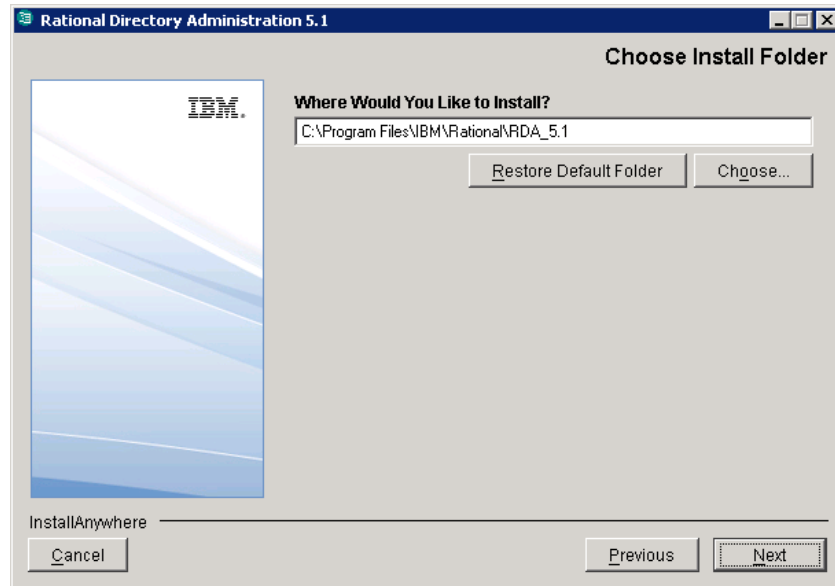
To copy the license information do the following:

- Right click on the license window and click **Select All**, and then click **Copy**.
 - Open any file, paste the license information and save the file.
4. Review and click **I accept the terms of the license agreement**.

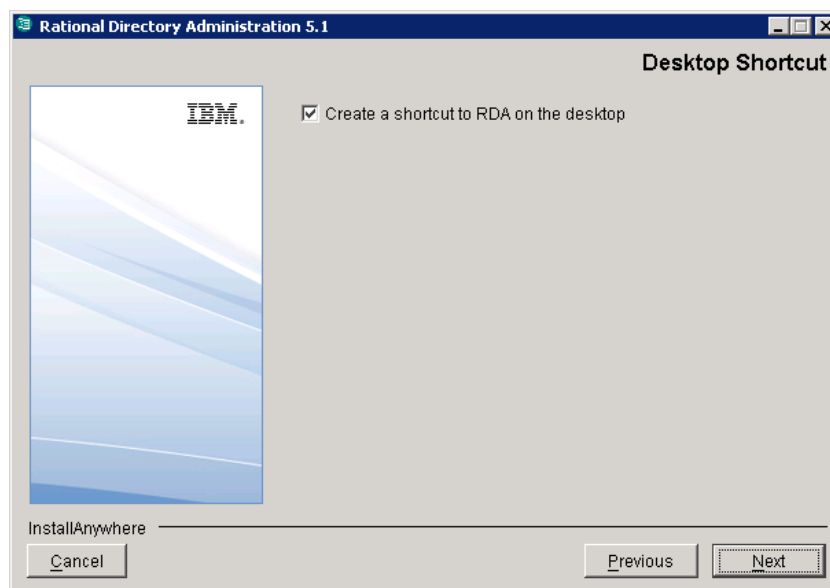


-
5. Click **Next**. The **Choose Install Folder** dialog box is displayed.

You can use the default location provided by the installer or click **Choose** to specify a different location. You can also edit the path manually by clicking anywhere in the text box. To use the default location, click **Restore Default Folder**. This restores the default location provided by the installer.

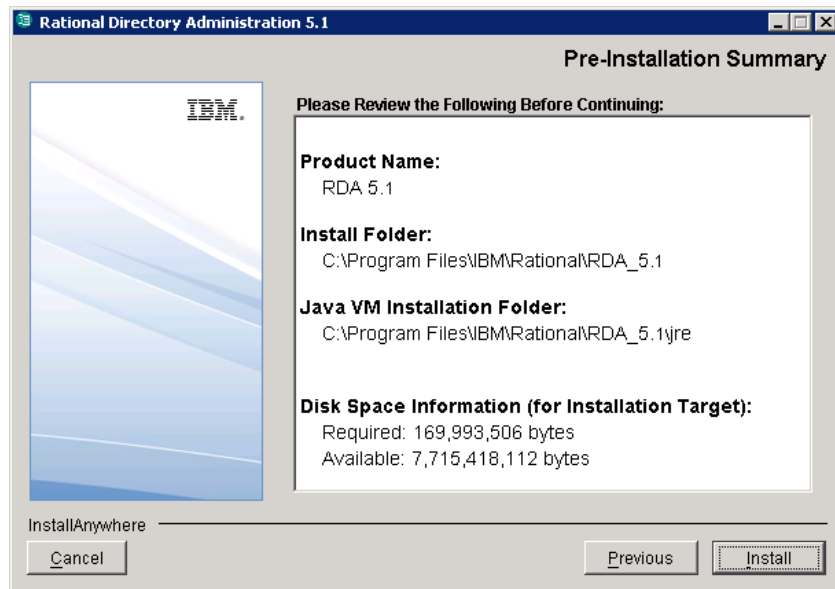


6. Click **Next**. The **Desktop Shortcut** dialog box is displayed. By default, the **Create a shortcut to RDA on the desktop** option is checked. Click to clear the check box if you do not want the shortcut to be created.

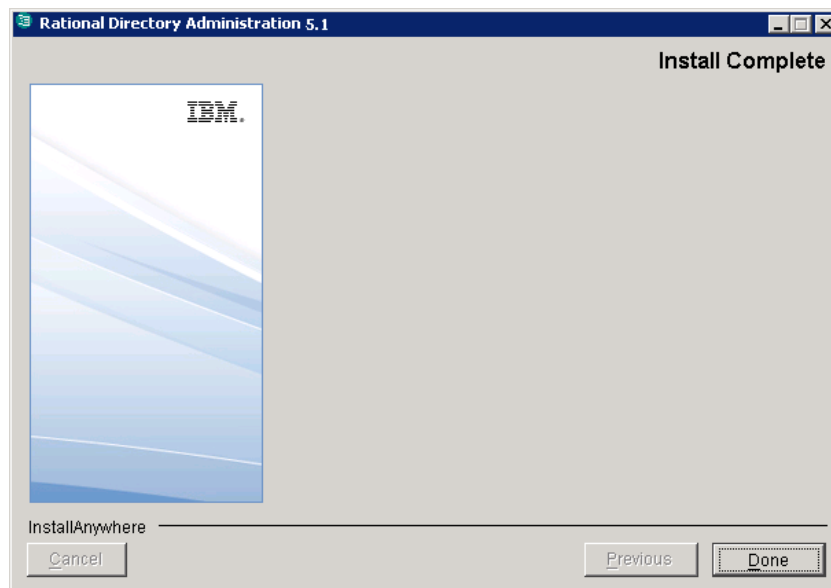


-
7. Click **Next**. The **Pre-Installation Summary** dialog box is displayed. This dialog box displays the installation summary.
 8. Review the information and click **Install**.

The **Install Complete** dialog box is displayed if the installation is successful.



9. Click **Done** to exit the installer.



Note After installing the RDA, **start** the Web server using the following batch script:
<RDS_Install_Dir\WebAccessServer\Start_RDAServer.bat>

6

Client Removal

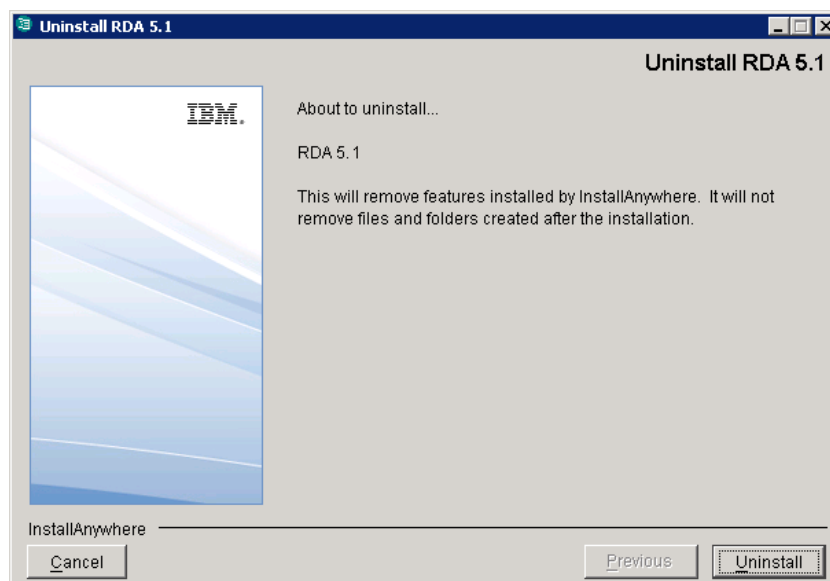
Removing the RDA

This chapter describes the steps required to remove RDA.

To uninstall RDA, do the following:

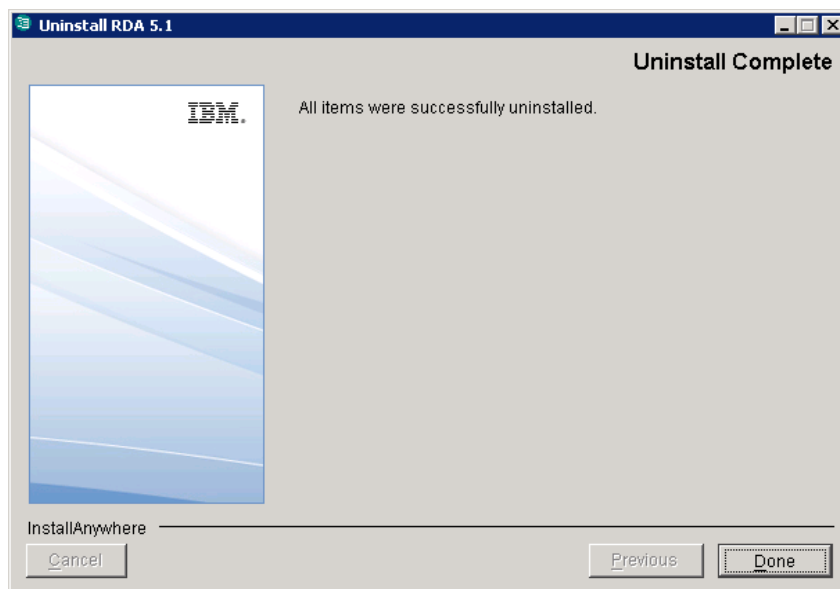
1. Stop the **RDS Web Access Server** by pressing the **CTRL+C** key on the Web Access Server startup console.
2. Remove RDA using one of the options:
 - Use the **Add/Remove Programs** from the Control Panel to remove the RDA.
 - Double-click **Uninstall RDA 5.1.exe** from the path `<RDA_Install_Dir>/UninstallRDA5.1`. The **Uninstall RDA 5.1** dialog box appears.

3. Click **Uninstall** to remove RDA.



4. The **Uninstaller** removes the components one by one. The **Uninstall Complete** dialog box appears if the uninstallation is successful.

-
5. Click **Done** to exit the installer



7

Launching RDA

This chapter describes how to launch the RDA application.

You can launch RDA from any machine by providing the appropriate URL. The Web RDA is supported on Internet Explorer and Mozilla browsers.

Note The RDA web server starts automatically during installation.

To start the RDA, do the following:

1. If the RDA web server is not started automatically, run the following command to **start** the web server.

```
<RDS_Install_Dir>\WebAccessServer\Start_RDAWebServer.bat
```

For example:

```
C:\Program Files\IBM\Rational\RDS_5.1\WebAccessServer\  
Start_RDAWebServer.bat
```

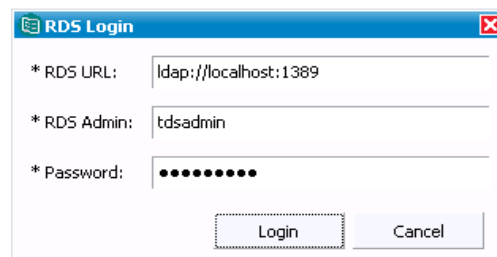
2. Open the browser and type the following URL
`http://<hostname>:8080/webrda/rda.`

For example:

```
http://rdsserver:8080/webrda/rda
```

Note The <hostname> refers to the name of the server where the RDS is installed.

3. The **RDS Login** dialog box is displayed.



4. On the **Login** dialog box, type the details as:

Field Name	Description
RDS URL	<p>The LDAP URL should include a valid server name and a port number that was given at the time of RDS installation.</p> <p>For example: <code>ldap://dirserv:1636</code>.</p> <p>To open the RDS in secure mode, you can include the letter "s" to the <code>ldap</code> URL (where the "s" refers to the secure port), followed by a valid server name and a port number.</p> <p>For example: <code>ldaps://dirserv:1636</code>.</p>
RDS Admin	<p>The admin user name for RDS. The admin user <i>tdsadmin</i> is set by the RDS installer.</p>
Password	<p>The admin user password set at the time of RDS installation.</p>

5. Click **Login**.

8

Troubleshooting RDS

This chapter describes the possible problem and solutions for RDS users.

Problem	Solution
Installation fails with the message "Not enough room for a complete install."	Change the environment variable %TEMP% to point to the path where you have minimum of 1 GB space.
Client cannot locate the server.	Use the host name, such as <i>rdserver</i> . Make sure the server is listed in the name service you are using such as DNS, and try the fully qualified domain name (for example, <i>rdserver.example.com</i>). Use the IP address for the host (for example, <i>192.168.2.60</i>).
Installation fails with the message "server startup fails."	Check the following log files: <ul style="list-style-type: none">• <RDS_Installhome>\logs\createinstance.log• <RDS_Installhome>\logs\createdb.log If there are no errors in these logs, look at the following log file: <InstallRoot>\idsslapd-tdsadmin\logs\ibmslapd.log
Reason for the server installation failure is not known. Cannot find the error log.	The IBM Tivoli Directory Server and RDS log files can be found in the following location: <ul style="list-style-type: none">• <RDS_InstallHome>\logs• <RDS_InstallHome>\RDS_5.1_InstallLog.log• <TivoliInstallHome>\LDAP\V6.2\var• <InstallRootDrive>\idsslapd-tdsadmin\logs• <InstallRootDrive>\TDSADMIN\db2diag.log• <InstallRootDrive>\TDSADMIN\stmmlog

Terms and Concepts

Term	Definition
LDAP	Lightweight Directory Access Protocol. Directory service protocol designed to run over TCP/IP and across multiple platforms.
OS authentication	Operating system authentication is the process of proving the identity of the client user to the Directory Server based on the operating system logon name.
SSL	Secure Sockets Layer. SSL is a software library establishing a secure connection between client and server.
RDS Client	A RDS client is a interface that requests services or information from a server.

Appendix: Notices

© Copyright 2000, 2009

U.S. Government Users Restricted Rights - Use, duplication, or disclosure restricted by GSA ADP Schedule Contract with IBM Corp.

This information was developed for products and services offered in the U.S.A. IBM may not offer the products, services, or features discussed in this document in other countries. Consult your local IBM representative for information on the products and services currently available in your area. Any reference to an IBM product, program, or service is not intended to state or imply that only that IBM product, program, or service may be used. Any functionally equivalent product, program, or service that does not infringe any IBM intellectual property right may be used instead. However, it is the user's responsibility to evaluate and verify the operation of any non-IBM product, program, or service.

IBM may have patents or pending patent applications covering subject matter described in this document. The furnishing of this document does not grant you any license to these patents. You can send written license inquiries to:

IBM Director of Licensing
IBM Corporation
North Castle Drive
Armonk, NY 10504-1785
U.S.A.

For license inquiries regarding double-byte character set (DBCS) information, contact the IBM Intellectual Property Department in your country or send written inquiries to:

IBM World Trade Asia Corporation
Licensing
2-31 Roppongi 3-chome, Minato-ku
Tokyo 106-0032, Japan

The following paragraph does not apply to the United Kingdom or any other country where such provisions are inconsistent with local law:

INTERNATIONAL BUSINESS MACHINES CORPORATION PROVIDES THIS PUBLICATION "AS IS" WITHOUT WARRANTY OF ANY KIND, EITHER EXPRESS OR IMPLIED, INCLUDING, BUT NOT LIMITED TO, THE IMPLIED WARRANTIES OF NON-INFRINGEMENT, MERCHANTABILITY OR FITNESS FOR A PARTICULAR PURPOSE.

Some states do not allow disclaimer of express or implied warranties in certain transactions. Therefore, this statement may not apply to you.

This information could include technical inaccuracies or typographical errors. Changes are periodically made to the information herein; these changes will be incorporated in new editions of the publication. IBM may make improvements and/or changes in the product(s) and/or the program(s) described in this publication at any time without notice.

Any references in this information to non-IBM Web sites are provided for convenience only and do not in any manner serve as an endorsement of those Web sites. The materials at those Web sites are not part of the materials for this IBM product and use of those Web sites is at your own risk.

IBM may use or distribute any of the information you supply in any way it believes appropriate without incurring any obligation to you.

Licensees of this program who wish to have information about it for the purpose of enabling: (i) the exchange of information between independently created programs and other programs (including this one) and (ii) the mutual use of the information which has been exchanged, should contact:

Intellectual Property Dept. for Rational Software
IBM Corporation
1 Rogers Street
Cambridge, Massachusetts 02142
U.S.A.

Such information may be available, subject to appropriate terms and conditions, including in some cases, payment of a fee.

The licensed program described in this document and all licensed material available for it are provided by IBM under terms of the IBM Customer Agreement, IBM International Program License Agreement or any equivalent agreement between us.

Any performance data contained herein was determined in a controlled environment. Therefore, the results obtained in other operating environments may vary significantly. Some measurements may have been made on development-level systems and there is no guarantee that these measurements will be the same on generally available systems. Furthermore, some measurements may have been estimated through extrapolation. Actual results may vary. Users of this document should verify the applicable data for their specific environment.

Information concerning non-IBM products was obtained from the suppliers of those products, their published announcements or other publicly available sources. IBM has not tested those products and cannot confirm the accuracy of performance, compatibility or any other claims related to non-IBM products. Questions on the capabilities of non-IBM products should be addressed to the suppliers of those products.

This information contains examples of data and reports used in daily business operations. To illustrate them as completely as possible, the examples include the names of individuals, companies, brands, and products. All of these names are fictitious and any similarity to the names and addresses used by an actual business enterprise is entirely coincidental.

If you are viewing this information softcopy, the photographs and color illustrations may not appear.

Trademarks

IBM, the IBM logo, and ibm.com are trademarks or registered trademarks of International Business Machines Corp., registered in many jurisdictions worldwide. Other product and service names might be trademarks of IBM or other companies. A current list of IBM trademarks is available on the Web at www.ibm.com/legal/copytrade.html.

Microsoft, Windows, Windows NT, and the Windows logo are trademarks of Microsoft Corporation in the United States, other countries, or both.

Java and all Java-based trademarks and logos are trademarks of Sun

Other company, product or service names may be trademarks or service marks of others..

Index

A

administrator password 30

C

console mode 13

Corporate LDAP backbone support 8

D

DB2ADMNS 14

DB2USERS 14

default LDAP port 9

default LDAP SSL port 9

directory server administrator 30

disk space 12

document conventions 5

E

error logs 49

F

folders created by installer 14

H

host name 28

I

IBM customer support 2

install sequence 7

installation modes 8

installation path 14

installation user 13

L

launching RDA 47

LDAP 51

local user/group 14

M

minimum memory 12

modes of installation 8

O

os authentication 8

R

RDS client 51

removing the RDS 33

S

secure port 29

secure port number 9

server port 28

server port number 9

server startup error 49

SSL 51

starting the Web Server 47

system requirements 11

T

tdsadmin 14

