

**Rational.** Directory Server



Installation Guide



*IBM Rational Directory Server*  
*Installation Guide*  
*Release 5.1.0.1*

Before using this information, be sure to read the general information under Appendix, [“Notices” on page 21](#).

This edition applies to **VERSION 5.1.0.1, IBM Rational Directory Server** and to all subsequent releases and modifications until otherwise indicated in new editions.

© **Copyright IBM Corporation 2006, 2010**

US Government Users Restricted Rights—Use, duplication or disclosure restricted by GSA ADP Schedule Contract with IBM Corp.

---

## *Table of contents*

<b>About this manual</b>	<b>1</b>
Contacting IBM Rational Software Support. . . . .	1
Prerequisites . . . . .	2
Submitting problems . . . . .	2
Conventions used in this guide . . . . .	4
<b>Introduction</b>	<b>5</b>
Obtaining the RDA software . . . . .	5
<b>System Requirements</b>	<b>7</b>
System requirements . . . . .	7
Industry standards. . . . .	7
Operating system requirements . . . . .	7
Disk space and memory requirements. . . . .	8
<b>Client Installation</b>	<b>9</b>
Installing the RDA . . . . .	9
<b>Client Removal</b>	<b>15</b>
Removing the RDA . . . . .	15
<b>Launching RDA</b>	<b>19</b>
<b>Troubleshooting RDS</b>	<b>21</b>
<b>Appendix A: Notices</b>	<b>23</b>
Trademarks. . . . .	26
<b>Index</b>	<b>27</b>



# 1

## About this manual

This manual guides you through the IBM® Rational® Directory Server (RDS) installation and uninstallation.

It contains the following sections:

- [Introduction](#)
- [RDS documentation](#)
- [System Requirements](#)
- [Client Installation](#)
- [Client Removal](#)

### RDS documentation

This section provides the information on the related documents available for RDS. The following RDS documents are available on the Product Support Web site, <http://www.ibm.com/software/rational/support/>

Document Name	Description
Rational Directory Server Installation Guide	Provides information on how to install the RDS.
Rational Directory Server Product Manual	Provides detailed information on RDS features supported in this release.
Rational Directory Server Administration Manual	Provides information on RDS administration.

### Contacting IBM Rational Software Support

If the self-help resources have not provided a resolution to your problem, you can contact IBM® Rational® Software Support for assistance in resolving product issues.

**Note** If you are a heritage Telelogic customer, a single reference site for all support resources is located at <http://www.ibm.com/software/rational/support/telelogic/>

## Prerequisites

To submit your problem to IBM Rational Software Support, you must have an active Passport Advantage® software maintenance agreement. Passport Advantage is the IBM comprehensive software licensing and software maintenance (product upgrades and technical support) offering. You can enroll online in Passport Advantage from <http://www.ibm.com/software/lotus/passportadvantage/howtoenroll.html>

- To learn more about Passport Advantage, visit the Passport Advantage FAQs at [http://www.ibm.com/software/lotus/passportadvantage/brochures\\_faqs\\_quickguides.html](http://www.ibm.com/software/lotus/passportadvantage/brochures_faqs_quickguides.html).
- For further assistance, contact your IBM representative.

To submit your problem online (from the IBM Web site) to IBM Rational Software Support, you must additionally:

- Be a registered user on the IBM Rational Software Support Web site. For details about registering, go to <http://www.ibm.com/software/support/>.
- Be listed as an authorized caller in the service request tool.

## Submitting problems

To submit your problem to IBM Rational Software Support:

1. Determine the business impact of your problem. When you report a problem to IBM, you are asked to supply a severity level. Therefore, you need to understand and assess the business impact of the problem that you are reporting.

Use the following table to determine the severity level.

Severity	Description
1	The problem has a <i>critical</i> business impact: You are unable to use the program, resulting in a critical impact on operations. This condition requires an immediate solution.
2	This problem has a <i>significant</i> business impact: The program is usable, but it is severely limited.



Severity	Description
3	The problem has <i>some</i> business impact: The program is usable, but less significant features (not critical to operations) are unavailable.
4	The problem has <i>minimal</i> business impact: The problem causes little impact on operations or a reasonable circumvention to the problem was implemented.

2. Describe your problem and gather background information, When describing a problem to IBM, be as specific as possible. Include all relevant background information so that IBM Rational Software Support specialists can help you solve the problem efficiently. To save time, know the answers to these questions:
  - What software versions were you running when the problem occurred?  
To determine the exact product name and version, use the option applicable to you:
    - Start the IBM Installation Manager and select **File > View Installed Packages**. Expand a package group and select a package to see the package name and version number.
    - Start your product, and click **Help > About** to see the offering name and version number.
  - What is your operating system and version number (including any service packs or patches)?
  - Do you have logs, traces, and messages that are related to the problem symptoms?
  - Can you recreate the problem? If so, what steps do you perform to recreate the problem?
  - Did you make any changes to the system? For example, did you make changes to the hardware, operating system, networking software, or other system components?
  - Are you currently using a workaround for the problem? If so, be prepared to describe the workaround when you report the problem.
3. Submit your problem to IBM Rational Software Support. You can submit your problem to IBM Rational Software Support in the following ways:
  - **Online:** Go to the IBM Rational Software Support Web site at <https://www.ibm.com/software/rational/support/> and in the Rational support

task navigator, click **Open Service Request**. Select the electronic problem reporting tool, and open a Problem Management Record (PMR), describing the problem accurately in your own words.

For more information about opening a service request, go to <http://www.ibm.com/software/support/help.html>

You can also open an online service request using the IBM Support Assistant. For more information, go to <http://www.ibm.com/software/support/isa/faq.html>.

- **By phone:** For the phone number to call in your country or region, go to the IBM directory of worldwide contacts at <http://www.ibm.com/planetwide/> and click the name of your country or geographic region.
- **Through your IBM Representative:** If you cannot access IBM Rational Software Support online or by phone, contact your IBM Representative. If necessary, your IBM Representative can open a service request for you. You can find complete contact information for each country at <http://www.ibm.com/planetwide/>.

## Conventions used in this guide

Typeface	Description
<i>Italic</i>	Used for book titles and terminology.
<b>Bold</b>	Used for items that you can select and menu paths, also used for emphasis.
Courier	Used for commands, file names, and directory paths. Represents command syntax to be entered verbatim. Signifies computer output that displays on-screen.
Courier Italic	Represents values in a command string that you supply. For example, (drive:\username\commands) .

# 2

## ***Introduction***

The RDS is a single enterprise directory solution designed for user authentication and administration for IBM® Rational® Solutions for Enterprise Lifecycle Management tools. RDS allows the users to login using the same credentials across Enterprise Lifecycle Management tools for which they have authorized access.

RDS is designed to support a wide range of platforms. For more information on the platform support see [Operating system requirements \(page 7\)](#).

RDS 5.1.0.1 supports only client installation. There are no changes to the server side operations. You can update the client by simply installing the RDA on your existing server (RDS 5.0, 5.1) installation.

### **Obtaining the RDA software**

You can download the RDA from the support site or from the zip distribution. After downloading the RDA, make sure you verify the MD5 checksum available under the support site, <http://www.ibm.com/software/rational/support/> matches the downloaded installer. This will ensure that the downloaded installer is not corrupted.



# 3

## System Requirements

The following section includes the system requirements for RDA.

This chapter contains the following sections:

- [System requirements](#)
- [Disk space and memory requirements](#)

### System requirements

The following section includes the system requirements for the RDA.

#### Operating system requirements

The RDA is supported on the following platforms:

- Microsoft Windows 2003 Standard, Enterprise Edition
- Microsoft Windows XP SP2
- Microsoft Windows Vista

#### Disk space and memory requirements

##### System requirements for RDA

Ensure that sufficient disk space is available before installing the RDA. The following table shows the minimum disk space requirement for RDA.

Minimum disk space required	Minimum memory required
300 MB	512 MB RAM (✓) and a 350MHz Pentium processor for Windows.



# 4

## Client Installation

IBM® Rational® Directory Administration (RDA) is a GUI based client application used to perform day-to-day administration tasks such as creating users, groups, roles, performing searches, migrating data, etc.

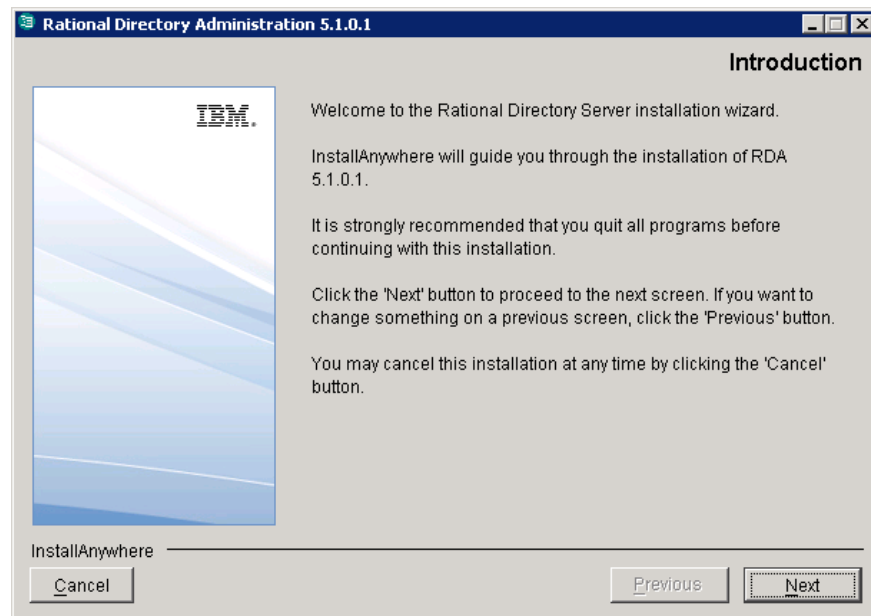
RDA is available as a web-based tool that you can access using a browser.

### Installing the RDA

This chapter describes the steps required to install RDA. To start the installation, first unzip the RDA installer in a folder using the WinZip utility. Then, follow the installation procedure below.

To install RDA do the following:

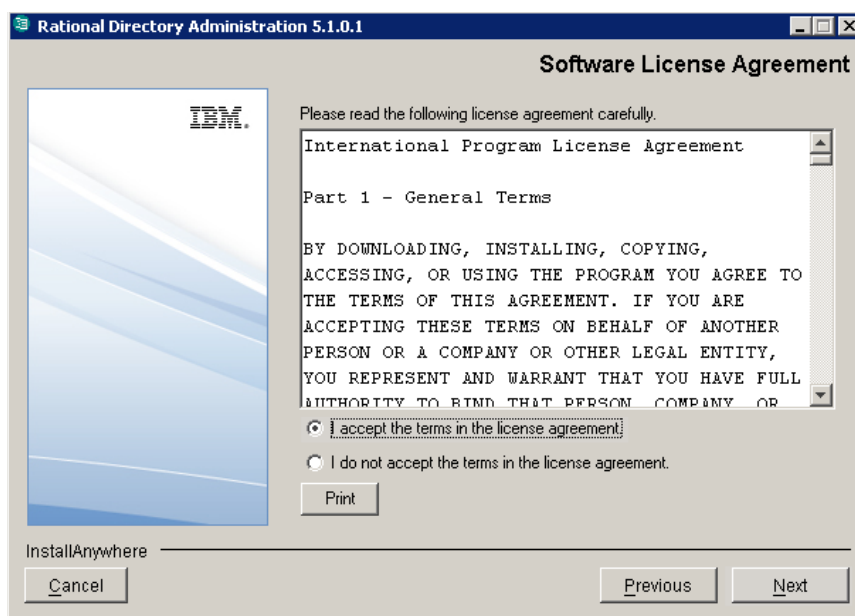
1. Open the <RDA Image>\Install folder and double-click the **RDA.exe**. The **Introduction** dialog box is displayed.



2. Click **Next**. The **License Agreement** dialog box is displayed.
3. You can also save the licence details in a document.

To copy the license information do the following:

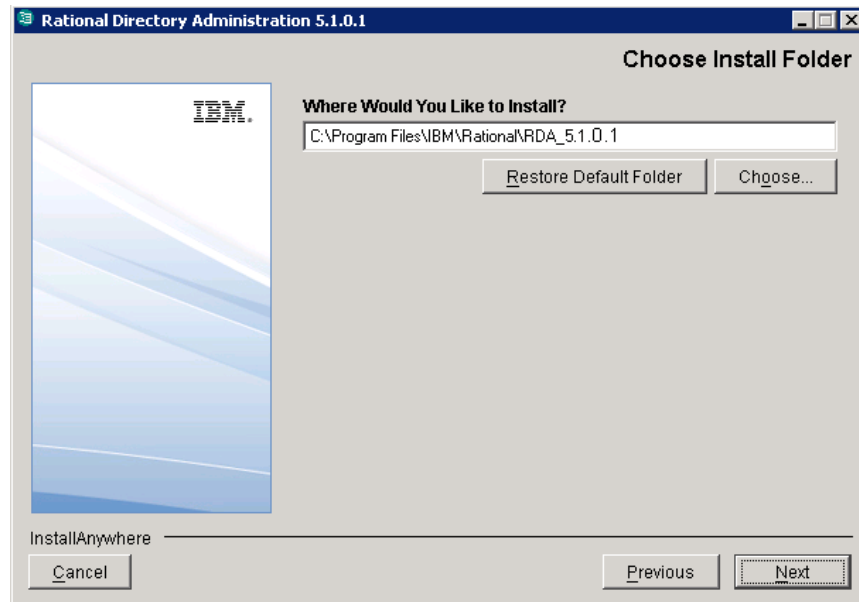
- Right click on the license window and click **Select All**, and then click **Copy**.
  - Open any file, paste the license information and save the file.
4. Review and click **I accept the terms of the license agreement**.



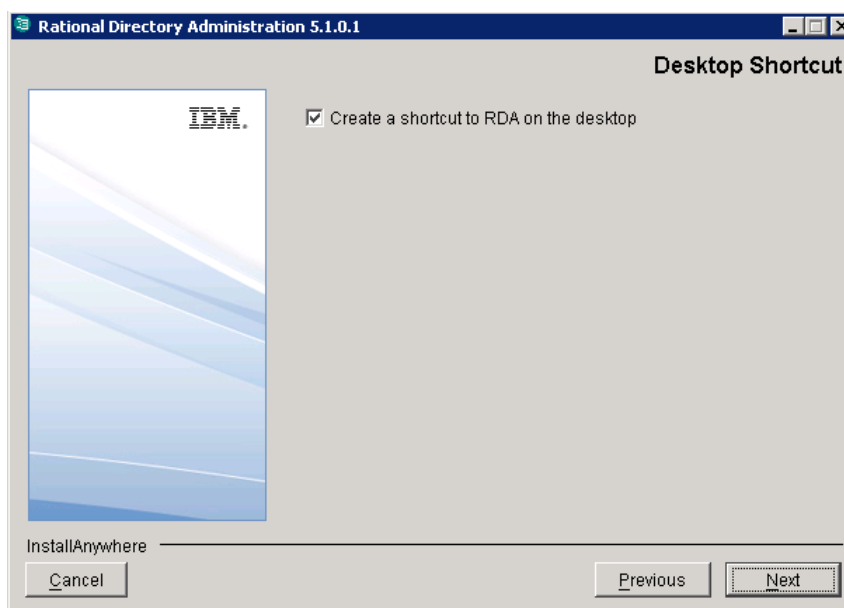


- 
5. Click **Next**. The **Choose Install Folder** dialog box is displayed.

You can use the default location provided by the installer or click **Choose** to specify a different location. You can also edit the path manually by clicking anywhere in the text box. To use the default location, click **Restore Default Folder**. This restores the default location provided by the installer.



6. Click **Next**. The **Desktop Shortcut** dialog box is displayed. By default, the **Create a shortcut to RDA on the desktop** option is checked. Click to clear the check box if you do not want the shortcut to be created.

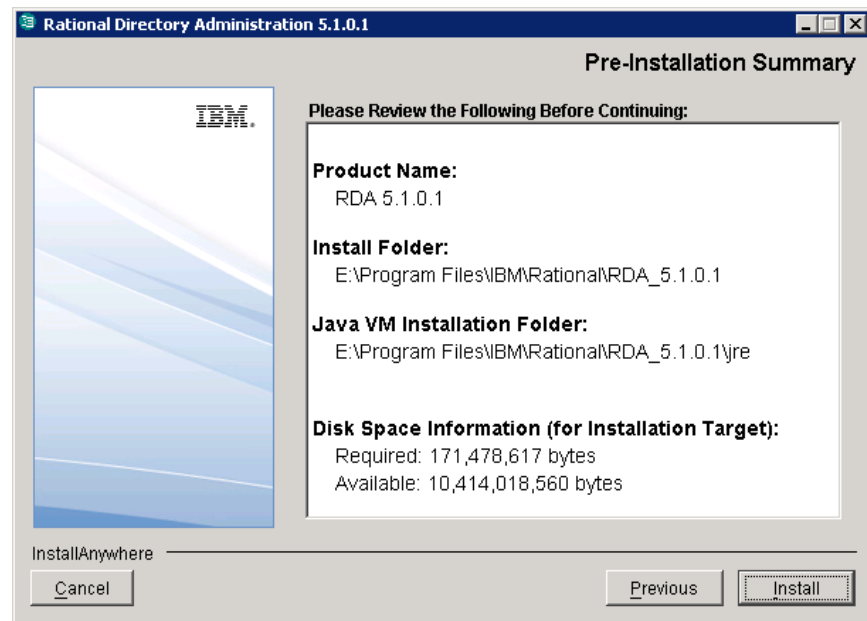


---

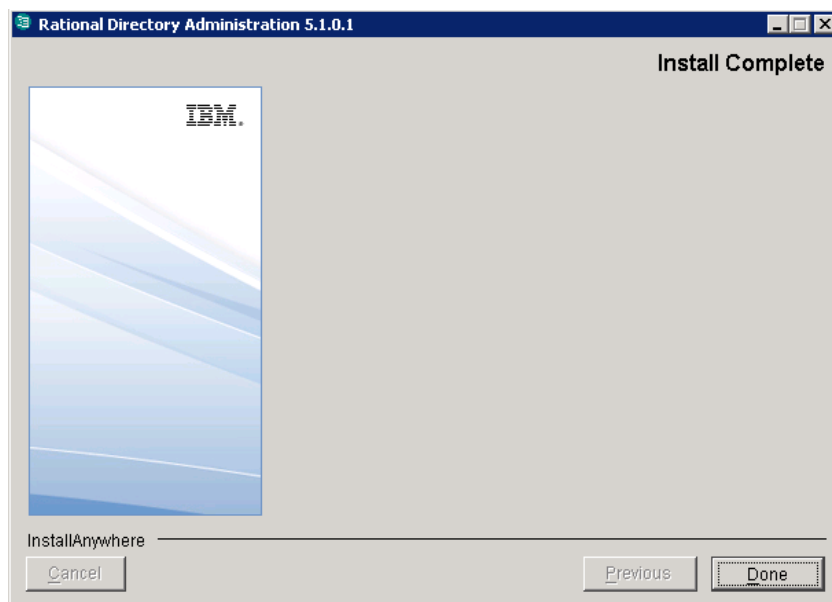
7. Click **Next**. The **Pre-Installation Summary** dialog box is displayed. This dialog box displays the installation summary.

8. Review the information and click **Install**.

The **Install Complete** dialog box is displayed if the installation is successful.



9. Click **Done** to exit the installer.



**Note** After installing the RDA, **start** the Web server using the following batch script:  
<RDS\_Install\_Dir\WebAccessServer\Start\_RDAServer.bat>

# 5

## Client Removal

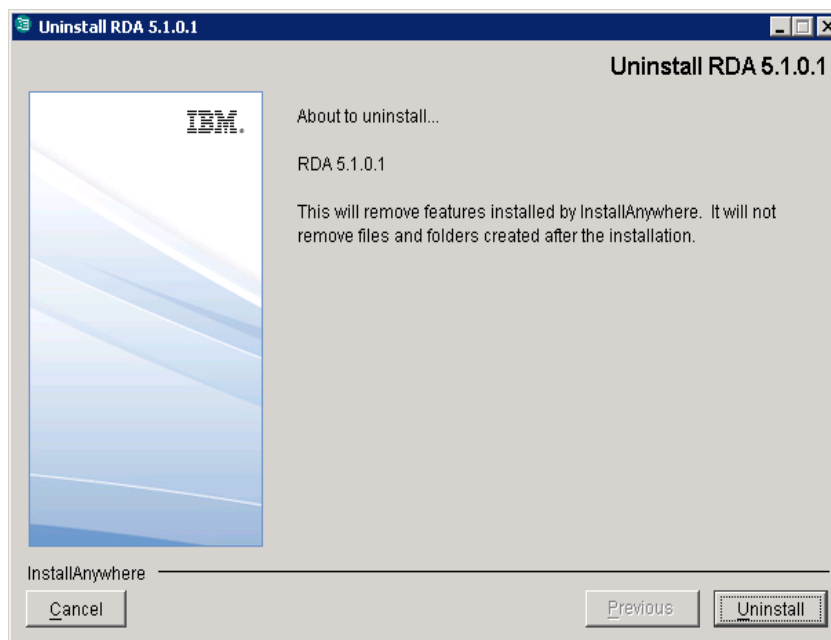
### Removing the RDA

This chapter describes the steps required to remove RDA.

To uninstall RDA, do the following:

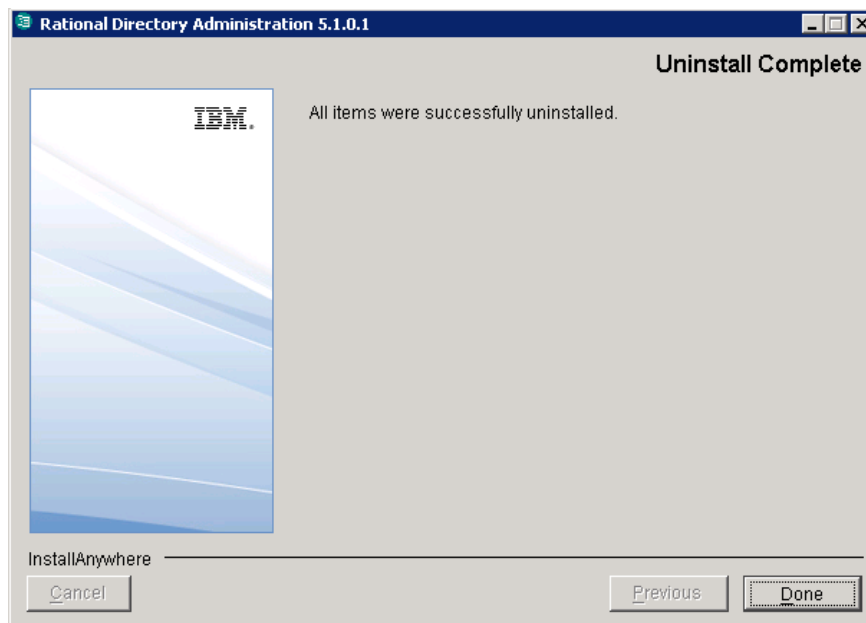
1. Stop the **RDS Web Access Server** by pressing the **CTRL+C** key on the Web Access Server startup console.
2. Remove RDA using one of the options:
  - Use the **Add/Remove Programs** from the Control Panel to remove the RDA.
  - Double-click **Uninstall RDA 5.1.0.1.exe** from the path `<RDA_Install_Dir>/UninstallRDA5.1.0.1`. The **Uninstall RDA 5.1.0.1** dialog box appears.

3. Click **Uninstall** to remove RDA.



4. The **Uninstaller** removes the components one by one. The **Uninstall Complete** dialog box appears if the uninstallation is successful.

- 
5. Click **Done** to exit the installer







# 6

## Launching RDA

This chapter describes how to launch the RDA application.

You can launch RDA from any machine by providing the appropriate URL. The Web RDA is supported on Internet Explorer and Mozilla browsers.

**Note** The RDA web server starts automatically during installation.

To start the RDA, do the following:

1. If the RDA web server is not started automatically, run the following command to **start** the web server.

```
<RDS_Install_Dir>\WebAccessServer\Start_RDAServer.bat
```

For example:

```
C:\Program  
Files\IBM\Rational\RDS_5.1.0.1\WebAccessServer\  
Start_RDAServer.bat
```

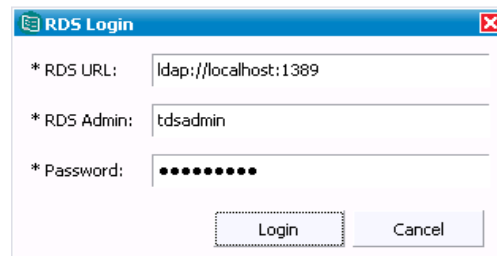
2. Open the browser and type the following URL  
`http://<hostname>:8080/webrda/rda.`

For example:

```
http://rdsserver:8080/webrda/rda
```

**Note** The <hostname> refers to the name of the server where the RDS is installed.

3. The **RDS Login** dialog box is displayed.



4. On the **Login** dialog box, type the details as:

Field Name	Description
<b>RDS URL</b>	<p>The LDAP URL should include a valid server name and a port number that was given at the time of RDS installation.</p> <p>For example: <code>ldap://dirserv:1636</code>.</p> <p>To open the RDS in secure mode, you can include the letter "s" to the ldap URL (where the "s" refers to the secure port), followed by a valid server name and a port number.</p> <p>For example: <code>ldaps://dirserv:1636</code>.</p>
<b>RDS Admin</b>	<p>The admin user name for RDS. The admin user <i>tdsadmin</i> is set by the RDS installer.</p>
<b>Password</b>	<p>The admin user password set at the time of RDS installation.</p>

5. Click **Login**.

## **Appendix: Notices**

© Copyright 2000, 2010

U.S. Government Users Restricted Rights - Use, duplication, or disclosure restricted by GSA ADP Schedule Contract with IBM Corp.

This information was developed for products and services offered in the U.S.A. IBM may not offer the products, services, or features discussed in this document in other countries. Consult your local IBM representative for information on the products and services currently available in your area. Any reference to an IBM product, program, or service is not intended to state or imply that only that IBM product, program, or service may be used. Any functionally equivalent product, program, or service that does not infringe any IBM intellectual property right may be used instead. However, it is the user's responsibility to evaluate and verify the operation of any non-IBM product, program, or service.

IBM may have patents or pending patent applications covering subject matter described in this document. The furnishing of this document does not grant you any license to these patents. You can send written license inquiries to:

IBM Director of Licensing  
IBM Corporation  
North Castle Drive  
Armonk, NY 10504-1785  
U.S.A.

For license inquiries regarding double-byte character set (DBCS) information, contact the IBM Intellectual Property Department in your country or send written inquiries to:

IBM World Trade Asia Corporation  
Licensing  
2-31 Roppongi 3-chome, Minato-ku  
Tokyo 106-0032, Japan

The following paragraph does not apply to the United Kingdom or any other country where such provisions are inconsistent with local law:

INTERNATIONAL BUSINESS MACHINES CORPORATION PROVIDES THIS PUBLICATION "AS IS" WITHOUT WARRANTY OF ANY KIND, EITHER EXPRESS OR IMPLIED, INCLUDING, BUT NOT LIMITED TO, THE IMPLIED WARRANTIES OF NON-INFRINGEMENT, MERCHANTABILITY OR FITNESS FOR A PARTICULAR PURPOSE.

Some states do not allow disclaimer of express or implied warranties in certain transactions. Therefore, this statement may not apply to you.

This information could include technical inaccuracies or typographical errors. Changes are periodically made to the information herein; these changes will be incorporated in new editions of the publication. IBM may make improvements and/or changes in the product(s) and/or the program(s) described in this publication at any time without notice.

Any references in this information to non-IBM Web sites are provided for convenience only and do not in any manner serve as an endorsement of those Web sites. The materials at those Web sites are not part of the materials for this IBM product and use of those Web sites is at your own risk.

IBM may use or distribute any of the information you supply in any way it believes appropriate without incurring any obligation to you.

Licensees of this program who wish to have information about it for the purpose of enabling: (i) the exchange of information between independently created programs and other programs (including this one) and (ii) the mutual use of the information which has been exchanged, should contact:

Intellectual Property Dept. for Rational Software  
IBM Corporation  
1 Rogers Street  
Cambridge, Massachusetts 02142  
U.S.A.

Such information may be available, subject to appropriate terms and conditions, including in some cases, payment of a fee.

The licensed program described in this document and all licensed material available for it are provided by IBM under terms of the IBM Customer Agreement, IBM International Program License Agreement or any equivalent agreement between us.

Any performance data contained herein was determined in a controlled environment. Therefore, the results obtained in other operating environments may vary significantly. Some measurements may have been made on development-level systems and there is no guarantee that these measurements will be the same on generally available systems. Furthermore, some measurements may have been estimated through extrapolation. Actual results may vary. Users of this document should verify the applicable data for their specific environment.

---

Information concerning non-IBM products was obtained from the suppliers of those products, their published announcements or other publicly available sources. IBM has not tested those products and cannot confirm the accuracy of performance, compatibility or any other claims related to non-IBM products. Questions on the capabilities of non-IBM products should be addressed to the suppliers of those products.

This information contains examples of data and reports used in daily business operations. To illustrate them as completely as possible, the examples include the names of individuals, companies, brands, and products. All of these names are fictitious and any similarity to the names and addresses used by an actual business enterprise is entirely coincidental.

If you are viewing this information softcopy, the photographs and color illustrations may not appear.

## Trademarks

IBM, the IBM logo, and ibm.com are trademarks or registered trademarks of International Business Machines Corp., registered in many jurisdictions worldwide. Other product and service names might be trademarks of IBM or other companies. A current list of IBM trademarks is available on the Web at [www.ibm.com/legal/copytrade.html](http://www.ibm.com/legal/copytrade.html).

Microsoft, Windows, Windows NT, and the Windows logo are trademarks of Microsoft Corporation in the United States, other countries, or both.

Java and all Java-based trademarks and logos are trademarks of Sun

Other company, product or service names may be trademarks or service marks of others.

## **Index**

### **A**

about RDS 5

### **D**

document conventions 4

### **I**

IBM customer support 1

installing RDA 9

### **L**

launching RDA 19

### **O**

obtaining RDA 5

### **S**

server startup error 21

starting the Web Server 19

system requirements

