

Telelogic D00RS

Telelogic D00RS for Microsoft Team
Foundation Server Add On User Guide



Telelogic DOORS TFS

Using Telelogic DOORS TFS

Release 2.0.0.0

This edition applies to **VERSION 2.0.0.0, Telelogic DOORS TFS Integration** and to all subsequent releases and modifications until otherwise indicated in new editions.

© **Copyright IBM Corporation 2008, 2009** US Government Users Restricted Rights—Use, duplication or disclosure restricted by GSA ADP Schedule Contract with IBM Corp.®

Chapter 1: Why Integrate DOORS And TFS **5**

Chapter 2: How It Works **6**

Chapter 3: What's New in Version 2 **7**

Embedded IntegrationForms 8

- DOORS Icon Header 8
- Custom DOORS Links Tab Panel 9
- Drag and Drop Linking Header Banner 10

TFS DOORS Floating Menu 10

Create New Tasks From DOORS Requirements 11

- DOORS: Create Task Tab 11
 - Tasks Created Section 11
 - DOORS Objects Section. 11
 - Make Links: 11

Custom DOORS Link Type And Edit Form..... 12

- Custom Link Edit Form 12
- View Value Buttons 13
- Navigate To Linked DOORS Object 13
- Expand To Compare With Current DOORS Values 14
- Real Time Report View. 14
- Auto DOORS Start Up 15
- Non DoorsLinkType support 15

Chapter 4: Connect Visual Studio To Team Server **16**

Chapter 5: Starting TFS Explorer in Visual Studio **18**

Chapter 6: Creating Links: **22**

Create Links Using DOORS Icon Anchor. 22

DOORS Links Tab Panel 23

Create Multiple Links..... 24

| | |
|--|-----------|
| Location: DOORS TFS Menu DOORS:Linking Tab. | 24 |
| Chapter 7: Synchronize Work Items | 25 |
| Synchronize: Multiple WorkItems | 25 |
| Synchronize: Single WorkItem | 26 |
| | 28 |
| Synchronize Warning And Error Messages. | 28 |
| Synchronize: Suspect Link Flag does not exist in DOORS | 28 |
| Synchronize: CANCELED | 28 |
| Synchronize: Completed | 28 |
| Viewing Synch Results in DOORS | 29 |
| Chapter 8: Message Ouput Display and Logging | 31 |
| Report Dialog: | 31 |
| Visual Studio Output Window: | 31 |
| | 31 |
| Chapter 9: Detecting Suspect Changes | 32 |
| Link Attribute Change History | 32 |

1

Why Integrate DOORS And TFS

The DOORS TFS integration provides the ability to associate a DOORS Object to one or more TFS workItems. The reverse is true in that one work Item can be associated with multiple DOORS Objects. These associations allow the ability to import, export, and store data between the two linked items in the two separate products.

The value in these associations is that it provides a physical link between Requirements and the development items required to implement the requirements. This 'link' allows the ability to better track and status the progress of a development, project or program. The integration (link) provides a method to communicate change in both directions. It also provides a record of events and changes that can be used for auditing purposes.

For instance: A customer wants to make a change to a system being developed, that change needs to be communicated from the Systems Engineers to the Software Developers. In today's world the customer, Systems Engineers, and Developers can all be in different geographic regions around the world. So the decision to accept and implement the customer change occurs on one side of the World and time zone. The next morning the developers can check and receive notification of the change and then begin the implementation process of the new change.

In this same scenario the integration can help track the impact of the customer change to the schedule and cost. As development incurs the change, resources are assigned to the 'task' or 'enhancement request', schedule changes are noted on the TFS workItems by changing delivery dates, Cost changes are noted by additional hours required for development and Testing. This information can be exported to DOORS, where Engineering and Management can be informed of the change/impacts and develop more accurate schedule and cost reports

2

How It Works

When a link is created between a workItem and a DOORS Object, the integration creates two (2) links for every link. In DOORS, a new External Link is created on the DOORS Object and contains the TFS workItem URI information. On the Team System side, a new external link is created on the WorkItem which contains the URI information of the DOORS Object. In addition to the new Team System WorkItem link - a new item (DoorsProxy) is also created. This new item acts as the Links data storage object.

Note Users should not ever create a DoorsProxy object from the TFS New Item menu. Only the DOORS TFS integration should ever create these items.

The shared data between DOORS and TFS works like this: When a create link or Synchronize operation occurs, the Visual Studio TFS workItem scans it's links to find any that point to a DOORS Object. It then retrieves from DOORS the Object's most current attribute data values for a defined set of attributes. This data is then used to update the attribute values of the DoorsProxy item for that link. Then the TFS workItem data is exported to DOORS for a defined set of attributes. The data is then used to update the attribute values of the DOORS Objects's External Link Attributes.

3

What's New in Version 2

- Embedded Integration Forms

Custom forms and controls can be configured to appear as part of the standard workitem form within the Visual Studio Environment. Most of the integration operations can now be performed from these new controls.

- New TFS Floating Menu

The version 1 integration relied on a floating interface dialog to support its link creation and management operations. Version 2 makes use of the embedded controls for most link management operations. Because of this, the version 1 interface was replaced with a new floating menu which is used mainly for performing Synchronize and Linking operations on multiple workitems or DOORS objects.

- Create New Tasks from DOORS Requirements

New workitems of type 'Task' can be generated from DOORS objects. This can be used to initially populate your projects or quickly add and link new requirement initiated tasks to existing projects.

- Custom DOORS Link Edit Form

When links of DoorsLinkType are edited, a custom form is provided to allow integration operations on a single link level. Viewing imported attributes, synchronizing, and navigation are available from this single form.

- Reportable Link Attributes

Workitem custom link attributes are not available for reporting in a standard configuration. TFS DOORS works around this problem by providing a new workitem type '**Doors Proxy**' where the imported data from DOORS is stored. Since this is a form of workitem type its data fields can be included in standard queries.

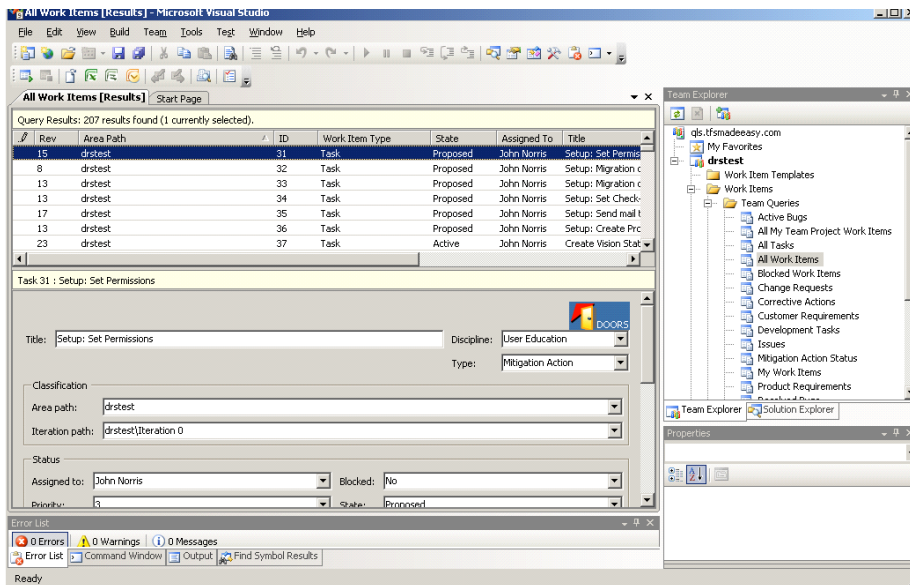
Embedded IntegrationForms

Version 2 of the DOORS TFS integration provides a new and more capable interface design. Creation and managing of Links between TFS WorkItems and DOORS objects is now embedded within the WorkItem forms as part of Visual Studio Team System. The following section introduces the new embedded interfaces describing where they appear and how to access them.

DOORS Icon Header



A DOORS icon appears on the WorkItem **Task** form as part of the form's header banner. This icon is used as a grabbing point to allow the user to drag the workItem to a DOORS Object to make a new link. Just grab the icon and drag over to a DOORS object and drop.



Note Reverse Drag Drop from DOORS is not activated at this time., use the DOORS Links Tab instead.

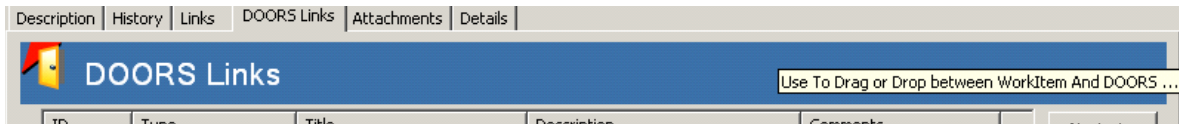
Custom DOORS Links Tab Panel

| ID | Type | Title | Description | Comments |
|----|--------------------|-----------------------------|----------------------------------|--------------------------|
| 0 | DoorsLinkType | ID: UC1 Module: Novembe... | new use case text 2:51 | vstfs:///WorkItemTrac... |
| 1 | DoorsLinkType | ID: UC5 Module: Novembe... | this is a test for sectio n1 | vstfs:///WorkItemTrac... |
| 2 | DoorsLinkType | ID: UC7 Module: Novembe... | this is an inserted section | vstfs:///WorkItemTrac... |
| 3 | DoorsLinkType | ID: UC11 Module: Novemb... | insert at pos 4 | vstfs:///WorkItemTrac... |
| 4 | WorkItem Hyperlink | doors://JOHN3:36679/?ver... | doors://JOHN3:36679/?version=... | vstfs:///WorkItemTrac... |
| 5 | WorkItem Hyperlink | doors://JOHN3:36679/?ver... | doors://JOHN3:36679/?version=... | vstfs:///WorkItemTrac... |

A new Custom Tab panel can be added to workitem forms that will display links to DOORS targets. This includes any pre-Existing links to DOORS of different link types such as Work Item Hyperlink.. This form provides all link **Creation, Deletion, Synchronization,** and **Navigation** functions. (See Installation and Configuration for adding to WorkItem Forms.

- **Navigation**
Select and link and then select the 'Navigation' button to navigate to the DOORS object in DOORS.
- **Delete**
You may select one or more links then select 'Delete' button. This will permanently remove the links between this workItem and the target DOORS Object(s). If the link is unable to be deleted an info message or Report message will be displayed.
- **Synchronize**
Selecting the 'Synchronize' button will attempt to synchronize all of the links shown in the display. Any errors or warnings will be displayed in a Report Window that opens when synchronize begins.. If you wish to only synchronize one link use the Custom Link Edit Form which can be accessed from the standard 'Links' tab through the 'Edit' button.
- **Attributes**
To view all of the imported attributes from DOORS for the selected link, click on the 'Attributes' Button. This will display the DoorsProxy Form which is used to store imported DOORS data for each link. (See DOORS Proxy Object for more information)

Drag and Drop Linking Header Banner

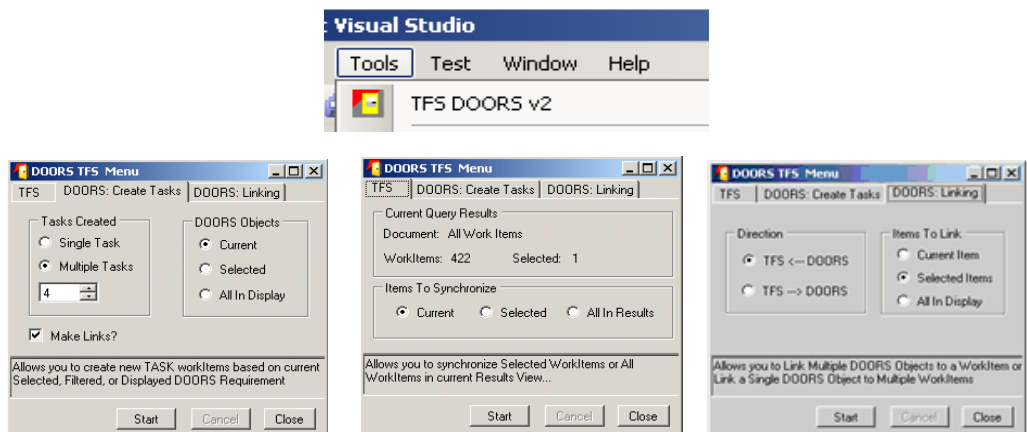


You may create links by dragging from the Blue Header Banner to DOORS and dropping on an Object OR you may Drag from DOORS a single object and Drop onto the Blue Header Banner.. You may also Drop DOORS objects onto the Links Grid List View..

| ID | Type | Title | Description | Comments |
|----|--------------------|------------------------------|-----------------------------------|--------------------------|
| 0 | DoorsLinkType | ID: UC1 Module: Novembe... | new use case text 2:51 | vstfs:///WorkItemTrac... |
| 1 | DoorsLinkType | ID: UC5 Module: Novembe... | this is a test for sectio n1 | vstfs:///WorkItemTrac... |
| 2 | DoorsLinkType | ID: UC7 Module: Novembe... | this is an inserted section | vstfs:///WorkItemTrac... |
| 3 | DoorsLinkType | ID: UC11 Module: Novemb... | insert at pos 4 | vstfs:///WorkItemTrac... |
| 4 | Workitem Hyperlink | doors:///JOHN3:36679/?ver... | doors:///JOHN3:36679/?version=... | |
| 5 | Workitem Hyperlink | doors:///JOHN3:36679/?ver... | doors:///JOHN3:36679/?version=... | vstfs:///WorkItemTrac... |

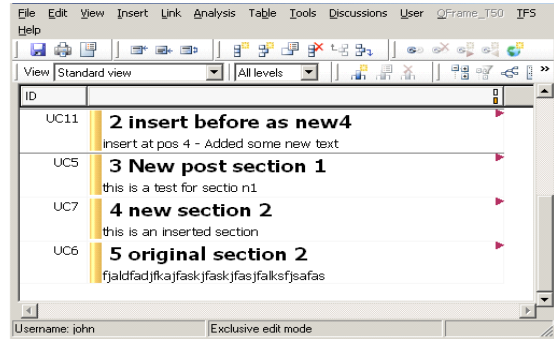
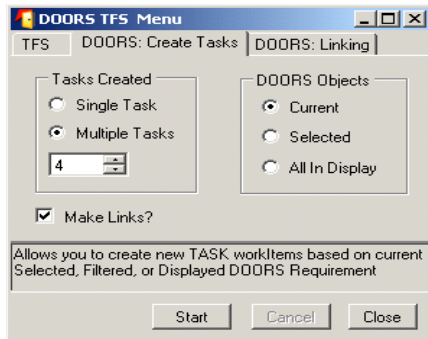
TFS DOORS Floating Menu

Activating the Studio Tools menu option for TFS DOORS will now display the below Multi-function Tabbed Menu dialog. The version 1 integration relied on a floating interface dialog to support it's link creation and management operations. Version 2 makes use of the embedded controls for most link management operations. Because of this, the version 1 interface was replaced with a new floating menu which is used for performing Synchronize and Linking operations on multiple workitems or DOORS objects



Create New Tasks From DOORS Requirements

DOORS: Create Task Tab



Create Tasks Tab option allows you to generate NEW TFS Task WorkItems based on Selected or Filtered DOORS objects.. You may also generate multiple task items based off of one (1) DOORS Requirement object. The DOORS Object Text will become the Task's Description. If there is Object heading text that will become the Task's Title or if no Heading text then the DOORS object identifier is used for the Task's Title. The create links option is defaulted to (YES) so that new tasks are created and linked at the same time..

Tasks Created Section

- **Single:** Once Task for each DOORS Object
- **Multiple:** N number of Tasks for each DOORS Object

DOORS Objects Section

- **Current:** Current DOORS Object
- **Selected:** Selected DOORS Objects using shift-click:
- **All In Display:** All Objects in Current Display or Filtered Display

Make Links:

- If checked then links will be created between the new task item and the DOORS Object

To create a single new task for each DOORS Object selected or filtered, set the 'Single' option of the 'Tasks Created' section. Then select 'Current' for current Object, 'Selected' for a selected group of Objects or 'All In Display' to use all Objects in the current DOORS display.

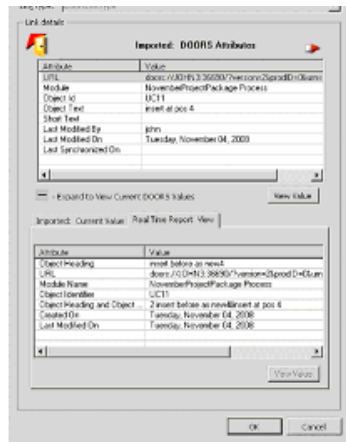
To create more than one task per DOORS Object set the 'Multiple Task' option and then select from the numeric option list the number of tasks to create. These task will contain the same data with the exception of when the DOORS object being used has no Object Heading text and in that case the Object identifier is used as the title of the new task

Select the 'Start' button, a confirmation prompt should appear indicating how many new tasks are about to be created. Selecting 'OK' will start the operation and will also open a 'Report Dialog' to display messages and warnings for each task being created.

CANCEL can be invoked from either the Menu dialog or from the Report Dialog.

Custom DOORS Link Type And Edit Form

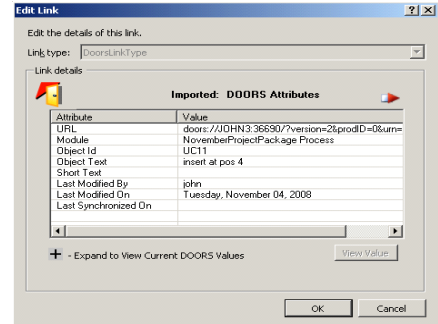
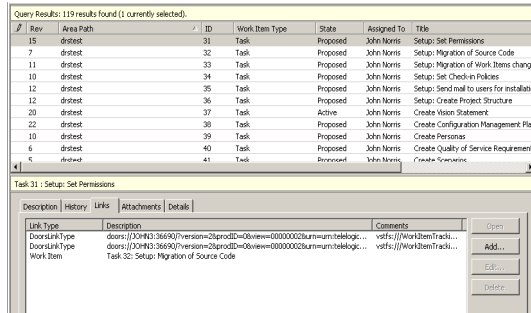
Custom Link Edit Form



The DoorsLink edit form is a multi-function form that allows you to:

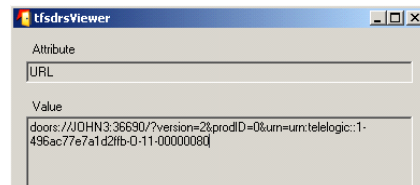
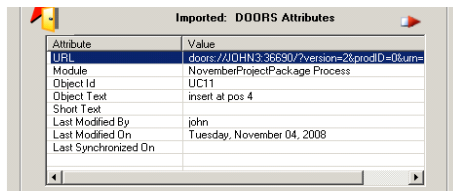
- View the link attributes imported from DOORS.
- Perform an attribute value compare to the current values in DOORS
- Perform a single link synchronize
- View Configured Real Time Report attributes.

To access the link edit dialog, select a link of type 'DoorsLinkType' and then select the 'Edit' option button



View Value Buttons

Select a row in the attribute view list and then select the “View Value” button, a separate dialog will display and show the full value of the attribute being displayed...



Navigate To Linked DOORS Object

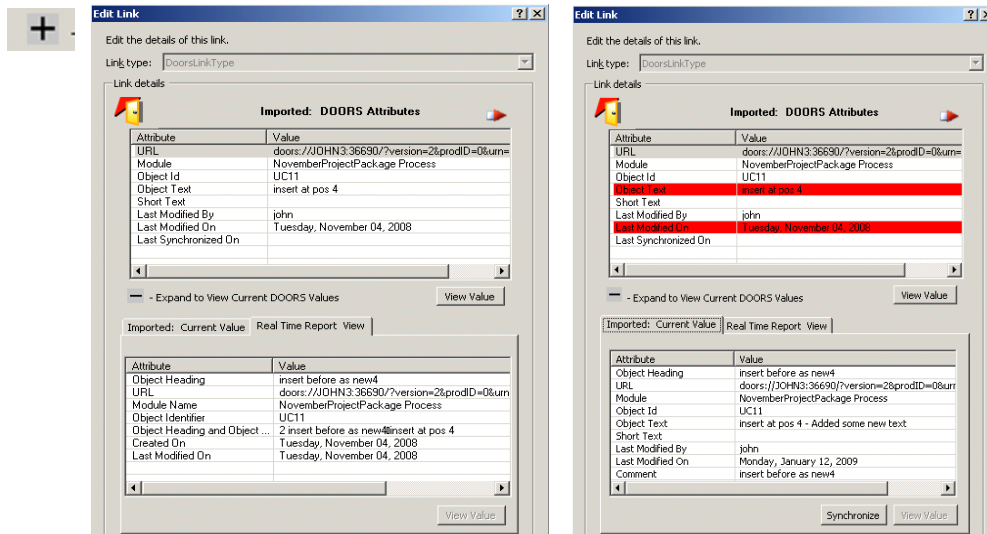
Navigation to the linked DOORS Object can be accomplished by double clicking on the



‘Navigate’ icon shown above. If DOORS is not already started, the navigate action will start a new DOORS session and prompt the user to login. Upon startup completion, navigation will open the DOORS module and select the target object.

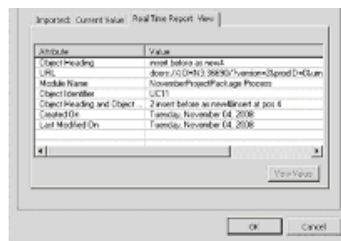
Note If the linked object does not reside in the current database or has been removed, a message dialog will display indicating the cause for the failure.

Expand To Compare With Current DOORS Values



Clicking on the plus (+) button, will expand the form to display another list panel. When the form expands it compares the stored Link Attribute data to the current DOORS Object data – if there is a difference - the stored data items will highlight in “Red” as shown above. At this time the “**Synchronize**” button is enabled and if selected the link data is updated from DOORS for this link only

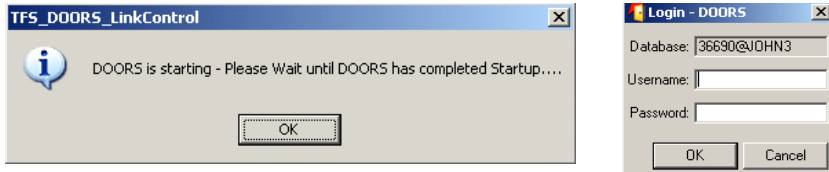
Real Time Report View



The same V1 capability exists where you can configure and display your own view of other DOORS attributes not included in the Synch/import. These values are not stored with the link and are for viewing only.

Auto DOORS Start Up

When DOORS is needed the V2 integration will attempt to start DOORS automatically and then post an Acknowledg dialog that should be “OK”ed after you have logged into DOORS and it has completed the startup sequence..

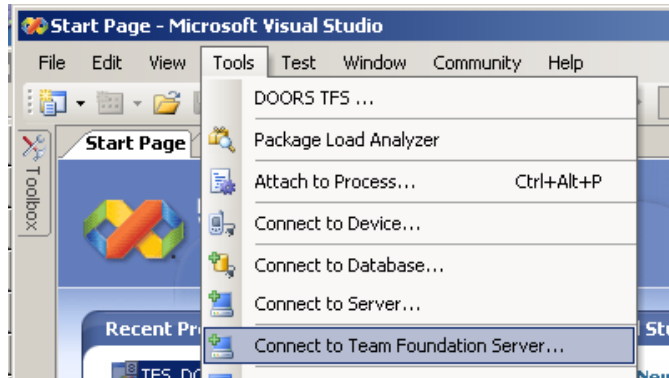


Non DoorsLinkType support

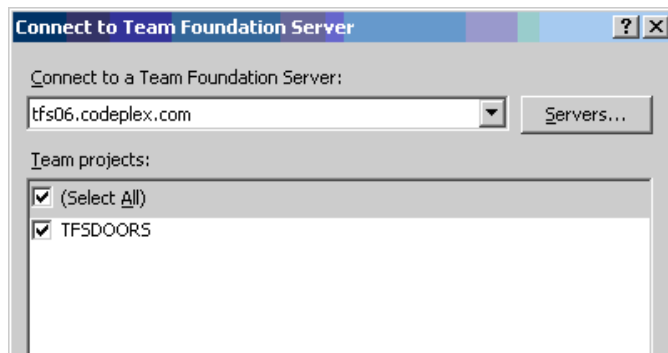
The integration supports links created in Version 1 and treats them as DOORS links.. The main difference is that existing links are still limited to only one attribute to be configured (they are not converted to the new link type).. However new links can be created using types such as “Workitem Hyperlink” and these new links will store the new additional DOORS data. There is a drawback and that is only links of “DoorsLinkType” can be opened using the New Custom Link Edit Form.

4

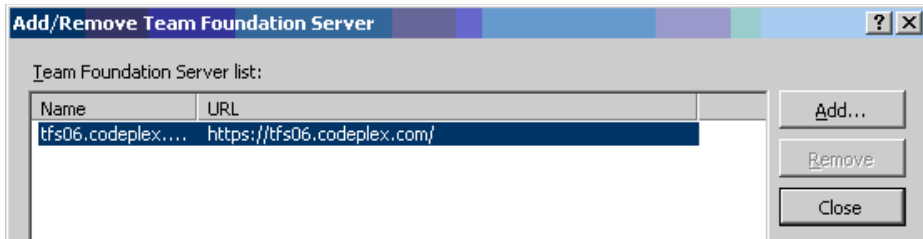
Connect Visual Studio To Team Server



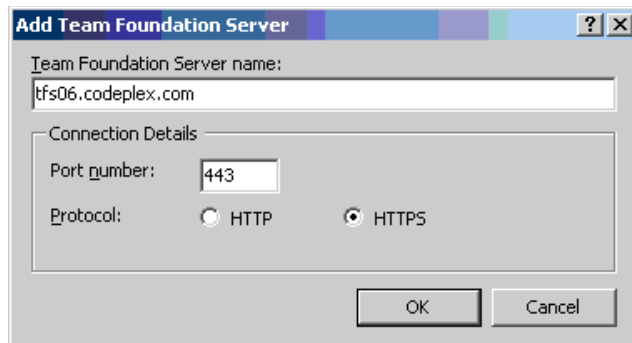
1. From the Visual Studio Tools menus select 'Connect to Team Foundation Server..' option



2. Click "Servers..." button to list existing servers and to add a new server.



3. Click “Add...” Button to add a new server.



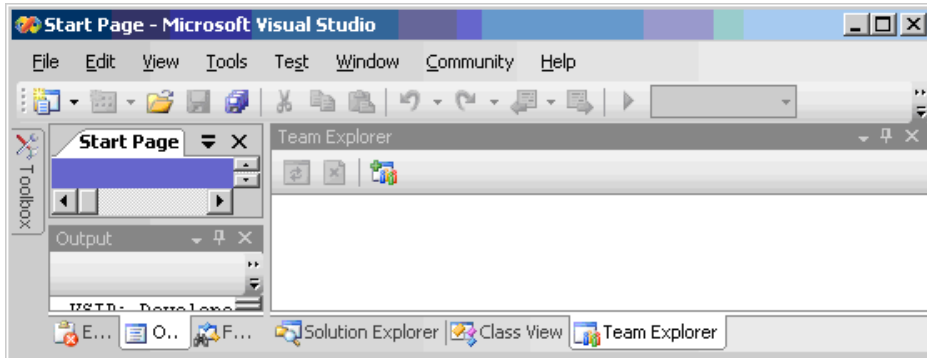
4. Enter in Server name: , Port number, and check Protocol options based on your TFS Visual Studio server configuration. Then click OK to accept new entry.
5. You are now ready to start ‘Team Explorer’ and execute the DOORS TFS integration.

5

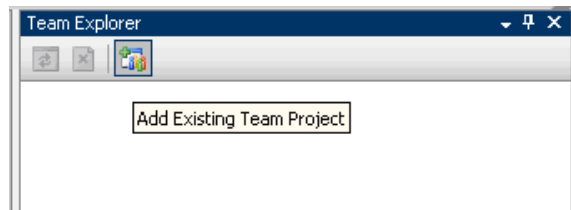
Starting TFS Explorer in Visual Studio

To execute the DOORS TFS Integration do the following:

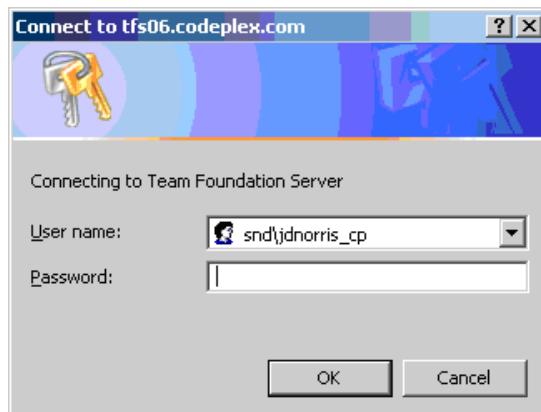
1. Start Visual Studio



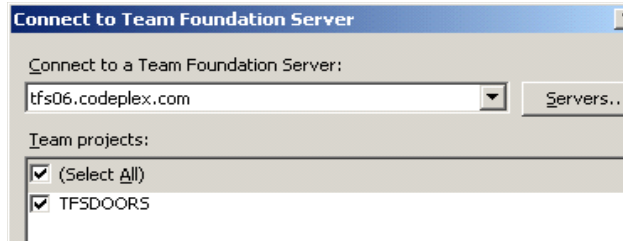
2. Select 'Team Explorer' tab found in the far right corner



3. Select the 'Add Existing Team Project' option at the top of the Team Explorer

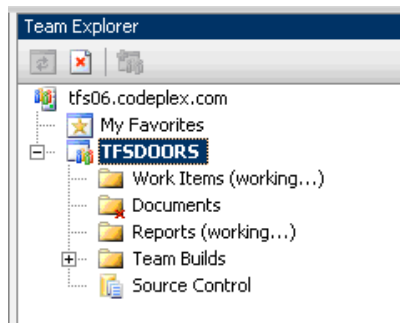


4. Login to TFS Server

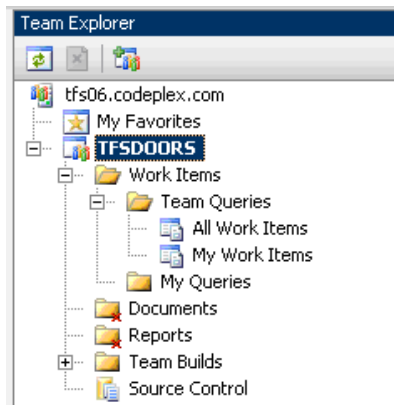


5. Select the Project you wish to open

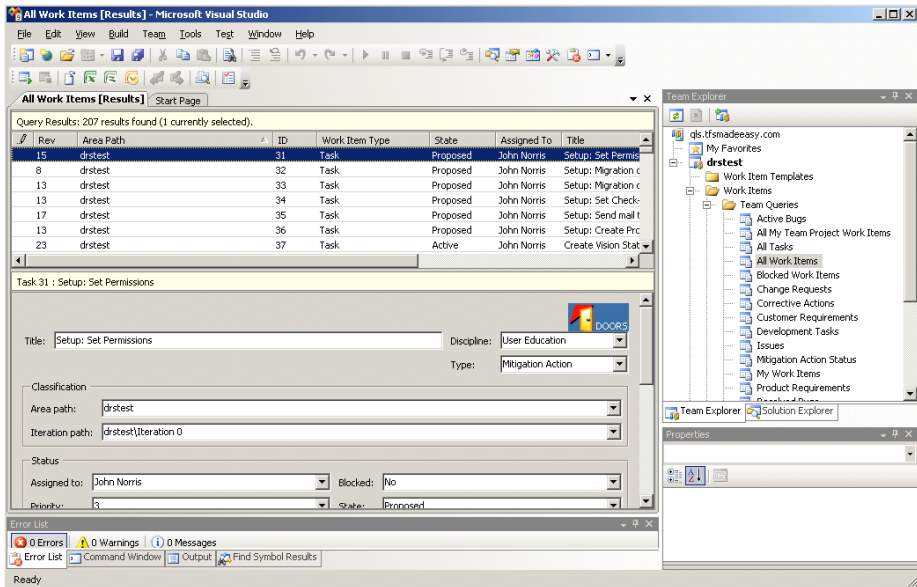
6. Expand the Project Tree (TFSDOORS in our example case) and wait until 'Work Items' are loaded



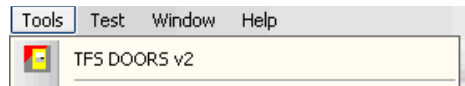
7. Expand Work Items folder, then expand 'Team Queries folder



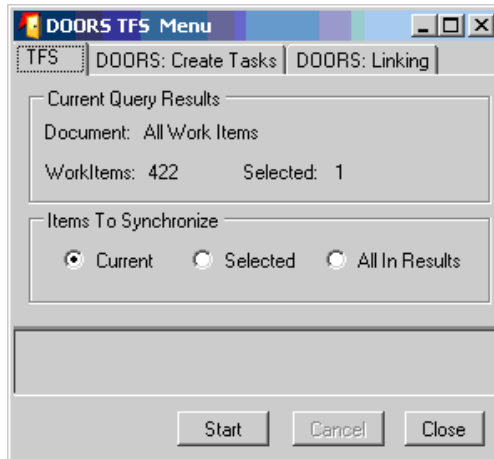
8. Double click 'All work items' or 'My work items' or enter in your own query to retrieve work items from TFS
9. When the query has completed your work items will be displayed in the main window of Visual Studio



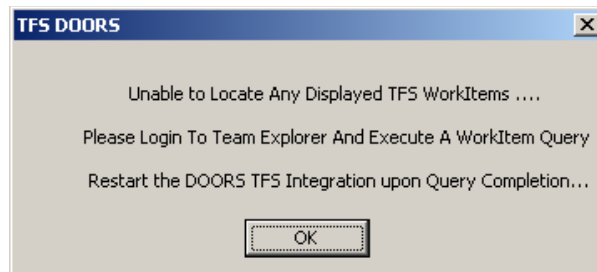
10. Select any workitem in the list and DOORS integration controls will appear within the workitem form.
11. To start the integration Floating Menu goto to the Tools menu and select 'DOORS TFS...' option



12. This will activate the DOORS TFS Floating Menu.



Note If The Integration is executed before Work Items have been displayed the integration will not load and the following message will appear



6

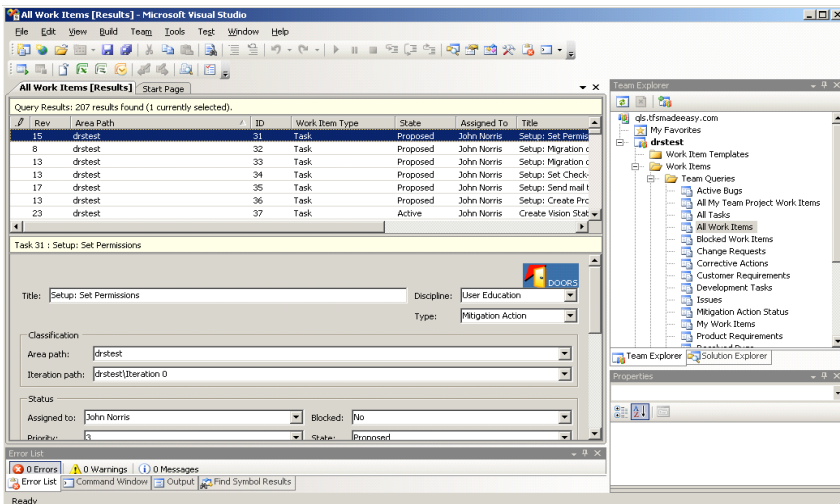
Creating Links:

There are several methods to create a link. You can drag and drop and drop using the DOORS Icon Anchor or DOORS Links Tab paner. You can create multipl links using the Links Tab of the TFS Menu Dialog

Create Links Using DOORS Icon Anchor



Above appears a DOORS icon on the WorkItem Task form as part of the header banner. This icon is used as an anchor point where you can drag and drop to DOORS to make a new link. Just grab the icon and drag over to a DOORS object and drop.



Note Reverse Drag Drop from DOORS is not activated at this time., use the DOORS Links Tab instead.

DOORS Links Tab Panel

| ID | Type | Title | Description | Comments |
|----|--------------------|-----------------------------|----------------------------------|--------------------------|
| 0 | DoorsLinkType | ID: UC1 Module: Novembe... | new use case text 2:51 | vstfs:///WorkItemTrac... |
| 1 | DoorsLinkType | ID: UC5 Module: Novembe... | this is a test for sectio n1 | vstfs:///WorkItemTrac... |
| 2 | DoorsLinkType | ID: UC7 Module: Novembe... | this is an inserted section | vstfs:///WorkItemTrac... |
| 3 | DoorsLinkType | ID: UC11 Module: Novemb... | insert at pos 4 | vstfs:///WorkItemTrac... |
| 4 | Workitem Hyperlink | doors://JOHN3:36679/?ver... | doors://JOHN3:36679/?version=... | vstfs:///WorkItemTrac... |
| 5 | Workitem Hyperlink | doors://JOHN3:36679/?ver... | doors://JOHN3:36679/?version=... | vstfs:///WorkItemTrac... |

A new Custom Tab panel can be added to workitem forms that will display links to DOORS targets. You may create links for the workItem by Drag And Drop using this panel.

1. Select a **Work Item** from the TFS Query Results list and open the DOORS Links Tab.
2. Click the Mouse in the List area and Drag and Drop onto any DOORS object that you have **WRITE/EDIT ACCESS** to. If possible links will be created on both items in both directions.
3. Or Select a DOORS object and Drag and Drop onto the List area. If possible links will be created on both items in both directions.
4. In the links list area a new link will be added to the existing list. The WorkItem is SAVED automatically.

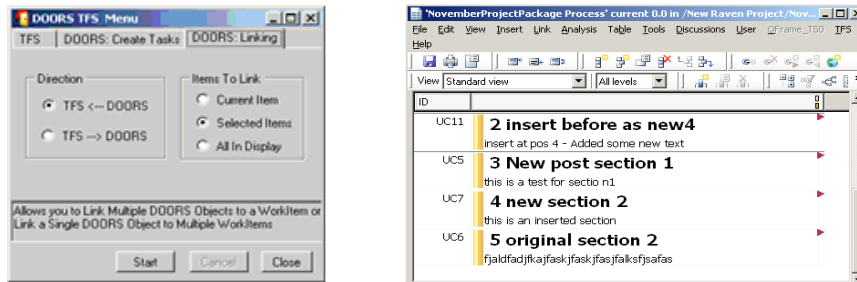
In DOORS an External link is created and any attributes specified in the Configuration Module will be imported into DOORS and assigned to the External Link Attributes (NOT the DOORS Object Attributes). Use the DOORS Link Editor to view the imported values.

| ID | Requirements |
|----------|-----------------------------|
| TFS-UR7 | 3 Requirements |
| TFS-UR8 | 3.1 Capability Requirements |
| TFS-UR9 | 3.1.1 Carrying Capacity |
| TFS-UR10 | 3.1.1.1 Number of people |

Note The DOORS External link is not Navigable back to Visual Studio due to it being a NON Supported feature of Microsoft Work Item URI Navigation in Version 2005 and 2008.

Create Multiple Links

Location: DOORS TFS Menu DOORS:Linking Tab



DOORS: Linking tab option allows you to create multiple links at once between the TFS Results view and the DOORS Display.

Direction

- TFS From DOORS
- TFS To DOORS

Items To Link

- Current Item
- Selected Items
- All In Display

To link 1 or more DOORS objects to a single workItem select the TFS <--- DOORS option in the 'Direction' section. Select the workItem you want to link to in the query results document, in DOORS select the object or objects you want to link from. on the Link Menu Dialog select the appropriate 'Items To Link' option. Select 'Start', a confirm prompt will appear indicating the number of links to be created

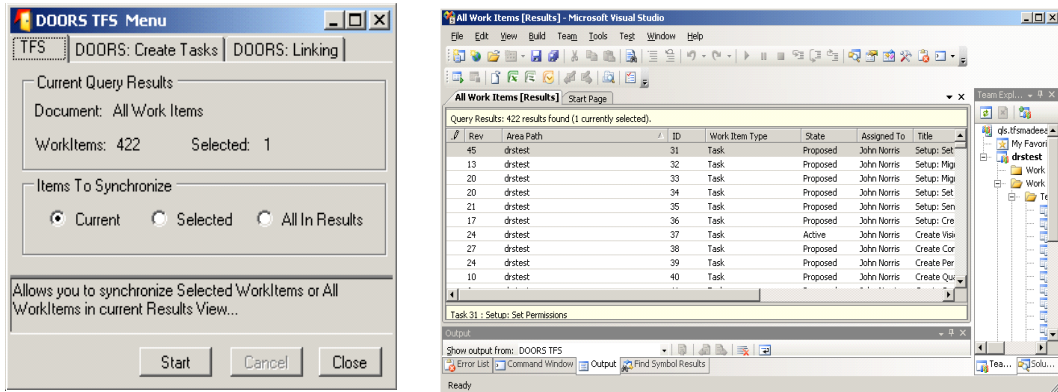
To link 1 or more WorkItems to a single DOORS object select the TFS ---> DOORS option in the 'Direction' section. Select the DOORS object you want to link to in the DOORS module, in Visual Studio select the workItem or workItems you want to link from. On the Link Menu Dialog select the appropriate 'Items To Link' option. Select 'Start', a confirm prompt will appear indicating the number of links to be created.

Note After starting the link operation if you receive a dialog indicating the inability to select or locate a DOORS object. Reselect your DOORS object or objects making sure the DOORS module is the current Active module and try the operation again.

7

Synchronize Work Items

Synchronize: Multiple WorkItems



This menu allows you to synchronize the workItems currently displayed in the Query Results window. You can synchronize the single current workitem, selected or All workitems in a Query. This provides the capability to query for any group of workitems and synchronize only those specific work items

Current Query Results Section

- **Document:** Name of current Query Results Document
- **WorkItems:** Number of WorkItems in Query Results
- **Selected:** Number of WorkItems selected using click or shift click

Items To Synchronize Section

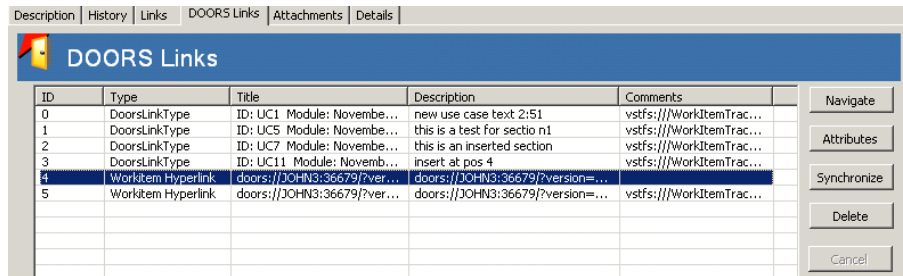
- **Current:** Selected WorkItem
- **Selected:** WorkItems selected using click or shift-click
- **All in Results:** All WorkItems in Query Results

After running the desired query, Set the “Items To Synchronize Section” to indicate which workitems in the current query results document you wish to synchronize. Select the ‘Start’ button, a confirmation prompt should appear indicating how many workitems are about to be synchronized. Selecting ‘OK’ will start the operation and will also open a ‘Report Dialog’ to display messages and warnings for each link being synchronized.

Note A larger number of WorkItems and their links being synchronized can take many minutes to complete which can be due to where the links target

resides in DOORS and also to network and processor throughput speeds. Also for each workitem link their is a corresponding DOORS link which must also be synchronized effectively doubling the amount of links.

Synchronize: Single WorkItem



Selecting the ‘Synchronize’ button will attempt to synchronize all of the links shown in the display. Any errors or warnings will be displayed in a Report Window that opens when synchronize begins.. If you wish to only synchronize one link use the Custom Link Edit Form which can be accessed from the standard ‘Links’ tab through the ‘Edit’ button.

Link type: DoorsLinkType

Link details:

| Attribute | Value |
|----------------------|---|
| URL | doors://JOHN3.36690/?version=2&prodID=0&um= |
| Module | NovemberProjectPackage Process |
| Object Id | UC11 |
| Object Text | insert at pos 4 |
| Short Text | |
| Last Modified By | john |
| Last Modified On | Tuesday, November 04, 2008 |
| Last Synchronized On | |

Imported: Current Value Real Time Report View

| Attribute | Value |
|-------------------------------|---|
| Object Heading | insert before as new4 |
| URL | doors://JOHN3.36690/?version=2&prodID=0&um= |
| Module Name | NovemberProjectPackage Process |
| Object Identifier | UC11 |
| Object Heading and Object ... | 2 insert before as new4insert at pos 4 |
| Created On | Tuesday, November 04, 2008 |
| Last Modified On | Tuesday, November 04, 2008 |

Link type: DoorsLinkType

Link details:

| Attribute | Value |
|----------------------|---|
| URL | doors://JOHN3.36690/?version=2&prodID=0&um= |
| Module | NovemberProjectPackage Process |
| Object Id | UC11 |
| Object Text | insert at pos 4 |
| Short Text | |
| Last Modified By | john |
| Last Modified On | Tuesday, November 04, 2008 |
| Last Synchronized On | |

Imported: Current Value Real Time Report View

| Attribute | Value |
|------------------|---|
| Object Heading | insert before as new4 |
| URL | doors://JOHN3.36690/?version=2&prodID=0&um= |
| Module | NovemberProjectPackage Process |
| Object Id | UC11 |
| Object Text | insert at pos 4 - Added some new text |
| Short Text | |
| Last Modified By | john |
| Last Modified On | Monday, January 12, 2009 |
| Comment | insert before as new4 |

Synchronize View Value

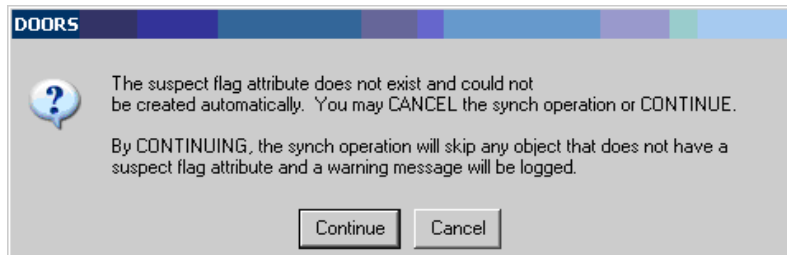


Access the DOORS Link Edit form from the standard workitem 'Links' tab panel. Clicking on the plus (+) button will expand the form and retrieve current data from the doors target object.

When the form expands it compares the stored Link Attribute data to the current DOORS object data – if there is a difference the stored data items will highlight in “Red” as shown above. At this time the “**Synchronize**” button is enabled and if selected then the link data is updated from DOORS..

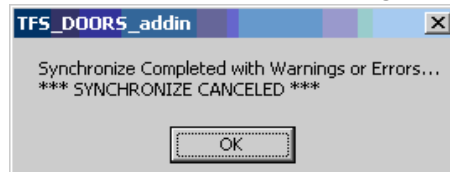
Synchronize Warning And Error Messages

Synchronize: Suspect Link Flag does not exist in DOORS

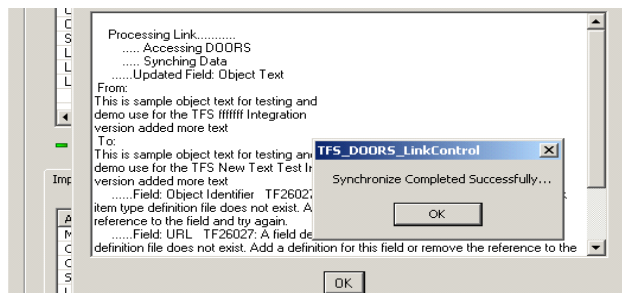


Synchronize: CANCELED

CANCEL can be invoked from either the Menu dialog or from the Report Dialog.



Synchronize: Completed

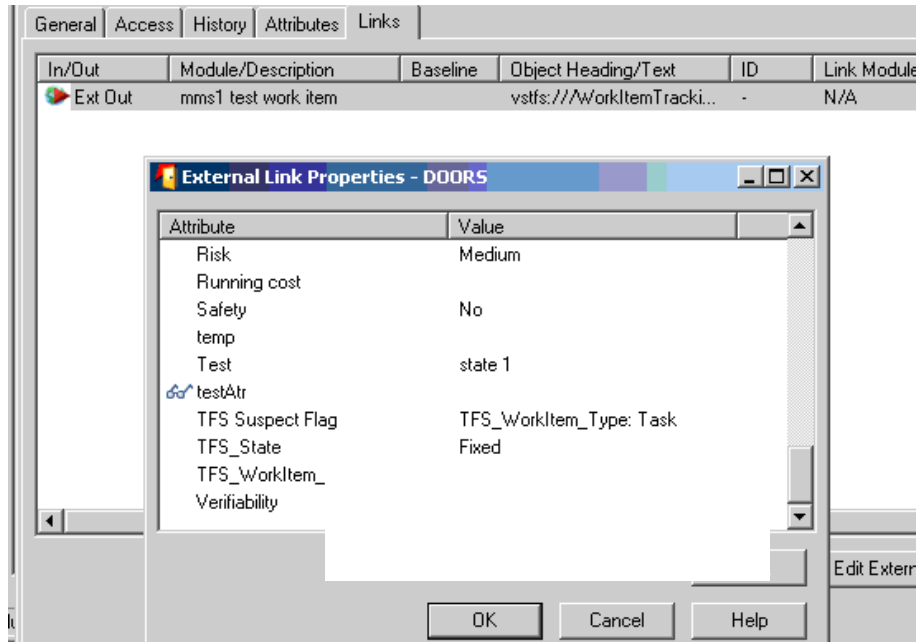


Version 2 displays multi item operation messages using dialog that pops up when you do a synchronize operation or if there were errors on a link drag n drop or delete operation.

The below example shows some of the messages and format when things go wrong. such as doors links using link types other than the DOORS Link Type in this case..

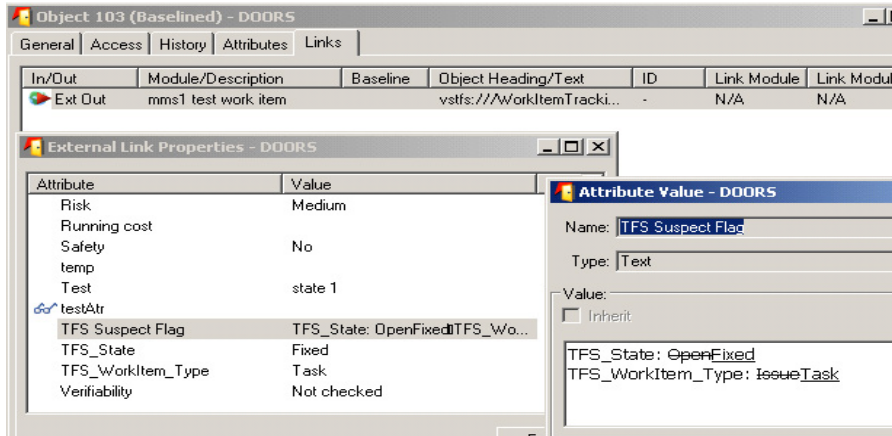
Viewing Synch Results in DOORS

1. Locate the DOORS requirement object and then use the “Edit Links” option to view the External links.. Select the appropriate external link and select the “Details” button. This will open the link attribute edit window.



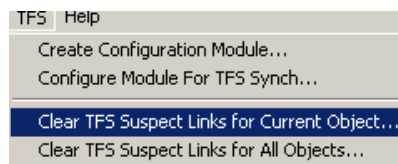
Note Current integration version stores TFS field data values in DOORS as a Text value. You may manually create the DOORS attribute to be any type you prefer to match the same type as on the work item but be aware that during Synchronize operation no type verification is executed and if the data is an invalid format or value, errors or warnings may occur.

2. Scroll down to the “**TFS Suspect Flag**” and select. Double click or select the edit option to open the Attribute dialog. Each imported Attribute will be displayed in a list including a difference Mark up indicating what changed for each value..

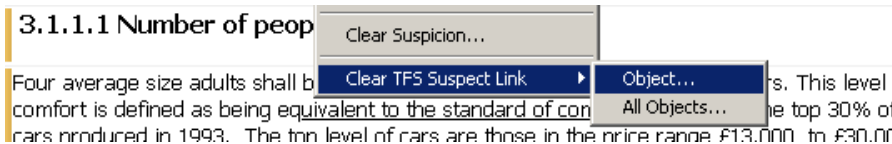


Note To manually CLEAR SUSPECT just set the “TFS Suspect Flag” attribute to “Default” value and save. Users may also use one of the following popup or menu options.

- Execute from DOORS ‘TFS’ Tool Bar Menu.



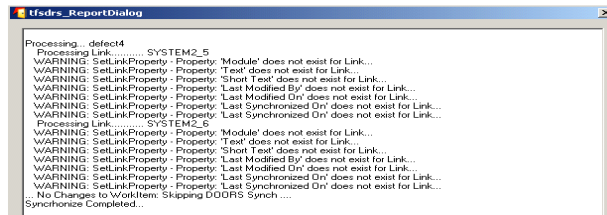
- Execute by selected the object and activate the “Right Mouse” button to show the pop up menus.



8

Message Output Display and Logging

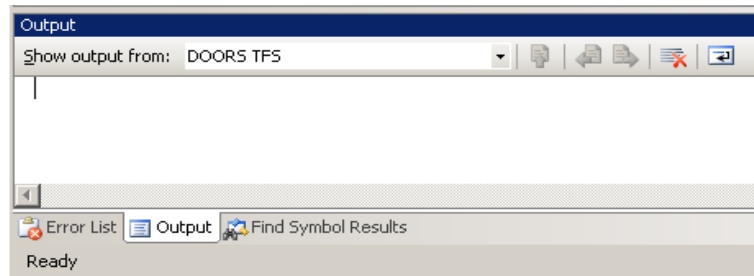
Report Dialog:



Version 2 displays multi item operation messages using a dialog that pops up when you do a synchronize operation or if there were errors on a link drag and drop or delete operation.

The above example shows some of the messages and format when things go wrong.. such as doors links using link types other than the DOORS Link Type in this case.

Visual Studio Output Window:

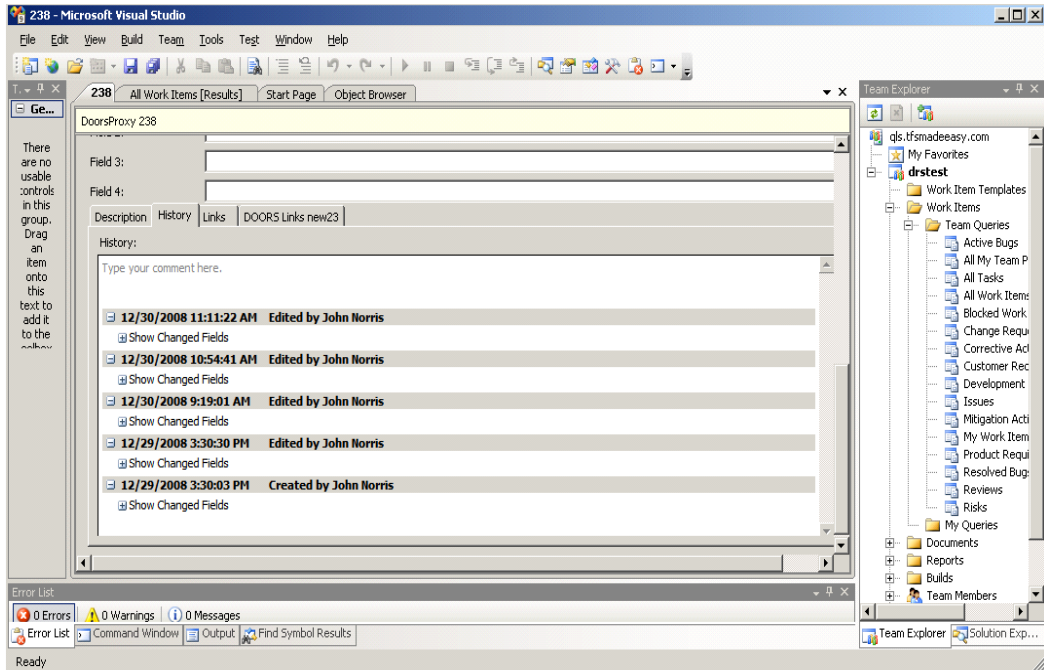


Error and log messages are also displayed on the Visual Studio Output window. To display goto toolbar menu 'Edit->Other Windows->Output'

9

Detecting Suspect Changes

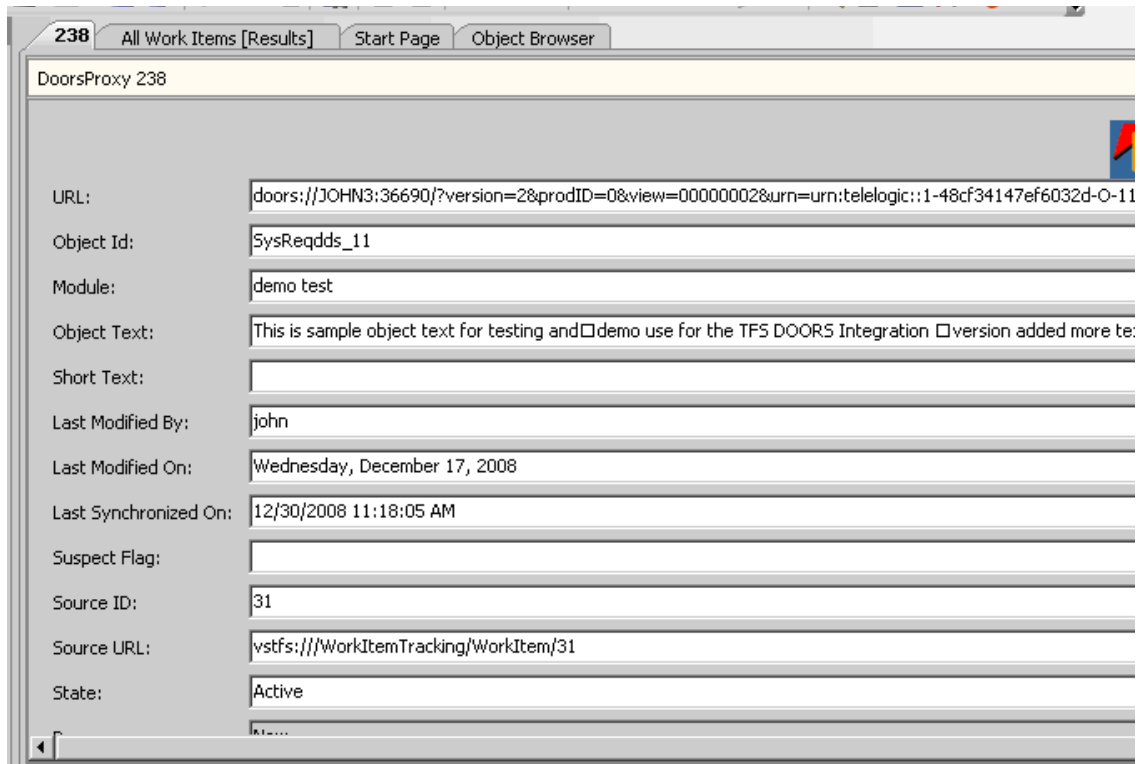
Link Attribute Change History



One of the added benefits of the DoorsProxy item is that an automatic change History is kept by the TFS system

After each synchronize operation, DOORS data that is stored in TFS could have changed. Since the data is stored using a variant of the TFS workItem type it is possible to

create query reports that show what data has changed and which Workitems are impacted.



Each DoorsProxy item contains the 'SourceId' and 'SourceUrl' of the workItem they are associated with. Using these fields a query can be constructed to SELECT all Items of type DoorsProxy WHERE "Last Modified On" >= someDate; the results of this query can be combined with another query to SELECT all items of type "Task" WHERE ID= DoorsProxy.SourceId

More complex reports can be created to show which attributes changed and how.

