



VisualAge for Java, Version 3.5

Highlights

Leverage existing applications to gain a competitive advantage

Transform the power of Java technology into e-business connectivity

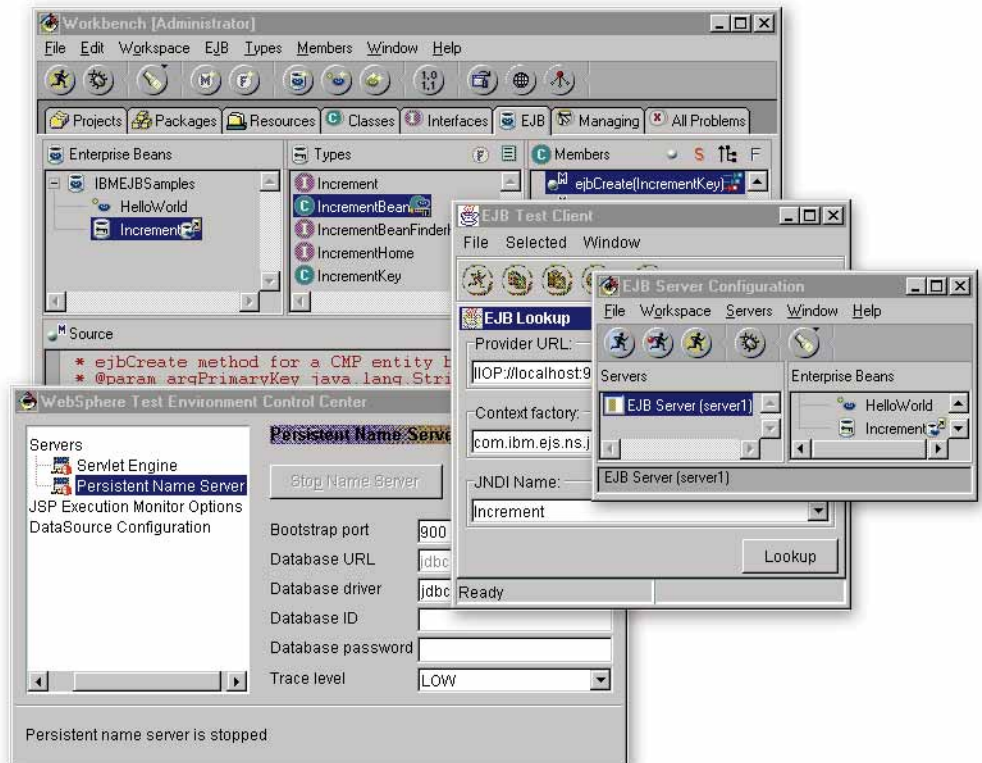
Build with tools that manage the development of large-scale applications

Run with advanced tooling for the WebSphere software platform

Over the course of its four-year history, IBM VisualAge® for Java™ has become a standard for Java developers creating e-business applications. VisualAge for Java, Version 3.5 turns the power of Java technology into a competitive advantage by leveraging existing applications and transforming key business processes to build effective e-business solutions.

Leverage existing applications

The fastest way to e-business is to reuse something that is running your business today. VisualAge for Java allows developers to quickly and easily leverage existing applications to e-business. Using the Enterprise Access Builders (EABs) in Visual Age for Java, developers are isolated from low-level communication APIs and data type conversions.



The WebSphere test environment speeds development, testing and deployment of servlets and EJBs.

They can quickly create beans and Enterprise JavaBeans™ (EJBs) that extend IBM CICS® Transaction Servers, Encina®, IBM MQSeries®, IBM IMS™, IBM Host On-Demand, Java components, Common Object Request Broker Architecture (CORBA), C++ and SAP Release 3 applications to e-business. By providing a consistent architecture (Common Connector Framework) and set of tools that allow developers to take advantage of existing Lotus Notes™, VisualAge for Java forms the basis of enterprise connectivity for e-business and facilitates a client-to-services computing model that keeps deployment options open.

Transform your business to e-business

Connecting any client to any information on any server is key to keeping your customers, clients, partners and employees connected to your e-business. Support for the development of server-side Java applications and new Extensible Markup Language (XML) parsing tools make VisualAge for Java a logical choice for maximum client connectivity.

VisualAge for Java contains a new servlet wizard that generates servlets, JavaServer Pages™ (JSPs) and HTML prototypes, so developers can quickly test their business logic inside the IDE before they deploy to a production server. These server-side Java applications can be published to IBM WebSphere™ Studio and enhanced with content created by a Web developer using Studio rich set of Web site editing, managing and publishing tools.

Businesses are under increased pressure to quickly change their business models to respond to customer requests for additional services, products and features. The XML tool kit inside VisualAge for Java forms a bridge between the UML business models held in Rational Rose and the Java implementation held inside VisualAge. The Java code created by the bridge is based on the open, XML standard—enabling tools supporting XML to integrate with VisualAge through the VisualAge for Java Open Tools Integrator API.

Manage the development of large-scale applications

Superior code management—the top level of Java programming—is what sets IBM VisualAge for Java apart from the competition. Now, developers can store other Web development assets (files) inside the VisualAge for Java source control system. The Source Control Management (SCM) bridge

inside VisualAge for Java provides enhanced integration with external SCM systems such as Rational ClearCase, IBM TeamConnection™ and Merant PVCS systems. Developers are now given visual reminders when an IDE is out of synch, and tooling is provided to update the external SCM system with the code contained in VisualAge for Java.

Easy connection to relational data is essential for any application. VisualAge for Java remains an easy way to create Java applets, applications or servlets that connect to a database through JDBC or take advantage of SQLJ and stored procedures.

Run with advanced tooling for the WebSphere software platform

The IBM WebSphere software platform—a comprehensive set of integrated e-business solutions including VisualAge for Java, Version 1.2—is a key part of the Application Framework for e-business, a unified end-to-end architecture developed by IBM and based on a unified programming model. The EJB specification has received industry-wide support as a common programming model and is the integrating component model for the Application Framework for e-business. VisualAge for Java was the first Java IDE to provide wizards that simplified EJB

development by generating the bulk of EJB infrastructure code. Wizards for session and entity beans creation and mapping beans to existing relational data stores, as well as an advanced testing environment, drastically reduce the time it takes to create, test and deploy EJBs.

The VisualAge for Java persistence tooling allows developers to map EJBs to existing relational database schemas. With support for both session and entity beans (CMP), developers can generate EJBs from existing database tables or generate database schemas from existing EJBs. VisualAge for Java can also bridge the gap between database administrators and Java developers by providing the means for mapping object models to data models. Support for IBM DB2® S/390® and Sybase—in addition to IBM DB2® Universal Database™ and Oracle—has also been added to Version 3.5.

By hosting an IBM WebSphereTest Environment (WTE) in VisualAge for Java, developers can also pretest their EJBs and servlets before deploying to a remote server. Because the developer can start and stop the server and the application, and actually change the application on-the-fly inside the VisualAge for Java IDE, the developer saves time by not having to remotely deploy and test the code.

Generation of a test client allows developers to test their server-side EJB without having to code a user interface or wait for the compelling user interface from the graphic artist. In addition, when the user interface is complete, it functions as a testing tool to determine whether problems exist in the client or on the server portion of the application.

VisualAge for Java also simplifies the addition of EJBs to existing applications. By generating AccessBeans, VisualAge hides the remote and home interface of an EJB and adapts it to the JavaBeans programming model. This simplifies the programmatic interface between enterprise beans and servlets or JSPs by providing a simplified JavaBeans interface to the EJB that is recognized by all Java developers. AccessBeans introduce advanced local caching of EJB attributes, reducing the number of remote calls and providing faster access to EJBs.

VisualAge—the tool of choice

For developers new to Java, VisualAge for Java, Version 3.5, provides integrated scenarios that help developers learn how to build solutions by customizing prebuilt applications. These ready-to-deploy applications include comprehensive documentation that allows the developer to rapidly build, test and publish e-business applications to the WebSphere platform. Together with a new, full-file view and edit function, VisualAge for Java becomes an effective e-business training platform.

WebSphere software platform: building on a firm foundation

VisualAge for Java is part of the IBM WebSphere software platform—a comprehensive set of integrated, award-winning e-business solutions. No matter where you are in the e-business cycle, the WebSphere software platform allows you to grow—at the speed the market demands. Building on this robust platform, you can connect diverse IT environments to maximize your current investments and leverage existing skills. Deliver your core business applications to the Web using industry standards like Java technology and XML. And create next-generation applications that differentiate you from the competition. Advance to a powerful platform for integrated e-business—the WebSphere software platform.

For more information

To learn more about IBM VisualAge for Java, visit:

ibm.com/software/ad/vajava

To learn more about how IBM WebSphere software platform can help you succeed in e-business, contact your IBM sales representative, IBM Business Partner or visit:

ibm.com/websphere

To order IBM VisualAge for Java, contact your IBM representative or IBM Business Partner, or call 1 800 IBM-CALL. Or visit the Shop IBM Web site:

ibm.com/shop



© International Business Machines Corporation 2000

IBM Corporation
Software Communications
Route 100, Building 1
Somers, NY 10589

Printed in the United States of America
06-00
All Rights Reserved

CICS, DB2, DB2 Universal Database, the e-business logo, Encina, IBM, IMS, MQSeries, S/390, VisualAge and WebSphere are trademarks of International Business Machines Corporation in the United States, other countries or both.

Lotus Notes is a registered trademarks of Lotus Development Corporation in the United States, other countries or both.

Microsoft, Windows and Windows NT are trademarks of Microsoft Corporation in the United States, other countries or both.

Java and all Java-based trademarks and logos are trademarks of Sun Microsystems, Inc. in the United States, other countries or both.

Other company, product and service names may be trademarks or service marks of others.



Printed in the United States on recycled paper containing 10% recovered post-consumer fiber.



GC09-2525-04